



DISTRICT SERVICE REPORT

2016-2017

OaklandSchools



ASSISTANCE • CONSULTATIONS • RESOURCES • PROGRAMS • PROFESSIONAL DEVELOPMENT

Focused on Results

October 2017

Dear Reader,

Oakland Schools accomplished a great deal during the 2016-2017 school year. This District Service Report is our opportunity to conduct an annual review of the services we provide to the 28 school districts, 24 public school academies and the 96 nonpublic schools in Oakland County.

We are always striving to improve, because by continuing to provide efficient, effective and essential services, we are fulfilling our purpose. Our success is your success, and we pride ourselves on assisting districts, educators and administrators in their pursuit of excellence and equity for the students in our county.

We hope that as you view this report, you take stock of how your district is utilizing our resources. Oakland Schools is here, first and foremost, to provide support to you. We hope your district avails itself of these opportunities as often as possible.

If you have any feedback on these results, or any questions about the services Oakland Schools can provide for your district, please contact me at 248.209.2123.

Sincerely,



Dr. Wanda Cook-Robinson
Superintendent, Oakland Schools



Table of Contents

Learning Today, Transforming Tomorrow

What is an Intermediate School District?.....	4
Service Highlights.....	4
How This Data Was Collected.....	4
Our Four Continuous Improvement Plan Goals.....	5
Our Statement of Purpose, Beliefs and Credo.....	5
AdvancED.....	5

Who We Are

Board of Education.....	6
Administration.....	6
Leadership Team.....	6

What We Do for Districts

Oakland Schools Takes Accountability Seriously.....	7
Oakland Schools Finances.....	7
Direct Support to Local Districts.....	8
Districts Save Money With Cooperative Purchasing.....	9

What We Do for Students

Improving Student Achievement.....	10
Cohort Graduation Rates.....	11

Student Services

Career Focused Education (CFE).....	13
Career and Technical Education (OSTC).....	14
Accelerated College Experience (ACE).....	15
Virtual Learning Academy Consortium (VLAC).....	16
Oakland Opportunity Academy (OOA).....	17

Special Populations

Compliance Unit.....	18
Capacity Building Unit.....	19
The Materials Center.....	20
Student Services for Low Incidence.....	21

Community Programs

Homeless Student Services.....	22
Oakland County Wraparound Services.....	23
Immigrants and Refugee Student Services.....	24
Truancy.....	25

Event Management

Professional Development.....	26
-------------------------------	----

Additional Resources

District and School Services.....	28
Districts Save Money with Instructional Services.....	29
Support Services.....	30
Technology Services.....	31
Online Application Glossary.....	32
Online Application Usage.....	33
Time Spent on Technical Assistance.....	34
Regional Education Media Center (REMC).....	35
Human Resources.....	36
Production Printing and Graphics.....	37
Fingerprinting.....	38
Medicaid Services.....	39
Michigan Green Schools.....	40
Cost Recovery Field Services.....	41
What Our Customers Say.....	42



Learning Today, Transforming Tomorrow

What is an Intermediate School District?

Created by the Legislature in 1962, Oakland Schools is one of Michigan's 56 educational service agencies that save money and resources for K-12 districts by:

- providing consolidated support and services
- training teachers in the latest research-based methods
- piloting innovative programs
- coordinating early childhood, special education and vocational services across the regions.

Oakland Schools is an autonomous, tax-supported public school district governed by Michigan General School Laws.

The mission of Michigan's educational service agencies (ISDs, RESAs and RESDs) is to provide visionary leadership and quality services to strengthen teaching and learning for all citizens.

Service Highlights

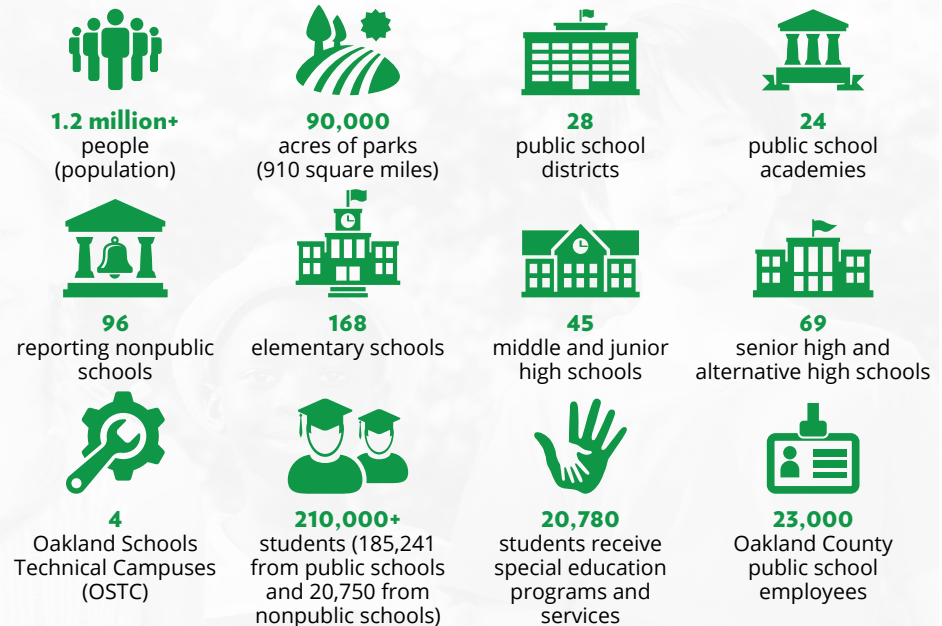
Oakland Schools is committed to improving student achievement through the research-based development and effective delivery and support of innovative, high-quality instructional products and services in partnership with the schools we serve.

Serving the diverse needs of Oakland County schools and more than 210,000 students is our primary focus. We support teaching and learning in the areas of general, special and career-focused education, and provide assistance in business operations and technology. We also support mandated compliance with state and federal regulations with a variety of services.

Everything a district needs, from workshops on the latest teaching methods, on-site consulting and help with school improvement and curriculum, to management software, food service support and testing of students with special needs (and more), is provided by Oakland Schools.

Oakland Schools' commitment to regionalizing services and supporting collaboration across Oakland County enables local schools and districts to operate more efficiently and economically, saving administrative costs/dollars that can be used directly in the classroom.

The Oakland Schools service area encompasses:



How This Data Was Collected

In an effort to focus on results and accountability, Oakland Schools has taken steps to track the services provided to local districts through both quantitative and qualitative measures.

For 2016-17, Oakland Schools collected data in the areas of professional development, assistance and consultation, direct services to students and student achievement.

The data collection tools included online tracking, Excel spreadsheets and project management software. EBMS software is also used by our Event Management team to schedule professional development workshops, register participants and track State Continuing Education Clock Hours (SCECHs).

As we continue to report our services to district customers, we seek to continuously improve our service tracking methods and find meaningful ways to convey our value to our constituents. Please share your feedback with the Department of Communication Services at communications@oakland.k12.mi.us.

Our Four Continuous Improvement Plan Goals

These broad, organizational goals guide the work of Oakland Schools and provide the framework for departmental planning and initiatives.

1. **Equity:** We will allocate and manage our resources to ensure all learners will have opportunity and access to high-quality education.
2. **Well-being:** We will promote, develop and implement practices to support positive social, emotional, mental and physical well-being of all learners.
3. **Excellence:** We will strengthen the professional practice of educators in order for children and students to achieve high levels of academic performance, acquire essential life skills and demonstrate active citizenship.
4. **Operations:** We will develop and maintain efficient business, financial, human resource, instructional and technology systems to support high-quality education.

Our Statement of Purpose

Oakland Schools: *Learning today. Transforming tomorrow.*

Our Beliefs

- It's about service.
- Students form the lens through which our best educational decisions are made.
- All students can and will learn.
- Collaboration builds understanding.
- Education is a shared responsibility.
- Our success depends upon our employees.
- Change is opportunity.
- Lifelong learning is a key to lifelong success.
- Effective relationships are powerful.
- Differences expand our thinking.
- Visionary leadership creates a dynamic environment.
- We must develop leaders for tomorrow.
- Ethical behavior is everyone's responsibility.

Our Credo

Service, expertise and excellence form the foundation of Oakland Schools. We prepare students to be meaningful contributors in a diverse society. Continuous learning drives our efforts to support local districts and the community while fostering a global perspective. Organizational strength and effectiveness come from inclusion, advocacy, innovation and leadership. We share responsibility for leading the Oakland County educational community.

We believe our first responsibility is to the educators of Oakland County, their students and families. We believe that all students can learn, and will, given the right resources and time. Our services, products, tools and knowledge are focused to support high levels of student achievement, maximize resources and meet compliance obligations. Through visionary leadership and inclusive relationships, we develop regional capacity for the continuous improvement of student learning.

We believe every employee can be highly productive. We support ongoing learning by providing necessary tools and resources. We hold one another to a high standard of professionalism, respect, integrity and fairness. Together, we embrace a culture that promotes ideas and innovation as it encourages creativity and fun. We deliver high quality service as we advocate for every child.

We collaborate with the Oakland County community and develop strong partnerships with all levels of government, business, social agencies and education to enhance the quality of life in this region. These collaborations strengthen teaching and learning and increase opportunities for Oakland County students as they graduate to a global economy.

For all those with whom we work and whom we serve, we pledge to partner in practices that honor collaboration, responsible stewardship of public resources, transparent business practices and ethical behavior.

AdvancED



AdvancED[™]

In June 2017, Oakland Schools was granted accreditation from the AdvancED Accreditation Commission, the national commission that confers the

North Central Association Commission on Accreditation and School Improvement (NCA CASI) accreditation seal. The AdvancED ESA Accreditation process provides a national protocol for education service agencies committed to systemic, systematic and sustainable continuous improvement. The process supports, enhances and stimulates growth and improvement throughout the agency. The accreditation process involves three ongoing components: 1) meeting high-quality standards; 2) implementing a continuous process of improvement; and 3) engaging in quality assurance through internal and external review. The agency's accreditation is for a five-year term with regular monitoring of progress and reporting occurring during the term.

Who We Are

Board of Education

Oakland Schools is overseen by the Oakland Schools Board of Education. Our board is elected to six-year staggered terms every other year by the boards of Oakland County's 28 school districts. Candidates are registered electors, and are often local board members.

The board meets twice each month at Oakland Schools unless otherwise noted on the board calendar. These public meetings are posted both on the Oakland Schools website and at the Oakland Schools Educational Service & Professional Development Center, as are property transfer hearings.

Meeting schedules, agendas, minutes and handouts are posted on the Oakland Schools website at www.oakland.k12.mi.us under "About Us," "Board of Education."



Board of Education: Barbara DeMarco, *Trustee*; Connie Williams, *Treasurer*; Marc Katz, *Vice President*; Dr. Theresa Rich, *President* and George Ehlert, *Secretary*.

Administration

Dr. Wanda Cook-Robinson, *Superintendent*.....248.209.2424

Robert Moore,
Deputy Superintendent of Finance and Operations.....248.209.2368

Tammy Evans, *Assistant Superintendent of Shared Services and Chief Information Officer*.....248.209.2187

Dr. Michael Yocum,
Assistant Superintendent of Educational Services.....248.209.2037

Dandridge Floyd, *Assistant Superintendent for Human Resources, Personnel Management and Labor Relations*.....248.209.2429

Leadership Team

Tim Loock, *Executive Director of Auxiliary Services, Maintenance and Facility Operations*.....248.209.2209

Amanda Holdsworth, APR,
Director of Communication Services.....248.209.2181

Dr. Heidi Kattula,
Executive Director of District and School Services.....248.209.2493

Michelle Saunders, *Executive Director of Financial Services*.....248.209.2122

Lisa Hansknecht,
Director of Government Relations and Pupil Services.....248.209.2137

David Randels, *Director of Government Relations, Education Policy and Research*.....248.209.2077

Sherry McMillan, Esq., *Executive Director of Legal Affairs*.....248.209.2062

Karen Olex, *Executive Director of Special Populations*.....248.209.2533

Jarrad Louis Grandy, *Executive Director of Student Services*....248.209.2154

Paul Spoor, *Executive Director of Technology Services*.....248.209.2180

What We Do for Districts

Oakland Schools Takes Accountability Seriously

As an intermediate school district, much of what we do is mandated by federal or state laws with built-in reporting requirements. In addition to these requirements, **Oakland Schools also communicates regularly with referent groups and associations to ensure stakeholders are made aware of the services, resources and assistance provided for the funding we receive.** These include:

- An annual budget meeting with school board designates and superintendents who review the Oakland Schools budget and pass resolutions at the local district level regarding support for the General Fund budget as presented.
- Referent groups such as the Oakland County Superintendents Association, Oakland County School Boards Association, Oakland County School Business Officials, Oakland County Schools Public Relations Association and Oakland County Teaching & Learning Council, among others.
- A countywide Special Education Parent Advisory Council (PAC) that meets regularly to provide input on special education issues and to review the ISD Special Education plan.
- A countywide Education Advisory Group made up of community and business leaders for Career Focused Education.
- A regular update to the Oakland Schools Continuous Improvement Plan (CIP) that includes organizational goals, activities to accomplish those goals and progress measures.
- Independent financial audits of Oakland Schools' revenues and expenditures are reported to the Oakland Schools Board of Education and shared with the local districts we serve.
- Ongoing reporting to the Michigan Department of Education to ensure compliance.
- Annual publication and website posting of our ISD Annual Report and the Budget and Salary/Compensation Transparency Reporting.

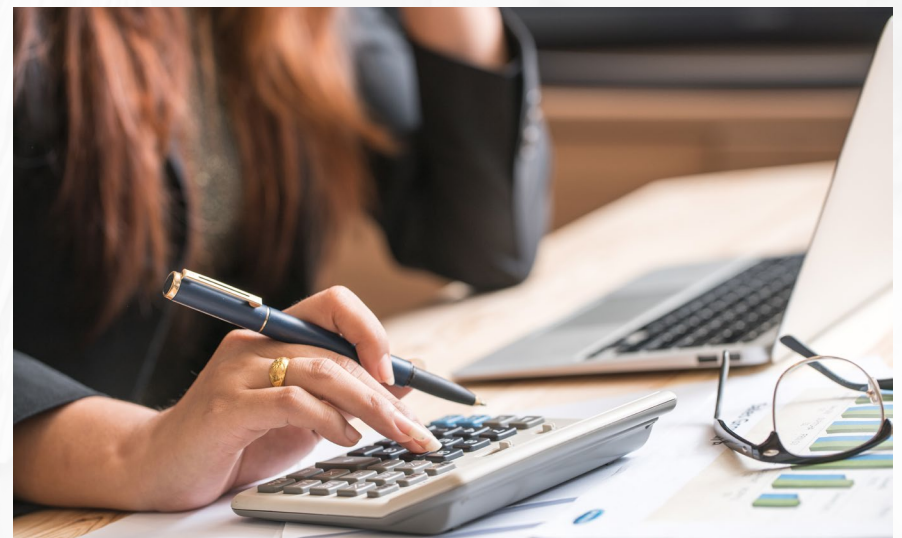


Oakland Schools is a recipient of the **Certificate of Excellence in Financial Reporting** award, given by the Association of School Business Officials for comprehensive financial reporting for fiscal years 1996-2001, 2003-2016.

Oakland Schools Finances

Oakland Schools is financed by Oakland County taxpayers through an annual authorized property tax millage. **The combined millage rate for 2016-2017 was 3.3398 mills.** Oakland Schools operates using three major funds:

- General Education Fund funds instructional and administrative support for districts and obtains its revenue largely from a property tax levy. **Oakland Schools was authorized to collect 0.1985 of a mill on the county tax base for 2016-2017.**
- **Special Education Fund was supported by a tax of 2.5237 mills levied on the county tax base for 2016-2017.** This fund supports Special Education administration, student services and educational consulting services at Oakland Schools and center programs in local districts.
- **Career Focused Education Fund was supported primarily by a levy of 0.6176 on the Oakland County tax base in 2016-2017.** This fund supports vocational technical education administration, the four Oakland Schools Technical Campuses that serve students from all 28 local school districts and the CFE Regional Plan.
- In addition to the three major funds, grants are actively sought to defray costs of regional projects. Oakland Schools serves as the fiscal agent for many such grants that fund ongoing and pilot projects for the benefit of Oakland County students.



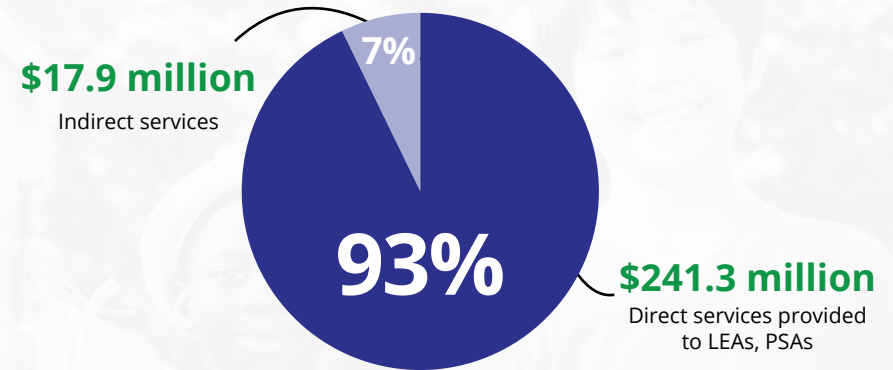
What We Do for Districts

Direct Support to Local Districts

Oakland Schools is committed to putting the vast majority of our dollars directly where the funds can most benefit students: in our schools and classrooms. The dollars that flow through the intermediate school district are carefully monitored to ensure they are spent as mandated, audited regularly and go back to local districts to support the teaching and learning mission. We are pleased that in 2016-17, **93% of our recurring funding went to support programs and services in our county's school districts.**

In the graphic to the right, Indirect Services are defined as the administrative-specific appropriation units in the General Education, Special Education and Career Focused Education Funds, in addition to inter-fund transfers, debt service and capital outlay in specific Capital Projects funds.

Oakland Schools Fiscal Year 2016-17 Total Expenditure Summary



Oakland Schools returned **93 cents of every dollar** to local districts through direct services in 2016-17.

Districts Save Money With Cooperative Purchasing

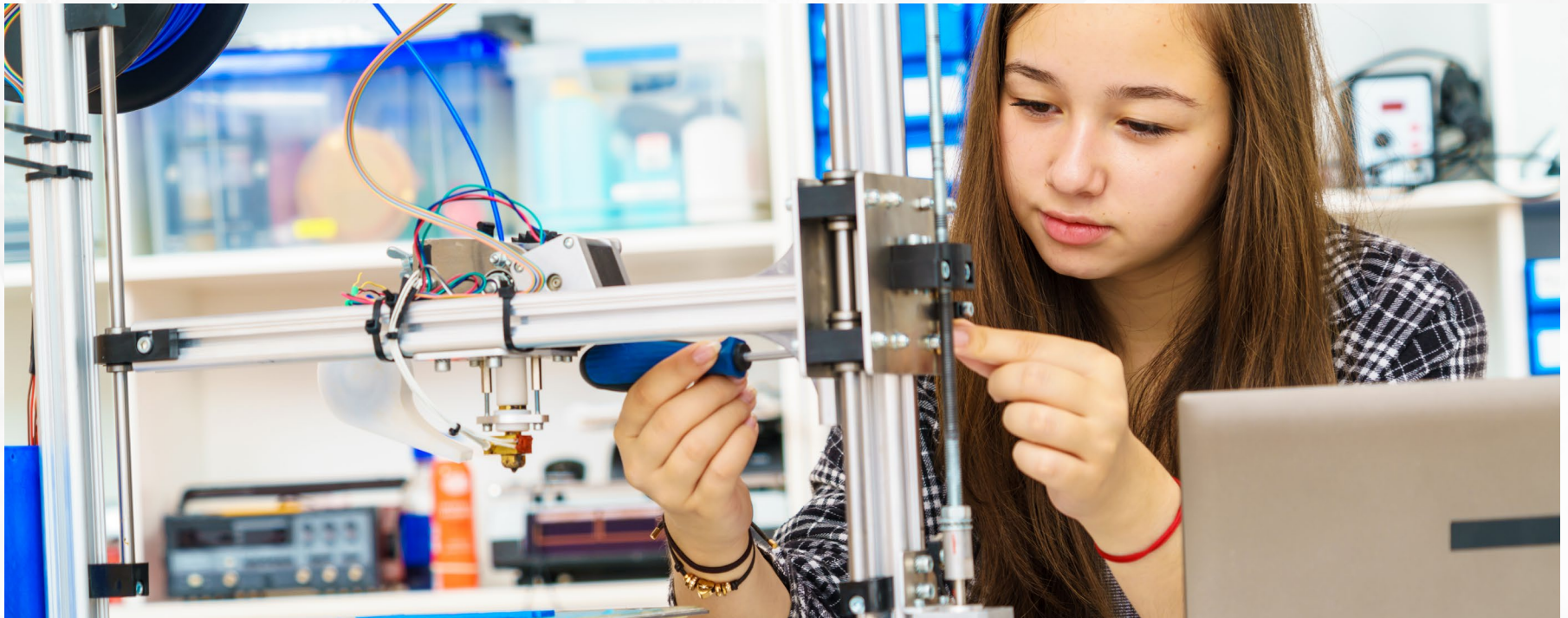
The Oakland Schools Office of Procurement & Contracting:

- Reviews and compiles an online cooperative bid listing for local, regional, state and national bids for districts. Visit the site at www.cooperativecontracts.com.
- Provides an online bidder list for Oakland County districts.
- Assists districts with conducting Invitations for Bids (IFBs) and Requests for Proposals (RFPs) as needed.
- Coordinates and facilitates countywide bid efforts for the Oakland County School Purchasing Officials (OCSPPO).
- Conducts various countywide bids to support local districts such as drug and alcohol testing, student transportation and temporary staffing services.
- Educates the vendor community on how to do business with school districts in Oakland County at vendor outreach events.

Please visit www.oakland.k12.mi.us/ProcurementandContracting for more information on how we can help you maximize your resources with these cost efficiencies.

In 2016-2017, districts participated in the following consortia and cooperative agreements:

- **\$3,006,875** was spent through the OCSPPO cooperative bids for office supplies, furniture, paper, magazine subscriptions, school bus parts, tires and custodial supplies.
- Rebates totaling **\$66,500** were allocated to Oakland County districts participating in the recommended Staples Business Advantage contract through OCSPPO National Joint Powers Alliance (NJPA).
- **\$4,646,378** was spent statewide through the Association of Educational Purchasing Agencies (AEPA) bids and **\$3,706,136** was spent through National Joint Powers Alliance (NJPA) cooperative bids. This generated revenues of **\$92,926** and **\$34,831** respectively, which helped cover administrative costs for the program.
- A beverage consortium including four Oakland County school districts generated revenue and exclusivity payments of more than **\$112,192**.
- Members of the MOR Purchasing Cooperative for food, supplies and USDA foods (in Oakland, Macomb and Wayne Counties) spent **\$20,100,498** in discounted products and services, saving them time and effort.



What We Do for Students

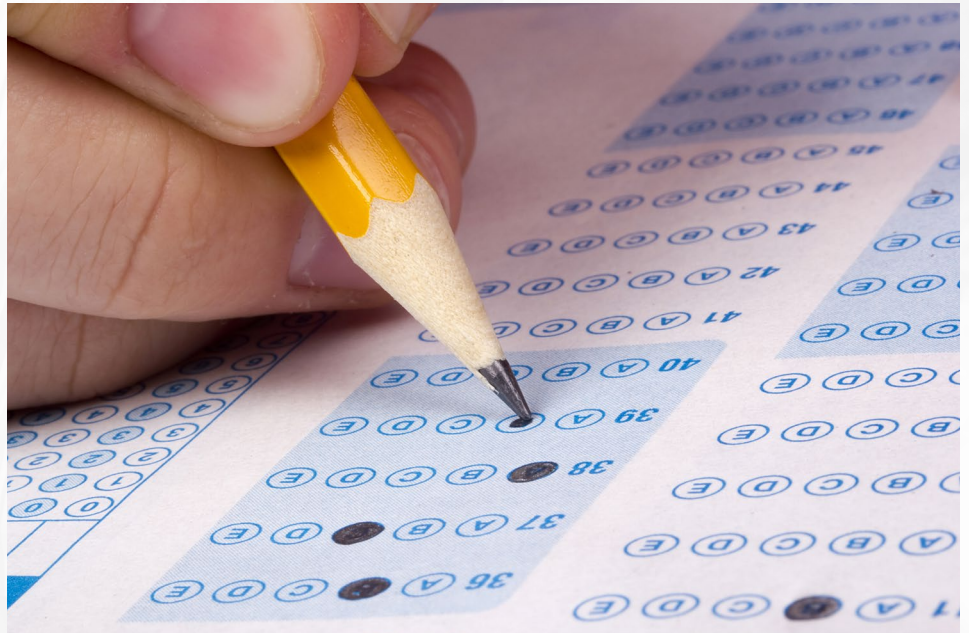
Improving Student Achievement

It is Oakland Schools' role to work behind the scenes, helping those who teach Oakland County's students. Although we do not have direct responsibility for guiding student achievement, we believe there is a correlation between the instructional support we provide and the gains made by students of the teachers we train, coach and support. We are proud to be one of the reasons behind the outstanding achievement of Oakland County students as we compare them to the state averages of standardized tests.

New State Assessments

In June 2014, the Michigan Legislature required the Michigan Department of Education (MDE) to develop a new state assessment for spring 2015. The Michigan Student Test of Educational Process (M-STEP) replaced the 44-year-old MEAP tests. The new assessments include Michigan-developed content as well as content from the multi-state Smarter Balanced Assessment Consortium (SBAC).

M-STEP is a summative assessment and is administered to students in the following grades and subjects: English language arts and mathematics are assessed in grades 3–8; science in grades 4, 7 and 11; and social studies in grades 5, 8 and 11. The Michigan Merit Examination (MME) is the general assessment for students in grade 11. The MME includes: a free SAT with Essay which now serves as both a college entrance exam and the M-STEP English language arts and mathematics assessments; M-STEP science and M-STEP social studies components; and the ACT WorkKeys. The state also gives every student in grade 9 the PSAT 8/9 and grade 10 the PSAT 10.



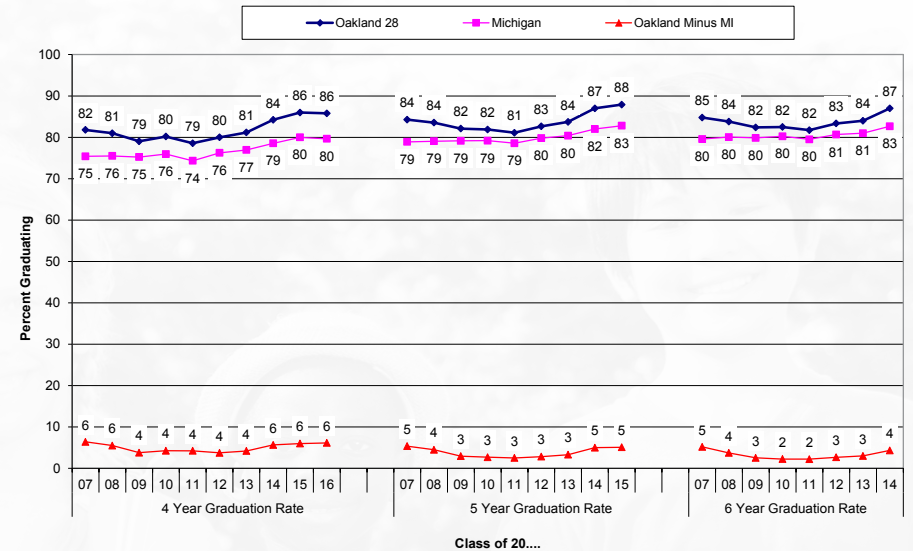
Cohort Graduation Rates

The four-year cohort graduation rate for the class of 2016 was similar to the four-year rate for the class of 2015. The five-year cohort graduation rate for the class of 2015 was slightly higher than the rate for the class of 2014. The six-year cohort graduation rate for the class of 2014 was slightly higher than the six-year rate for the class of 2013.

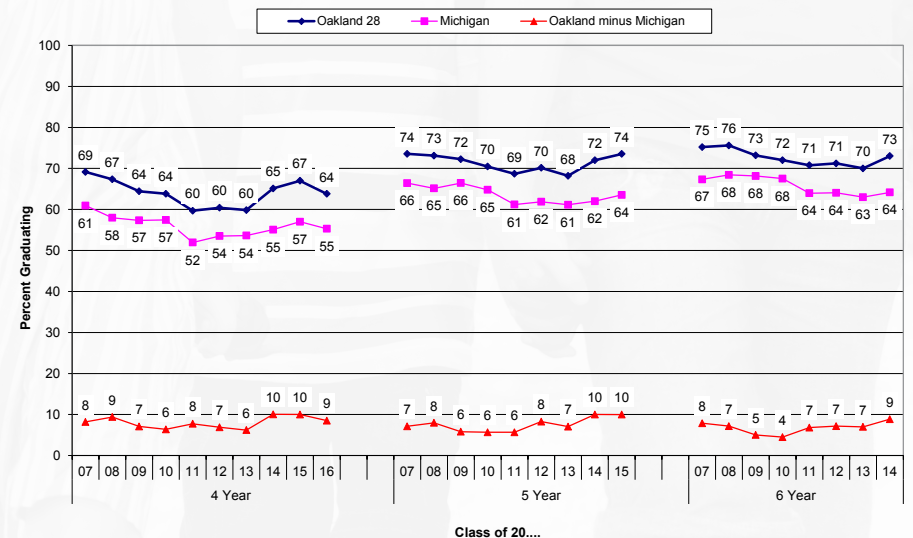
The four-year cohort graduation rate for the class of 2016 was slightly lower than the rate for the class of 2015. The five- and six-year graduation rates for students with Individualized Education Plans for the class of 2015 and 2014 showed increases from prior years.



4, 5 & 6 Year Graduation Rates Classes of 2007-2016



4, 5 & 6 Year Graduation Rates for Students with Individualized Educational Plans, Classes of 2007-2016



Student Services

Providing direct educational services and programs for secondary students across Oakland County

Career Focused Education (CFE)

Oakland Schools operates four AdvancED (NCA)-accredited regional technical campuses where students spend half their school days preparing to meet the demands of post-secondary education and the expectations of employers in 12 career clusters.

In addition to the rigorous and relevant programs offered at the Oakland Schools Technical Campuses (OSTC), CFE offers many other regional initiatives that provide direct support to Oakland County educators, students, families and industry professionals.

Accelerated Learning Experience (ACE)

Oakland ACE is an early college program for students enrolled at participating Oakland County high schools. The program serves students who are either low-income or first-generation college students. A three-year program (grades 11 and 12, plus an additional year), Oakland ACE offers students the opportunity, guidance and support to earn up to an associate degree while still in high school.

Virtual Learning Academy Consortium (VLAC)

VLAC is a high-quality, home-based virtual learning opportunity for students in grades K-9. Our program is a public school option for parents and other caregivers who prefer a flexible, home-based environment, and who are willing to guide their child's learning. Parents, students and staff in the VLAC program work together to keep our students engaged and excited about learning.

Oakland Opportunity Academy (OOA)

Winner of the Crystal Star of Excellence Award from the National Dropout Prevention Council, the Oakland Opportunity Academy offers a unique environment for students to receive their high school diploma while developing the technical, academic and workplace skills essential for postsecondary and career success.

State-Approved CTE Programs Offered Locally by Districts Across Oakland County	State-Approved CTE Programs Offered Regionally by Oakland Schools	Early College Programs Offered Regionally by Oakland Schools	K-12 Programs Offered Regionally by Oakland Schools	STEM Programs Offered Regionally by Oakland Schools
Agriscience Automotive Tech Business Administration Collision Computer Networking Computer Programming Construction Cosmetology Culinary Arts Digital/Multimedia Drafting/Design Education Energy Engineering Tech Family & Consumer Sciences Finance Graphics Health Sciences JROTC Machine Tool Marketing Mechanical Drafting Mechatronics Medium/Heavy Truck Radio & TV Welding	Agriscience Automotive Tech Collision Computer Networking Computer Programming Construction Cosmetology Culinary Arts Digital/Multimedia Energy Graphics Health Sciences Machine Tool Marketing Mechatronics Medium/Heavy Truck Welding Tuition: No cost per student District retains student FTE funding	ACE: Accelerated College Experience for First Generation and Economically Disadvantaged Students OTEC: Oakland Technical Early College Collision Computer Networking Computer Programming Digital/Multimedia Graphics Health Sciences Machine Tool Mechatronics Welding Tuition (ACE): 11th Grade - \$3,900 per student 12th Grade - \$4,900 per student *13th Grade - \$5,900 per student *District receives bonus FTE while student attends OCC full-time Tuition (OTEC): 11th Grade - \$550 per student 12th Grade - \$550 per student *13th Grade - \$5,900 per student *District receives bonus FTE while student attends OCC full-time	VLAC (Virtual Learning Academy): Grades K-8 Grade 9 (starting 2017-18) OOA (Oakland Opportunity Academy): Grades 9-12 Clarenceville Farmington Huron Valley Novi South Lyon Walled Lake West Bloomfield Tuition (VLAC): \$6,300 per student Tuition (OOA): \$6,900 per student	Beaumont Saturday Series CSI: Oakland Family Engineering Night Family Tech Night Middle School Robotics (OCCRA) Middle School Robotics (VEX) High School Robotics (OCCRA) Middle School STEM Summer Camp Science and Engineering Summer Camp Tuition: Cost varies by program

Career Focused Education (CFE)

Benefit to Districts

- **88,244 students** in Oakland County used the Career Cruising system provided by Oakland Schools to expand their career and college readiness.
- **1,217** Oakland County students at our technical campuses became eligible for articulated credits at our partnering post-secondary institutions.
- **700 students from 32 county high schools** competed in the 17th season of OCCRA (Oakland County Competitive Robotics Association). More than 90% of students and coaches surveyed rated their overall OCCRA experience as good or excellent and would recommend it to other students.
- **658 middle school students** were introduced to the world of Science, Technology, Engineering and Math (STEM) in the initial offering of the Middle School STEM Summer Camp.
- **370 students** participated in Manufacturing Day, a celebration of modern manufacturing meant to inspire the next generation of manufacturers.
- **40 students** were acknowledged for outstanding technical achievement at the CTE Student Recognition ceremony.
- **294 students from Oakland County districts** attended The Beaumont Saturday Series for Emerging Technologies in Health Care hosted by Beaumont Hospitals.
- **650 Oakland County students** participated in four STEM, Engineering and Math) initiatives, including Family Engineering Nights, middle-school VEX Robotics competitions, Family Technology Nights, Summer STEM Camps and the CSI: Oakland Forensics Science League.



A variety of career focused education efforts **saved districts \$26,797,966.**

Saving Districts Money

- Students attend a technical campus for a half day at no charge to their local districts. By sending their students to the Oakland Schools Technical Campuses, districts saved **\$21,728,304** during the 2016-2017 school year.
- Oakland Schools distributed **\$2,460,000** from the countywide vocational millage to the 28 local school districts to support personnel and other costs of delivering CTE programs and career development activities.
- Reimbursed districts **\$1,900,000** in 2016-2017, covering 85% of the cost for transporting students to the Oakland Schools Technical Campuses.
- Offered professional development and student enrichment opportunities for the 28 districts, providing a value of **\$393,961**.
- CTE Assessment Tests were given to 21 districts (32 high schools), providing the districts with a value of **\$73,058**.
- Career Cruising, an online career and college readiness management system, was purchased regionally for 27 districts and eight public school academies, providing a value of **\$220,140**.
- CDX Automotive software was distributed to nine high schools in seven districts, providing a value of **\$22,502**.



Career and Technical Education

Oakland Schools Technical Campuses (OSTC)

Oakland Schools Technical Campus Enrollment		
District	Sem. 1	Sem. 2
Avondale	63	54
Berkley	99	91
Birmingham	27	24
Bloomfield Hills	26	25
Brandon	125	117
Clarenceville	30	26
Clarkston	189	177
Clawson	91	86
Farmington	57	55
Ferndale	58	51
Hazel Park	55	48
Holly	103	100
Huron Valley	166	157
Lake Orion	131	113
Lamphere	37	33
Madison	20	18
Novi	51	50
Oak Park	67	60
Oxford	59	55
Pontiac	116	108
Rochester	219	203
Royal Oak	61	54
South Lyon	66	63
Southfield	114	106
Troy	72	66
Walled Lake	200	184
Waterford	209	187
West Bloomfield	42	38
Public School Academies	95	91
Total	2,648	2,440

Providing funding for districts while increasing student achievement



\$513,000

in scholarships for post-secondary study and apprenticeships.



2,603

industry-recognized certifications/licenses earned.



345

paid field experiences and unpaid on-the-job placements.



19

students completed the first year of the Oakland Technical Early College.



17

students participated in state and international labor union-sponsored summer apprenticeship programs.

Academic Credits Recommended	
District	2016-2017
Avondale	76
Berkley	96
Birmingham	19
Bloomfield Hills	23
Brandon	195
Clarenceville	33
Clarkston	283
Clawson	101
Farmington	66
Ferndale	65
Hazel Park	64
Holly	141
Huron Valley	189
Lake Orion	132
Lamphere	28
Madison	16
Novi	58
Oak Park	55
Oxford	71
Pontiac	125
Rochester	260
Royal Oak	67
South Lyon	59
Southfield	120
Troy	73
Walled Lake	226
Waterford	243
West Bloomfield	36
Public School Academies	130
Total	3,050

Accelerated College Experience (ACE)

Benefit to Districts

- ACE is a Michigan Department of Education (MDE)-approved early college program that partners districts with Oakland Community College (OCC) under a single umbrella, saving districts the need to negotiate individual partnership agreements with post-secondary institutions.
- Students enrolled in the three-year ACE program agree to an additional year of high school, but spend their final year entirely at OCC, where they complete their last graduation requirement. The additional funding received by the district in this fifth year of high school helps to defray costs charged to the district during the first two years.
- ACE staff provides essential supports for student success at OCC, relieving districts from having to assign personnel to:
 - Monitor student progress in OCC courses.
 - Provide instruction in the required career and college readiness curricula.
 - Provide individual guidance and counseling related to college coursework, college search, college applications, credit transfers and financial aid.
 - Manage all communications and invoicing from OCC.
 - Facilitate OCC English and math placement testing.
 - Manage student OCC schedules.
 - Purchase and collect student textbooks.
 - Purchase, maintain and collect student Chromebooks.
- ACE protects graduation rates by engaging all students in a minimum of 40 hours of career exploration, internship, job shadowing or clinical experience, ensuring their “on-time” graduation status as required by the MDE for students enrolled in early college programs.
- ACE students take college classes, on a college campus, taught by college instructors alongside college students for transferable college credit. The motivating forces that result from the “power of place” produce levels of student achievement that are points of pride for participating districts.

Student Achievement

- 159 students from 12 districts
- 3.04 GPA in Oakland Community College courses
- 85% of OCC classes passed (C or better)
- 64% of program graduates earned associate degrees (62 college credits)
- 86% earned 50 or more college credits
- 100% earned the Michigan Early/Middle College Association (MEMCA) Certificate
- 100% were “on-time” high school graduates
- 100% have college-enrollment plans for fall 2017, including transfers to: Adrian, California State – Northridge, Central Michigan, Ferris State, Grand Valley State, Lawrence Technological, Michigan State, Northern Michigan, Northwood, Oakland, Saginaw Valley, University of Michigan – Dearborn, University of Michigan – Flint, Wayne State, Western Michigan

Saving Families Money



Estimated cost for tuition, fees and textbooks for an **associate degree at Oakland Community College:**

\$9,156

Total cost to families with students enrolled at Oakland Community College through ACE:

\$0

Virtual Learning Academy Consortium (VLAC)

Virtual Learning Academy Consortium (VLAC) is a full-time Seat Time Waiver (STW) Program allowing districts to have a 100% online opportunity for their students in grades kindergarten to eighth grade. For the 2017-2018 school year, VLAC will expand into high school.

Students work from home with a family-provided Learning Guide under the mentoring of a full-time local Michigan-certified teacher employed by Oakland Schools.

The Oakland Schools mentor teacher monitors progress, conducts weekly check-ins with students and grades all summative assessments.

Benefit to Districts

- VLAC provides a plug and play 100% online Seat Time Waiver program
- Rigorous aligned curriculum
- Local, full-time, Michigan certified mentor teachers
- A low student-to-teacher ratio (40:1)
- A complete technology package (ChromeBook, printers and internet hot spot)
- Technology support through the Oakland Schools Service Desk
- Drop-in academic support at the Oakland Schools Student Center
- Conducts state assessments and WIDA testing
- Provides in-person orientation
- Organizes field trips and student events
- Options for home-based learning with aligned curriculum and mentor teachers
- Options for travel or club student-athletes



Student Achievement

- 245 students enrolled in VLAC from 49 districts across six counties.
- 88% of enrolled students completed their reading course.
- 92% of enrolled students completed their math course.
- 94% of enrolled students who completed their reading and math courses achieved mastery level.

Oakland County District Participation	
District	2016-2017
Avondale	3
Bloomfield Hills	5
Brandon	4
Clarenceville	2
Farmington	26
Ferndale	1
Huron Valley	4
Lake Orion	2
Lamphere	3
Novi	2
Oak Park	5
Pontiac	4
Rochester	26
South Lyon	5
Southfield	2
Troy	4
Walled Lake	8
Waterford	7
West Bloomfield	3
Berkley	1
Birmingham	1
Clawson	1
Royal Oak	1
Total	120



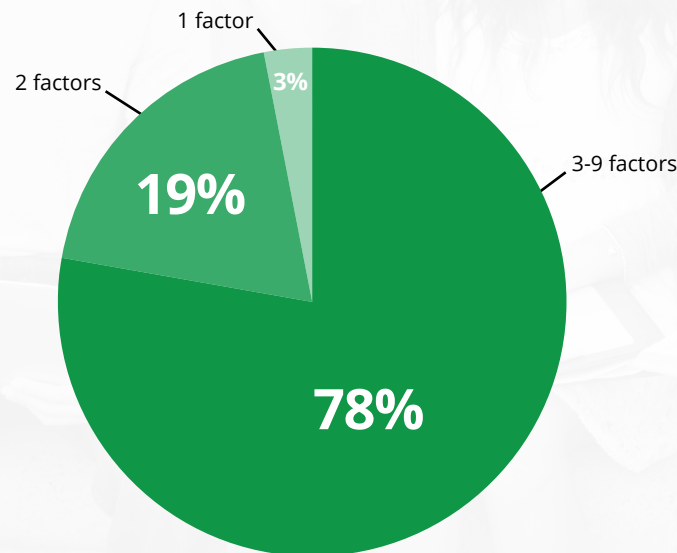
2016-2017 Enrollment			
Grade	Female	Male	Total
K	6	7	13
1	9	13	22
2	3	7	10
3	12	9	21
4	13	15	28
5	19	25	44
6	15	11	26
7	25	19	44
8	5	22	37
Total	117	128	245

Oakland Opportunity Academy (OOA)

Southwest Oakland County's alternative high school, serving Clarenceville, Farmington, Huron Valley, Novi, South Lyon and West Bloomfield.

The Oakland Opportunity Academy (OOA) serves as the alternative high school for public school districts in the southwest quadrant of Oakland County. Located inside the Oakland Schools Technical Campus – Southwest, OOA has been offering credit recovery and career technical education in a smaller, self-paced environment for seven years. During the 2016-17 school year, 188 students passed 1,765 classes at OOA, with 81 students graduating with a high school diploma from their sending schools.

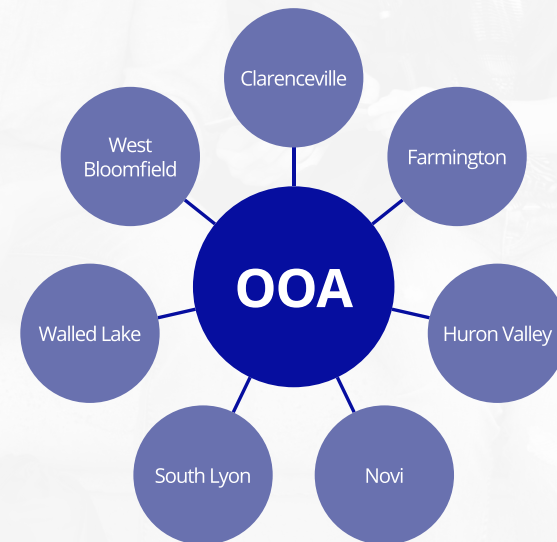
OOA Student Dropout Risk Factors



Students enter OOA behind in credits and not on schedule to graduate on time. OOA's primary goal is to provide an educational setting that gives students an opportunity to finish their high school diploma on time and prepared to move on to post-secondary and career pathways. Approximately 80% of OOA students have three to nine Dropout Risk factors, yet the school has graduated 611 students since 2010, including 81 students in 2016-2017.

OOA Benefits

- Credit recovery for graduation
- Students set their own pace for learning
- Tutor support for all academics
- Project-based learning
- Competency-based education: no failing grades
- Blended learning for core academics
- Individualized learning plan for each student
- Reduced stress and anxiety
- Leadership opportunities
- Positive culture
- Later hours allowing for increased attention and attendance
- Career education during high school



Created in 2010 in response to requests from districts for an alternative education high school, OOA is a shared Educational Entity (SEE) administered by Oakland Schools, allowing each student to remain connected to their sending school. In 2016-2017, 81 OOA students graduated with a high school diploma from their sending schools

Special Populations Compliance

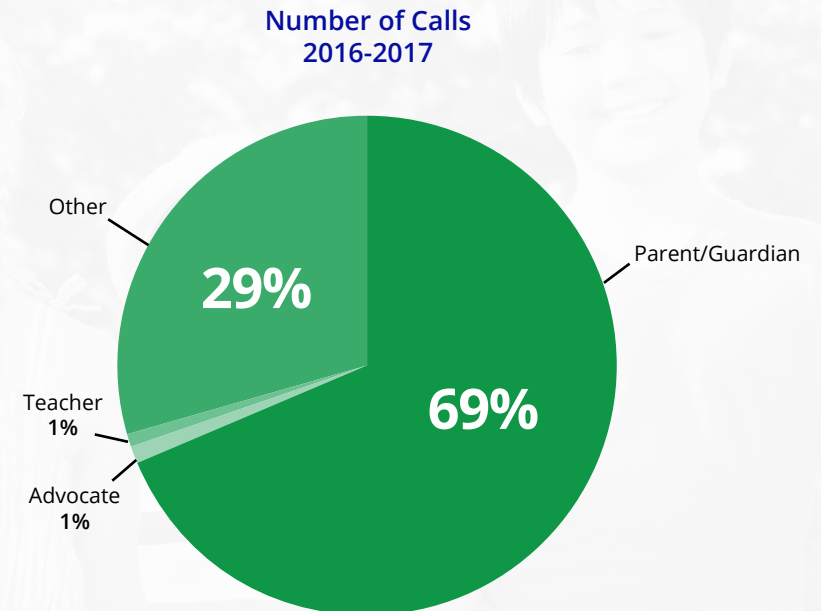
The Special Populations Compliance Unit purpose statement is, **"To provide services that support districts in ensuring compliant practices."**

The Compliance Unit creates a cost benefit for districts through support of programming and services provisions for students with IEPs. Compliance assistance is provided through web-based materials, personal contacts and trainings.

Personnel with extensive knowledge in early childhood and post-school transition lead countywide initiatives and ongoing support to local personnel. Coordination of student placement in county center programs is conducted for all districts within Oakland Schools' boundaries.



One aspect of compliance support is through phone calls from parents, often saving the local district and PSAs complaint investigation dollars.



Facts:

Compliance Coach-to-Coach IEP Professional Learning Series **served 22 local districts and two PSAs totaling 140 direct service staff.**

Compliance provided **30 in-district and/or PSA trainings** on district-requested compliance topics.

Special Populations Capacity Building

The Special Populations (SP) Capacity Building Unit provides support to special education professionals and administrators, designed to help each local district and public school academy (PSA) develop the capacity needed to effectively support students with IEPs and increase student achievement through this combination of professional learning and implementation support.

The SP Capacity Building Unit creates cost benefit to local districts by providing grant-subsidized high-quality, comprehensive professional learning. The approximate daily cost of professional learning in the private sector is \$300*. Oakland Schools local district special education staff pay only for the cost of meals, which are approximately \$15 per day.

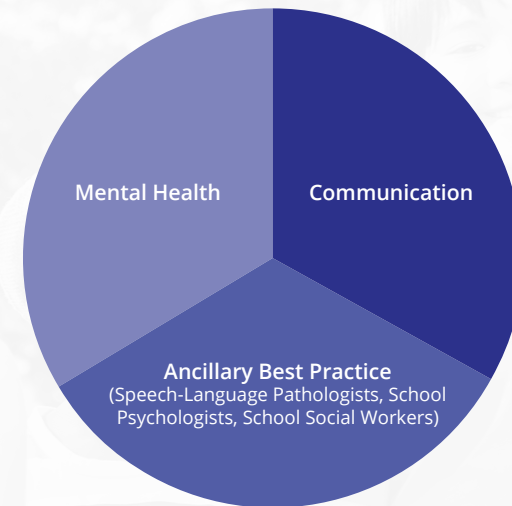
District needs for capacity building are identified annually through a needs assessment survey. The results of these surveys drive the professional learning offered and inform outreach to districts. Oakland Schools maintains countywide listservs based on professional discipline (i.e. school psychologists, speech-language pathologists, school social workers, special education teachers, special education administrators) and uses these lists to communicate and share resources.

In addition to traditional professional learning opportunities, SP Capacity Building consultants add further cost benefit to local districts by supporting critical implementation strategies through lab classrooms and district educator support. This component solidifies the educator's ability to move from "knowing" to "doing."

A formal student problem-solving process is available to assist districts when they are in need of specific strategies to support a student with an IEP. Oakland Schools consultants work with the local team to determine the appropriate makeup of the problem solving team and facilitate the problem-solving process. Emphasis is on assembling district-level teams to increase each districts' capacity to engage in problem-solving on behalf of students; countywide teams can be assembled as well.

**2014 Association for Talent Development*

**Top Three Areas of Professional Learning Attendance
2016-2017**



Top 10 Needs for Professional Learning

Social-Emotional Learning/Social Skills
Oppositional Defiant/Conduct Disorders
Evidenced-Based Strategies
Generalized Anxiety, School Refusal, Obsessive Compulsive Disorder (OCD)
Goal Setting and Progress Monitoring
Attention Deficit Hyperactivity Disorder (ADHD)
Positive Behavior Interventions and Supports (PBIS)
Instructional or Behavioral Problem Solving, Functional Behavior Assessment (FBA)/Behavior Intervention Plan (BIP)
Reading Skill Development: Assessment and Intervention
Mathematics Skill Development: Assessment and Intervention

Special Populations Materials Center

The Materials Center (MC), part of Oakland Schools Department of Special Populations, provides materials and services to the districts and public school academies of Oakland County on behalf of students with low incidence disabilities. The Materials Center researches, locates, evaluates and procures appropriate assistive technology, instructional materials and alternate-format textbooks to meet the needs of students who have an Individualized Educational Program (IEP).

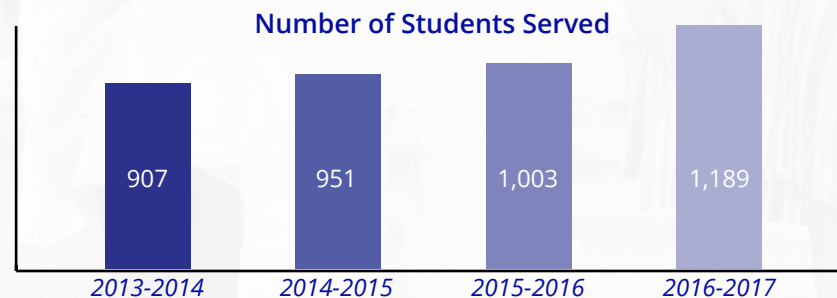
The Materials Center creates cost benefit by utilizing volume purchasing power through the use of existing cooperative bids, and by initiating Invitations for Bids (IFBs) and Requests for Proposals (RFPs). Inventory is managed, tracked and reused allowing for the responsible use of resources across all districts.

In addition to providing materials, the Materials Center offers a comprehensive customer service system to support internal and district staff in the use of the materials provided. Support is offered in the form of set-up, staff training and after-delivery troubleshooting, maintenance, repair and technical assistance.

During the 2016-2017 school year, the Materials Center:

- Provided materials to each of the Oakland County's 28 public school districts.
- Provided 256 items to eight public school academies representing 14 students at a value of \$63,272.
- Processed 1,700 individual requests for student materials constituting 4,500 items.
- Managed 9,300 items checked out to 1,200 students.
- Responded to over 2,000 requests for support.

Based on an analysis of four years of benefit statement data for the 28 public districts (PSAs were excluded), the Materials Center is experiencing a steady upswing in the number of students served.



Number of Students Served and Value of Materials by District						
District	2014-2015		2015-2016		2016-2017	
	Students Served	Value of Materials	Students Served	Value of Materials	Students Served	Value of Materials
Avondale	9	\$22,680	9	\$15,849	11	\$14,117
Berkley	20	71,500	29	121,894	27	114,707
Birmingham	41	61,645	42	121,894	55	72,756
Bloomfield	106	270,290	99	300,009	102	228,017
Brandon	14	80,303	13	43,073	10	46,010
Clarenceville	5	11,987	6	12,183	9	8,104
Clarkston	42	71,094	47	84,302	54	97,094
Clawson	27	46,939	23	23,888	19	21,180
Farmington	71	161,098	52	186,194	65	161,138
Ferndale	15	26,749	14	29,637	9	17,094
Hazel Park	16	72,346	26	80,412	30	68,405
Holly	9	81,574	12	94,719	15	85,555
Huron Valley	34	63,656	41	72,706	58	82,009
Lake Orion	35	125,460	38	117,726	42	103,677
Lamphere	29	97,897	38	136,973	43	115,732
Madison	5	3,792	3	3,024	4	2,727
Novi	17	20,631	12	44,623	16	31,449
Oak Park	10	39,124	10	32,257	12	27,376
Oxford	28	38,119	28	105,798	39	90,448
Pontiac	28	43,108	29	53,979	37	46,126
Rochester	86	196,934	98	229,260	110	212,194
Royal Oak	24	121,134	25	151,629	39	167,959
South Lyon	21	101,022	25	129,940	31	157,053
Southfield	21	58,118	25	38,678	49	72,412
Troy	54	159,617	55	124,685	79	118,743
Walled Lake	58	184,153	72	172,238	75	197,385
Waterford	93	200,846	97	267,386	105	221,290
West Bloomfield	33	105,414	35	103,409	44	61,760
Total	951	\$2,537,230	1,003	\$2,898,365	1,189	\$2,642,517

Special Populations

Student Services for Low Incidence

The Special Populations Student Services for Low Incidence (SSLI) Unit purpose statement is: **"To provide quality instruction, consultation and success to support achievement for students with low-incidence disabilities."**

The SSLI Unit creates a cost benefit for districts which includes support of programming and service provisions for students with low incidence disabilities. This is inclusive of teacher consultants working in the local districts and public school academies to provide direct support to students, procurement and training in the use of assistive technology devices, augmentation and alternative communication technology selection, the provision of alternate-text materials/technology and consultative services to parents, staff and students.



Teacher consultant services to students with IEPs within the Oakland Schools boundaries realized a savings to districts of **\$3,252,525**.

Facts:

Extended school year provided when required for students to make educational progress.

2,230 Digital Support Resources (DSRs) processed for 28 public school districts and 10 public school academies.

28 public districts and four public school academies served.

88% of tax-levied Special Education funds are directly distributed to Local Education Agencies (LEAs), thus providing districts with **\$117,649,800** to offset Special Education costs.

District	Number of Students Served by a(n)...			
	Deaf and Hard of Hearing (DHH) Teacher Consultant	Visually Impaired (VI) Teacher Consultant	Orientation and Mobility (O&M) Specialist	Traumatic Brain Injury (TBI) Teacher Consultant
Avondale	3	2	1	0
Berkley	2	11	0	0
Birmingham	10	9	3	2
Bloomfield Hills	9	26	5	1
Brandon	2	5	2	2
Clarenceville	2	0	0	0
Clarkston	11	8	3	1
Clawson	3	3	0	1
Farmington	2	17	4	1
Ferndale	3	3	1	1
Hazel Park	3	6	2	0
Holly	1	9	6	0
Huron Valley	13	11	2	1
Lake Orion	8	9	6	0
Lamphere	6	7	3	2
Madison	2	0	0	0
Novi	2	3	1	0
Oak Park	3	3	1	0
Oxford	5	3	1	2
Pontiac	4	9	2	1
Rochester	14	24	4	1
Royal Oak	4	6	3	1
Southfield	6	9	2	3
South Lyon	4	9	4	0
Troy	10	14	3	0
Walled Lake	19	18	2	2
Waterford	7	16	6	2
West Bloomfield	8	6	3	1
Bradford Academy	1	2	1	0
Grand River Academy	0	0	0	1
Holly Academy	1	0	0	0
Oakside Scholars	3	0	0	0
Total	171	248	71	26

Community Programs

Homeless Student Services

Oakland Schools Homeless Student Services (OSHSS) has been providing services to homeless students in Oakland County for more than 16 years.

During this time, the need for support and services for homeless students has continued to increase. An ever increasing number of Oakland County students are living in poverty and lack fixed, regular or adequate housing, and are in need of service coordination to ensure their attendance at school remains uninterrupted and they maintain a path toward graduation.

OSHSS leads the county's consortium, comprised of all 28 local districts and public school academies within the county. Oakland Schools provides students with supportive services and connections to community resources, professional development, technical assistance and guidance and dispute resolution and mediation services to districts as well as a centralized data system to link all student data. OSHSS also provides support for individual students through assisting with school supplies, school-related clothing, transportation coordination, emergency shelter and by securing community resources.



2,168

homeless students were identified, enrolled or maintained through the program, preventing a possible revenue loss of **\$13,051,360**.



1,481

homeless students received school supplies from the program, saving districts **\$40,350**.



876

homeless students received school uniforms and necessary clothing reflecting district savings of **\$31,050**.



87

homeless students received \$8,000 in transportation assistance.

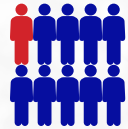


\$13,130,760 total district savings

	Homeless Student Education Program Students Served		
District	2014-2015	2015-2016	2016-2017
Avondale	35	40	23
Berkley	12	22	20
Birmingham	32	44	20
Bloomfield	23	17	15
Brandon	98	138	138
Clarenceville	29	41	35
Clarkston	16	16	21
Clawson	26	18	30
Farmington	191	135	116
Ferndale	17	28	23
Hazel Park	60	42	45
Holly	80	61	61
Huron Valley	108	164	165
Lake Orion	83	114	100
Lamphere	28	35	35
Madison	12	18	8
Novi	18	15	15
Oak Park	73	161	155
Oxford	17	16	26
Pontiac	275	356	200
Rochester	30	36	35
Royal Oak	50	18	38
South Lyon	87	113	110
Southfield	212	249	249
Troy	19	17	14
Walled Lake	78	42	45
Waterford	109	97	80
West Bloomfield	36	46	47
Total	1,854	2,099	1,869

Community Programs

Oakland County Wraparound Services



One in 10 students has serious mental health problems severe enough to impair how they function in school, home or the community.

3x

The rates of suspension and expulsion for elementary students with severe mental health problems are **three times higher** than their peers.

44%

High school students with mental health problems have a **dropout rate of 44% nationally**. Those who stay in school are twice as likely as their peers to receive all Ds and Es.

Wraparound is a team-based service that combines students, community and family members with school staff members to work together to improve outcomes and in keep high risk students in school and in class. In a shared-decision model to achieve common goals and increase the likelihood of school stability, a highly individualized plan is developed to ensure each student can experience academic and social success in their school, home and their community. This plan is created using intensive community supports coordination in a well-established, nationally-recognized model.

Wraparound is a strengths-based planning process to support high-risk students and to help districts avoid costly and disruptive out-of-school placements. Wraparound serves students who are at risk of costly school removal or failure due to severe psychiatric or emotional difficulties. These students are connected with core providers of mental health services in the community to help address extreme behavioral problems they are experiencing along with a combination of other risk factors confronted by the family. Wraparound staff oversees the coordination of services to identified students.

A diverse support system is made up of district staff and community service providers such as mental health, juvenile justice, protective services and substance abuse treatment facilities to come together and develop a plan of success. These partners have continued their commitment to keep students functioning well in school for over 23 years. Due to the highly complex needs presented by these students, interventions that are the most successful extend beyond the boundaries of the school building, utilizing natural and community supports whenever possible to assure stability and academic success.



Wraparound was successful in keeping **90% of referred students** in school during the 2017 academic year.

This represents a potential of **\$1,045,971** in retained revenue for the local districts.

Community Programs

Immigrants and Refugee Services

Many school districts in Oakland County have welcomed an extraordinarily high number of refugee and immigrant families with school age children into their communities in the past several years. While the demand for basic needs is also extremely urgent, the first concern is the level of trauma these children have witnessed, and the crippling effects of this devastation on their ability to attend and succeed in school.

Oakland Schools offers assistance in helping transition this student population by providing systemic consultation and coordination to the refugee community of students new to Oakland County. The goal is to increase school attendance and achievement while implementing an information-and trauma-based service model to maximize student attendance, engagement and achievement.

Community partners such as Oakland Community Health Network, the County Health Department, the Furniture Bank of Oakland County, Trauma Recovery Center, ACCESS and many others, help coordinate services and work collaboratively with Oakland Schools, through financial and physical commitments.

Refugees are people who have been forced to flee their homeland because of war and persecution. They go to other countries like the United States for safety. Services to refugees include community agency-based case management, employment and English language training.

Immigrants are people who come to the United States by choice and sometimes for the same reasons as refugees. Services to immigrants include community-based case management, English language training, immigration and interpreter services.

Oakland Schools Immigrant/Refugee Program addresses the impact of refugee children in our 28 public school districts by providing support to identify and address gaps in services to all students who are immigrants and refugees. Some of the services provided are:

- Partnerships between refugee providers and local public school districts to collaboratively design, implement and evaluate programs and services which effectively address the needs of refugee children and their families.
- Support for local public school districts to develop programs targeted specifically to refugee and immigrant students.
- Professional development for school staff on the immigration process, trauma and cultural norms, as well as support to schools to promote full integration through English Language Learning (ELL).
- Educate and assist school districts on Title III Immigrant Funds.
- Cultural enrichment and integration of refugee students and their parents by providing referrals and resources to community partners best poised to coordinate these services.
- Enhancement of parent involvement in the education of their children through parent liaison, outreach and education.



3,150 immigrants and refugees were assisted by school districts in Oakland County.

Truancy

If they don't go to school, children can't receive a comprehensive education with a multitude of specialized services to support their growth and learning.

That's why the Oakland Schools Truancy team promotes the three As (Attendance, Attachment and Achievement), and emphasizes early intervention.

There is also a special Back-to-School* program for middle school students, the Oakland County Truancy Task Force and court intervention when needed. The Back-to-School program identifies and addresses the issues that may stand in the way of good school attendance for middle school students.

** The Back-to-School Program is a middle school truancy prevention program. Middle schools refer students who had poor attendance the previous year, but not necessarily truant, and we provide five liaison contractors who each work with five to seven school districts and meet with the students at school to find out what the attendance barriers are and try to help the students with strategies to overcome them. We focus on the 3As: attendance + attachment = achievement, and encourage districts to provide these students a caring adult.*



Number of Truancy Cases by District						
	Truancy Cases			Back-to-School Students		
District	2014-2015	2015-2016	2016-2017	2014-2015	2015-2016	2016-2017
Avondale	95	56	54	138	83	60
Berkley	18	21	11	146	86	29
Birmingham	1	3	2	0	0	0
Bloomfield	8	10	7	0	14	5
Brandon	34	44	37	81	42	65
Clarenceville	7	7	4	107	76	41
Clarkston	36	45	50	127	141	148
Clawson	4	4	42	42	65	22
Farmington	31	30	22	189	140	51
Ferndale	35	38	47	65	52	69
Hazel Park	71	87	73	155	78	55
Holly	47	40	54	43	46	40
Huron Valley	45	49	52	71	62	61
Lake Orion	65	55	62	78	87	61
Lamphere	9	17	23	92	74	48
Madison	12	11	26	77	29	30
Novi	6	17	10	0	0	0
Oak Park	13	24	23	22	31	19
Oxford	35	42	38	40	84	121
Pontiac	266	335	320	197	175	105
Rochester	65	69	54	131	52	9
Royal Oak	9	17	23	66	74	78
South Lyon	11	31	25	56	79	55
Southfield	66	80	90	266	222	11
Troy	12	23	36	159	95	69
Walled Lake	33	62	28	137	123	71
Waterford	135	195	165	380	63	86
West Bloomfield	2	6	10	173	113	160
Total	1,171	1,424	1,388	3,038	2,186	1,569



1,388 truancy cases realized a savings to districts of **\$3.47 million.**

1,569 Back-to-School cases realized a savings to districts of **\$1.569 million.**

Professional Development

If Oakland Schools does not provide direct instruction to Oakland County students, how can we have a positive and continuing impact on improving student achievement? One of the most important ways we do this is by providing professional development in the forms of classes, workshops and training to school staff. By providing teachers and other school employees with the tools and resources to help them sharpen their skills and deliver quality classroom instruction, we ultimately – and positively – impact student achievement.

The chart on the next page illustrates district participation in regional professional development offered by Oakland Schools from July 1, 2014 - June 30, 2017.

- **Number of Regional Participants** for a district indicates the number of district staff who attended workshops offered by Oakland Schools for all Oakland County school districts. Please note individuals from a district may have attended more than one workshop and therefore, may be counted more than once. Most of these workshops were offered onsite at Oakland Schools and required registration through our Event Management department.
- **Number of Regional Events (EBMS)** indicates number of workshops in which a district was represented by one or more participants. Note events are not totaled since participants from different districts may have attended the same event, resulting in multiple counting.
- **Number of Customized Participants** for a district indicates the number of district staff who attended customized professional development offered at district request. Please note individuals from a district may have attended more than one workshop and therefore, may be counted more than once.
- **Number of Customized Events** indicates number of workshops customized for each district. These events are totaled since participants from different districts did not attend the same event.
- **State Continuing Education Clock Hours (SCECHs) Credits Awarded** indicates number of State Continuing Education Clock Hours that participants received as a result of their full attendance at workshops.



In 2016-2017, **2,536 local district participants** attended workshops offered by Oakland Schools.

State Continuing Education Clock Hours (SCECH) Credits Awarded						
	Number of Participants			Number of Credits		
	SCECHs			SCECHs		
District	2014-2015	2015-2016	2016-2017	2014-2015	2015-2016	2016-2017
Avondale	45	52	59	342	611	631
Berkley	83	79	82	784	685	847
Birmingham	139	142	140	1026	867	1452
Bloomfield	149	138	97	969	942	772
Brandon	107	48	55	775	251	484
Clarenceville	29	66	46	252	721	609
Clarkston	128	137	174	884	943	1381
Clawson	36	93	48	338	640	341
Farmington	217	169	164	1899	1319	1409
Ferndale	43	68	59	492	557	730
Hazel Park	64	74	53	434	551	559
Holly	51	79	57	442	823	564
Huron Valley	92	100	91	930	862	897
Lake Orion	53	60	53	390	419	609
Lamphere	84	125	59	712	1026	523
Madison	41	42	20	273	366	214
Novi	99	137	102	421	919	987
Oak Park	62	79	63	564	673	512
Oxford	65	58	57	516	404	679
Pontiac	103	177	134	817	1305	1766
Rochester	218	212	176	1350	1653	1849
Royal Oak	106	135	148	1005	1404	1338
South Lyon	27	36	81	198	339	1391
Southfield	83	139	90	1006	914	829
Troy	145	151	113	1427	1289	1293
Walled Lake	125	170	97	1449	1286	1008
Waterford	95	159	103	793	935	755
West Bloomfield	102	138	115	837	1255	1013
Total	2,591	3,063	2,536	21,325	23,959	25,442

Number of Professional Development Attendees and Number of Events Attended by District												
	Regional Professional Development						Customized Professional Development					
	Number of Participants			Number of Events			Number of Participants			Number of Events		
District	2014-2015	2015-2016	2016-2017	2014-2015	2015-2016	2016-2017	2014-2015	2015-2016	2016-2017	2014-2015	2015-2016	2016-2017
Avondale	271	333	268	83	119	107	223	580	33	27	30	8
Berkley	436	394	416	115	130	130	307	424	31	34	27	8
Birmingham	561	560	544	140	160	157	327	691	37	35	35	8
Bloomfield	445	438	559	109	132	154	51	673	29	28	36	8
Brandon	274	219	222	88	75	94	422	746	25	43	23	8
Clarenceville	134	256	291	52	92	104	147	634	25	22	42	8
Clarkston	411	467	584	116	125	145	174	394	39	31	37	8
Clawson	166	229	223	61	78	74	39	286	27	18	17	8
Farmington	734	794	728	145	179	171	2,089	585	27	99	50	8
Ferndale	163	184	243	73	87	99	201	224	35	29	12	8
Hazel Park	237	231	171	78	88	82	262	440	31	31	26	8
Holly	167	279	209	57	98	80	616	443	27	45	14	8
Huron Valley	535	585	656	114	121	150	1,185	426	37	67	32	8
Lake Orion	407	477	472	103	143	130	118	196	37	21	18	8
Lamphere	294	298	248	93	110	95	71	330	33	25	25	8
Madison	142	203	90	54	93	57	26	156	27	18	26	8
Novi	284	470	411	96	130	110	430	337	27	32	19	8
Oak Park	287	292	299	98	118	94	165	816	27	32	71	8
Oxford	278	345	325	94	107	103	154	443	43	29	45	8
Pontiac	404	742	468	101	166	142	926	1,572	39	109	129	9
Rochester	774	1009	759	150	194	189	694	1,261	35	67	101	8
Royal Oak	331	409	422	105	126	142	273	583	33	40	48	8
South Lyon	213	354	428	66	106	114	289	332	49	30	19	8
Southfield	309	324	313	105	119	121	203	336	29	32	17	8
Troy	599	804	562	130	167	158	455	507	39	50	32	8
Walled Lake	754	767	723	131	183	182	489	1,196	27	49	75	8
Waterford	648	839	661	127	147	150	574	627	33	48	44	8
West Bloomfield	367	462	491	121	144	147	273	611	37	36	29	9
Total	10,625	12,764	11,786	2,805	3,537	3,481	11,183	15,849	918	1,127	1,079	226*

*2016-2017 total does not include number of events hosted by Oakland Schools.

District and School Services

School staff need ongoing support and consultation in order to bring their best to the children of Oakland County every day. Professional development plus consultation and assistance equals a complete system of services and resources that support Oakland County educators in the classroom, driving a bus, counseling students or providing building or district leadership. That's why Oakland Schools offers a wide variety of on-call, online and just-in-time services that supplement the professional development we deliver.

Those Oakland Schools services directly focused on improving student achievement through professional development, consultation, instructional resources and providing other classroom support fall under the umbrella of Instructional Services. Oakland County schools know they can count on the services provided by the Instructional Services departments. Those services include Career Focused Education, Community Programs and Special Projects, Early Childhood, Learning Services, School Quality and Special Education, to deliver everything they need to support and improve classroom instruction.

Examples of Assistance

Through a partnership between the District and School Services and Student Services with authoring assistance from multiple Oakland County local school districts, a multi-disciplined, integrated performance-based curriculum was created to assist districts in simultaneously meeting multiple federal mandates and state curriculum standards in a single unit of study in order to work smart. The curriculum meets the 6th- through 8th-grade Michigan Educational Technology Standards (METs) mandated by the No Child Left Behind (NCLB) technological literacy requirement, and the 7th- through 8th-grade Educational Development Plan (EDP) requirement using Career Cruising.

In order to support parents, the Early Childhood Unit **distributed 25,455 parent-focused materials through districts, schools and other community organizations.**



Districts Save Money With Instructional Services

- The Regional Educational Media Center Association of Michigan negotiated a per building price of **\$735** for Discovery Streaming for the 2016-2017 school year. This was a significant reduction from the list price of \$2,450 per high school building and \$1,990 per K-8 building. During the 2016-2017 school year, Oakland Schools (REMC 17) once again subsidized the use of Discovery Streaming, **saving Oakland County public schools a total of \$128,993**. Through the statewide pricing and the ISD subsidy, **Oakland County schools saved \$552,340**.
- During the 2016-17 school year, Oakland County teachers and students logged into their streaming video accounts over 92,000 times to **download or stream over 142,000 videos and video clips**. Teachers and students also **accessed over 19,000 copyright-friendly images** for use in presentations and documents. The quiz and assignment features were **used more than 3,500 times**. More than 500 articles from the included encyclopedia were also viewed.
- The Oakland Schools/MAISA and MC3 Curricula for districts (\$1,400 per grade level per subject) **provided benefit at value of \$624,770**. The MC3 curriculum is used widely throughout Michigan with approximately over 80% of Michigan schools using the teaching resources, as well as many other states and other countries. MC3 is a collaborative effort spearheaded by District and School Services consultants working closely with the University of Michigan and Wayne State University to ensure the curriculum provides an onramp for college.
- REMC Association of Michigan Save Bid purchasing under market costs provided **savings to Oakland County districts of \$5,923,469**.
Note: The savings can vary greatly from year to year depending on what districts purchase from the bid.
- 25 districts implemented the Atlas Curriculum Mapping System.
- Oakland Schools negotiated a price of \$1.50 per student for Atlas Rubicon a savings of \$2.50 off the regular pricing. With the Oakland Schools subsidy of \$.75 per student, we saved districts \$3.25 per student for a **total savings of \$682,500 across the county**.
- **District and School Services reimbursed districts \$74,724.50** for substitute costs so that teachers could attend professional development.
- Early Childhood purchased countywide licenses for the OnlineCOR (an Early On child assessment tool used in High Scope based preschools) at a price of \$8.95 per child which is a 57% savings off the \$20.95 individual district price. Since 6,795 licenses were purchased, **the total savings was \$81,540**.



A variety of instructional services efforts saved Oakland County districts **\$7,939,343**.

Support Services

At Oakland Schools, we serve student learning in many ways, some more direct than others. By focusing on cost savings, efficiencies of scale and supporting the technological framework for delivery of instruction and its assessment, Oakland Schools employees play an important role in maximizing the dollars that go into every Oakland County classroom. Auxiliary Services, Maintenance and Facility Operations (including the Office of Procurement and Contracting), Communication Services, Financial Services, Government Relations and Pupil Services, Human Resources, JobLink Service Center, Legal Affairs and Technology Services support and strengthen the ancillary services that are essential for the smooth operation of every school.

Oakland Schools Support Services documented **6,935 hours of assistance** to Oakland County school districts.

Districts save money with Support Services

- **Transportation Services worked with 12 school districts to collaborate on routes reducing mileage by 33,210 miles for the school year and saving \$687,266.** This team provided state-mandated safety education for 1,124 bus drivers, mechanics and supervisors, as well as specialized professional development opportunities for 199 mechanics, special education drivers and aides, school bus driver trainers and business office managers
- Pupil Accounting audits are conducted twice a year, which includes ongoing reporting to the Michigan Department of Education to ensure compliance. **Together with Legal Services and Truancy services, this department saved local districts \$95,206.**
- **Oakland Schools Shipping and Receiving drove more than 48,736 miles** last year, providing timely pick up and delivery services to all districts in Oakland County.



The **Legal Services** department saved Oakland County districts

\$50,600*

**253 hours x \$200 per hour*

	2016-2017	
District	Points of Assistance	Hours of Assistance
Avondale	808	309
Berkley	455	292
Birmingham	364	260
Bloomfield	349	215
Brandon	557	189
Clarenceville	389	213
Clarkston	816	284
Clawson	513	199
Farmington	615	246
Ferndale	719	217
Hazel Park	873	260
Holly	673	216
Huron Valley	785	248
Lake Orion	773	237
Lamphere	563	222
Madison	524	210
Novi	460	241
Oak Park	793	253
Oxford	692	278
Pontiac	2,802	251
Rochester	769	266
Royal Oak	576	265
South Lyon	609	233
Southfield	1,024	273
Troy	621	231
Walled Lake	661	302
Waterford	1,727	280
West Bloomfield	584	244
Total	21,092	6,935

Technology Services

Technology Services provides high-quality systems, solutions and support to Oakland County schools. Highlights from 2016-2017 include:

- All 28 districts participated in Illuminate DnA (data analysis).
- Oakland Schools student information system (MISTAR) supported 16 districts and 12 PSAs.
- ONE - Barracuda SPAM Filtering blocked over 2 million SPAM emails each month.
- District staff accessed approximately 1,888 distance learning programs, 5,190 educational programs and down-linked 2,387 videos using the ONE Network.
- Hosted Moodle for 29 districts, one international academy consortium, one site for CFE campuses and four public school academies (PSAs).
- 67,251 staff and students used Moodle services and visited Oakland School Moodle sites 266,632,952 times.

Districts Save Money With Technology Services

- Technical assistance for Oakland Network for Education (ONE) for all districts at no-cost provided benefits valued at \$2,200 per district, totaling **\$61,600**.
- ONE subsidy for consortium members saved **\$200,000**.
- Hosted ONE Moodle Learning Management System at no-charge for 28 districts, saving **\$79,750**.
- Hosted ONE Follett Library Management System at no-charge for 24 districts, saving **\$66,000**.
- Server hosting services provided for 10 districts at a cost savings of \$3,000 per district, totaling **\$30,000**.
- Long-term on-site technical support for districts at no-cost provided benefit valued at **\$308,785**.
- Technical assistance for business applications for eight districts at no cost provided benefit valued at \$15,000 per district, totaling **\$120,000**.
- Student Information System (MISTAR) saved \$56,795 each for 28 districts, totaling **\$1,590,260**.
- SunGard Business PLUS Finance and HR applications saved districts \$94,376 each for 13 districts, totaling **\$1,226,888**.
- AMS Business, Finance and HR applications saved \$94,376 each for seven districts, totaling **\$660,632**.
- Internet Service Provider (valued in market at \$45,000 for equivalent 10MB connection) provided for all districts, saving **\$1.26 million**.
- Barracuda SPAM filtering provided for 12 districts at \$8,000 each, totaling **\$96,000**.
- Illuminate DnA Data Analysis licensing subsidy provided for all districts totaling **\$354,000**.
- Field Services served 10 districts, saving **\$3.2 million** in resources, contracts and countywide solutions.



Technology Services saved
Oakland County Districts

\$9,253,915

Online Application Glossary

AMS - Finance, HR, Procurement and Budgeting application.

Barracuda SPAM Filtering is done for all districts that elect to participate. District email is routed through the Barracuda devices, located at both the primary and secondary head ends, in order to filter all "Blacklisted" SPAM, reducing the amount of inappropriate email sent to each district.

eSurvey - Oakland Schools-developed electronic survey application.

Follet Library Management - Library management application.

General ASP - Technology-based resume database system used to match applicant qualifications to teaching positions in member districts.

Pearson Inform - Comprehensive web-based tool that provides the analysis tools to aggregate and disaggregate different types of testing, proficiency and demographic information.

MIPEER (Michigan Partnership for Essential Education Resources) - A non-profit voluntary organization to provide a framework for the operation, maintenance and utilization and/or the licensing, administration and support of a finance and HR software system to multiple sites in the Oakland County area for educational and related purposes.

MISTAR - Student information system including: scheduling, attendance, food service, grade reporting, parent portal, student portal, etc.

Moodle - Open source software, with no cost for licensing and no contracts. Oakland Schools Moodle hosting is offered to the districts at no cost. Districts do not need to ration Moodle courses, accounts and training, and educators feel empowered to experiment allowing online learning to be inclusive.

MSDS - State of Michigan student data collection system.

Non-Pub - Application is used by non-public schools that educate students living in Oakland County. Oakland LEAs receive reports annually from this system about those students residing within their district boundaries.

ONE - Oakland Network for Education.

Polyplot - Transportation management application.

Qualtrics - Online survey and data management service.

Rubicon Atlas - Curriculum management application.



Online Application Usage

2016-2017 Online Application Usage by District																	
District	Bus. (AMS)	MIPEER	Student (MISTAR)	IT Field Services	ONE	General ASP (App Trkg)	NON- PUB	MSDS	Illuminate	Tech Consulting (long term)	Barracuda (SPAM filtering)	Discovery Streaming	Rubicon Atlas	Moodle	Follet Library Mgt	District Hosting	PolyPlot
Avondale		X	X		X	X	X	X	X		X	X	X	X	X		X
Berkley			X		X	X	X	X	X		X	X	X	X	X	X	
Birmingham		X	X		X	X	X	X	X		X	X	X	X	X		
Bloomfield Hills		X	X		X		X	X	X			X	X	X	X		X
Brandon	X		X		X	X	X	X	X			X	X	X	X		X
Clarenceville	X		X	X	X	X	X	X	X	X	X	X	X	X	X	X	X
Clarkston			X		X	X	X	X	X			X		X	X		X
Clawson	X		X	X	X	X	X	X	X	X		X	X	X	X	X	X
Farmington			X		X	X	X	X	X			X	X	X	X		X
Ferndale		X	X	X	X	X	X	X	X	X		X	X	X	X	X	X
Hazel Park	X		X		X	X	X	X	X			X	X	X			X
Holly			X	X	X	X	X	X	X	X	X	X	X	X	X	X	
Huron Valley		X	X		X	X	X	X	X			X	X	X	X		X
Lake Orion		X	X	X	X	X	X	X	X	X		X		X	X		
Lamphere		X	X		X	X	X	X	X		X	X	X	X	X		X
Madison	X		X		X	X	X	X	X			X	X	X			X
Novi		X	X	X	X	X	X	X	X	X	X	X	X	X	X	X	X
Oak Park			X		X		X	X	X			X	X	X			X
Oxford			X		X	X	X	X	X		X	X	X	X	X		X
Pontiac	X		X	X	X	X	X	X	X	X		X	X	X	X	X	X
Rochester		X	X		X	X	X	X	X		X	X	X	X			
Royal Oak		X	X	X	X	X	X	X	X	X		X	X	X	X	X	X
South Lyon			X		X	X	X	X	X			X	X	X	X		
Southfield		X	X	X	X		X	X	X	X		X	X	X	X	X	X
Troy			X		X	X	X	X	X			X	X	X	X		
Walled Lake			X		X	X	X	X	X			X	X	X	X		
Waterford		X	X		X	X	X	X	X			X		X	X		X
West Bloomfield		X	X	X	X	X	X	X	X	X		X	X	X	X	X	

KEY: X = Current customer district

Time Spent on Technical Assistance

Technology Services District Summary - Time of Service (in hours) for 7/2016 - 6/2017														
District	Business Apps - CGI Advantage	Business Apps - MiPeer	Business Office Consulting	CFE Programs	Field Services	Follet	Illuminate DNA	Medicaid Service Tracker	MISTAR	NonPub System	PolyPlot	State Reporting	Technology Consulting	District Total
All Districts	660	4,667		7,455	10,425		124	64	2,856	18	17	508	593	26,285
Avondale		1,668	1,291				2		337			29	5	3,298
Berkley							1	7				3	15	7
Birmingham		1,713						46					26	1,759
Bloomfield		2,485					4		375		11	21	1	2,875
Brandon	771	20					7		266		9	160	19	1,072
Clarenceville	677	20			3,668		12		180			64	96	4,556
Clarkston			32				1	6			4		6	42
Clawson	1,149	23	2,882		5,235		4		464			39	86	9,757
Farmington		3				1	3		374		6	79	25	386
Ferndale		1,666			6,468		2		394		1	39	32	8,531
Hazel Park	949	1	6,349		998		6		446		2	37	23	8,750
Holly					8,213			11					213	8,224
Huron Valley		1,836						63			7		31	1,905
Lake Orion		1,943			17,856		2	44					141	19,845
Lamphere		1,582					16		541			59	26	2,139
Madison	758	11	8						204			25	30	981
Novi	5	1,708			14,760		5		1,457		5	484	86	17,940
Oak Park		2				1	13		159		4	62	14	178
Oxford								8			5	3	12	13
Pontiac	1,566	2	14,711		12,940		2		695		18	64	115	29,933
Rochester		2,320	3				2	24				2	8	2,349
Royal Oak		2,536			8,096		5		575		5	47	50	11,216
South Lyon						1	2	10				1	26	12
Southfield		2,079			13,212				248		9	11	47	15,548
Troy							2	22					17	24
Walled Lake		25					2	21				1	8	48
Waterford		1,566	37			1	9	3	531		6	39	8	2,152
West Bloomfield		2,596			11,704			107	3				79	14,410
Project Totals	6,534	30,471	2,5314	7,455	113,573	3	225	434	10,103	18	107	1,775	1,832	194,235

Regional Education Media Center (REMC)

The REMC Statewide \$AVE (Schools Aggregated Volume in Education) Bid Project is a service of the 28 REMCs in Michigan, including Oakland Schools/REMC 17. The project aggregates the purchasing power of schools statewide and provides large volume bid prices on a variety of educational resources. Products include supplies, equipment, software, computer and networking, paper and catalog discounts.

The chart to the right shows specific information for each of the Oakland County public school districts.



Regional Educational Media Center Association (REMC) Statewide \$AVE Project Oakland County 2016-17 Savings					
District	Quantity	Education List Price	REMC Save Sales	Savings	Percent Savings
Avondale	12,761	\$254,478	\$159,007	\$95,471	38%
Berkley	20,532	\$280,741	\$138,371	\$142,370	51%
Birmingham	23,360	\$593,096	\$427,590	\$165,505	28%
Bloomfield	24,267	\$410,623	\$276,980	\$133,643	33%
Brandon	13,923	\$137,063	\$80,608	\$56,454	41%
Clarenceville	13,918	\$166,362	\$96,780	\$69,582	42%
Clarkston	28,303	\$522,873	\$283,383	\$239,490	46%
Clawson	7,903	\$84,820	\$49,348	\$35,472	42%
Farmington	52,723	\$967,050	\$472,227	\$494,823	51%
Ferndale	10,010	\$120,410	\$64,124	\$56,287	47%
Hazel Park	5,961	\$207,425	\$189,898	\$17,527	8%
Holly	9,146	\$393,597	\$217,962	\$175,635	45%
Huron Valley	18,858	\$391,567	\$277,755	\$113,812	29%
Lake Orion	47,056	\$427,626	\$219,252	\$208,374	49%
Lamphere	17,082	\$262,332	\$146,217	\$116,115	44%
Madison	13,489	\$410,380	\$204,372	\$206,008	50%
Novi	31,782	\$354,664	\$247,318	\$107,346	30%
Oak Park	9,353	\$137,498	\$95,492	\$42,006	31%
Oxford	60,907	\$849,769	\$505,285	\$344,484	41%
Pontiac	10,727	\$138,904	\$88,553	\$50,350	36%
Rochester	43,286	\$879,767	\$530,245	\$349,523	40%
Royal Oak	21,467	\$255,766	\$156,928	\$98,838	39%
South Lyon	42,761	\$1,366,130	\$850,994	\$515,137	38%
Southfield	21,044	\$346,702	\$211,716	\$134,987	39%
Troy	29,542	\$611,295	\$376,302	\$234,993	38%
Walled Lake	43,675	\$3,801,419	\$2,257,285	\$1,544,134	41%
Waterford	8,040	\$301,765	\$234,907	\$66,858	22%
West Bloomfield	24,331	\$230,997	\$133,053	\$97,944	42%
Oakland Schools	1,110	\$20,981	\$10,679	\$10,302	49%
REMC 17 Totals	667,317	\$14,926,100	\$9,002,631	\$5,923,469	39%

Human Resources

In addition to building and maintaining positive employee relations by supporting the goals, mission and vision of Oakland Schools, **Human Resources supports the work of our local districts through processing certifications and job postings for local districts participating in the Oakland Human Resources Consortium (OHRC).**

Certification Approvals

During the 2016-2017 school year, Oakland Schools processed certification approvals for Oakland County school districts as indicated in the table at right. Temporary approvals are for persons who are attempting school and working toward a certain special education endorsement or approval. Approvals are for school social workers, special education directors or supervisors. They are not an endorsement on a teaching certificate, but rather an approval letter from the Michigan Department of Education.

Oakland Human Resources Consortium

The Oakland Human Resources Consortium (OHRC) is a consortium of Oakland County school districts dedicated to the recruitment, selection, employment and professional growth of quality educators and other school district employees. When candidates submit their applications through the online process, they are entered into the OHRC database and made available to all districts in the Consortium.

Certification Approvals			
District	2014-2015	2015-2016	2016-2017
Avondale	1	8	5
Berkley	4	5	4
Birmingham	3	1	1
Bloomfield	4	3	3
Brandon	8	3	1
Clarenceville	0	1	2
Clarkston	2	4	5
Clawson	4	2	7
Farmington	5	10	15
Ferndale	0	1	5
Hazel Park	6	7	7
Holly	3	0	1
Huron Valley	9	1	5
Lake Orion	2	3	0
Lamphere	0	0	0
Madison	0	0	0
Novi	8	8	16
Oak Park	2	2	0
Oxford	4	1	2
Pontiac	2	4	3
Rochester	2	3	3
Royal Oak	6	5	4
South Lyon	2	2	6
Southfield	1	1	0
Troy	3	5	1
Walled Lake	1	1	1
Waterford	11	6	13
West Bloomfield	1	3	3
Total	94	90	113

Number of Oakland Human Resources Consortium Postings			
District	2014-2015	2015-2016	2016-2017
Avondale	86	62	84
Berkley	10	27	2
Birmingham	331	121	175
Brandon	75	54	59
Clarenceville	25	20	25
Clarkston	110	104	130
Clawson	44	31	90
Ferndale	77	73	94
Hazel Park	7	65	73
Holly	35	42	55
Huron Valley	387	236	279
Lake Orion	165	109	222
Lamphere	165	100	140
Madison	34	34	72
Novi	109	117	151
Oxford	106	103	112
Pontiac	100	74	98
Rochester	342	244	448
Royal Oak	108	94	124
South Lyon	13	6	14
Troy	51	302	289
Walled Lake	78	255	509
Waterford	317	309	348
West Bloomfield	154	131	165
Total	2,929	2,705	3,758

Production Printing and Graphics

Production Printing and Graphics offers quality printing and design at a low price, while remaining dedicated to personalized service and the use of new technology. Services include electronic document transmission and printing, color printing, district delivery of print orders, full-service print shop, page layout and design.

*This table illustrates the **total cost** of district usage of low-cost, high-quality print resources provided by the Oakland Schools Auxiliary Services, Maintenance and Facility Operations Print Production and Graphics Team.*

Total cost indicates the sum of all aspects of design, print and delivery. In addition to Print Production and Graphic Services, this table illustrates district purchases from Production Printing and Graphics.



Production Printing and Graphics saved districts
\$424,612.*

**Oakland Schools pricing is approximately 50% of commercial printing.*

Production Printing and Graphic Services Purchased by Oakland County School Districts			
District	2014-2015	2015-2016	2016-2017
Avondale	\$1,004	\$1,905	\$1,350
Berkley	\$6,751	\$2,700	\$4,795
Birmingham	\$0	\$3	\$17
Bloomfield Hills	\$50,710	\$53,448	\$43,421
Brandon	\$2,264	\$1,557	\$1,549
Clarenceville	\$3,477	\$1,075	\$1,155
Clarkston	\$42	\$417	\$768
Clawson	\$739	\$277	\$13,681
Farmington	\$65,280	\$1,470	\$3,588
Ferndale	\$2,177	\$2,824	\$2,817
Hazel Park	\$-	\$80	\$-
Holly	\$2,914	\$274	\$59,622
Huron Valley	\$6,988	\$10,788	\$10,806
Lake Orion	\$558	\$234	\$2,301
Madison	\$1,064	\$981	\$933
Novi	\$1,831	\$1,341	\$351
Oak Park	\$6,608	\$11,339	\$7,998
Oxford	\$3,627	\$3,167	\$3,599
Pontiac	\$92,716	\$75,432	\$68,146
Rochester	\$14,119	\$11,983	\$15,510
Royal Oak	\$7,525	\$5,637	\$6,715
South Lyon	\$32,279	\$33,377	\$42,451
Southfield	\$17,937	\$11,190	\$8,037
Lamphere	\$29,221	\$17,620	\$6,292
Troy	\$13,385	\$19,005	\$17,355
Walled Lake	\$12,386	\$5,966	\$4,630
Waterford	\$54,784	\$64,155	\$79,934
West Bloomfield	\$17,130	\$23,459	\$16,792
Total Cost	\$448,368	\$361,704	\$424,612

See page 43 for customer comments.

Fingerprinting

To assist Oakland County school districts in maintaining compliance with the state-mandated School Safety Legislation (2005 PA 129-131 and 138), Oakland Schools and the Oakland Association of School Personnel Administrators (OASPA), established a digital fingerprinting program.

This table shows the number of district staff who have come to Oakland Schools for fingerprinting services.



Number of Staff Fingerprinted at Oakland Schools			
District	2014-2015	2015-2016	2016-2017
Avondale	10	12	12
Berkley	6	7	5
Birmingham	34	31	30
Bloomfield Hills	10	44	84
Brandon	16	13	20
Clarenceville	28	0	0
Clarkston	6	24	14
Clawson	1	9	8
Farmington	7	2	4
Ferndale	41	4	5
Hazel Park	56	38	11
Holly	33	27	24
Huron Valley	9	56	48
Lake Orion	5	19	19
Madison	0	9	7
Novi	0	0	0
Oak Park	2	4	4
Oxford	0	2	0
Pontiac	146	58	21
Rochester	15	24	69
Royal Oak	24	31	28
South Lyon	15	22	5
Southfield	0	1	2
Lamphere	1	0	0
Troy	1	0	0
Walled Lake	89	98	79
Waterford	63	74	61
West Bloomfield	3	5	9
Total	621	614	569

Does not count prints done for teachers through agencies.

Medicaid Services

Oakland Schools processes billings on behalf of Oakland County's 28 local school districts and two public school academies for health services provided in the schools for Medicaid-eligible special education students. This is a voluntary program provided at no-cost to the districts and helps to offset some of the health care costs these students incur. Important components of the program are monitoring and compliance services, which are provided to ensure the qualifications of personnel, medical necessity and outcomes of services provided and accuracy of billing.

The accompanying table illustrates resources provided to all Oakland County school districts as related to the Medicaid School Based Services Program.

The number of participating clinicians may change from month to month, therefore an average number was used under the column "Average # of Clinicians."

The column "Total Amount Paid to LEA in FY '17" indicates the payments issued to the local school districts during fiscal year 2016-17 for the Direct Service Program, which includes direct health services and special education transportation, and for the Administrative Outreach Program totaling \$9,373,466.

The Medicaid School Based Services reimbursement methodology, which has been in effect since July 2008, is cost-based and annually reconciled. The payments made to the local districts and public school academies were distributed in June 2017 for the 2016-17 school fiscal year in accordance with the reconciliation time frame established by the Michigan Department of Health and Human Services.

District	Average Number of Clinicians	Medicaid Eligible Students	Direct Service Workshop Participants	Speech Referrals Obtained	O&M Prescriptions	OT Prescriptions (NEW)	(A) Administrative Outreach Program Approved Amount Per LEA	(B) Direct Service and Transportation Approved Amount Per LEA	Total Amount Paid to LEAs in FY 2017 (A + B)
Avondale	40	132	0	45	0	2	\$4,604	\$171,123	\$175,727
Berkley	47	135	0	51	0	9	\$8,567	\$179,292	\$187,859
Birmingham	101	93	0	24	0	17	\$10,773	\$376,816	\$387,589
Bloomfield Hills	86	129	0	55	0	23	\$22,627	\$392,262	\$414,889
Bradford Academy	19	157	15	44	0	7	\$773	\$15,543	\$16,316
Brandon	26	116	0	63	0	20	\$5,144	\$85,697	\$90,841
Clarenceville	13	91	0	54	0	19	\$3,249	\$54,388	\$57,637
Clarkston	181	271	0	116	0	29	\$17,601	\$359,127	\$376,728
Clawson	29	79	0	1	0	1	\$3,142	\$118,605	\$121,747
Farmington	160	254	31	134	0	56	\$25,641	\$642,214	\$667,855
Ferndale	35	134	0	80	0	11	\$2,543	\$125,427	\$127,970
Hazel Park	74	258	19	142	0	54	\$8,000	\$174,408	\$182,408
Holly	96	148	0	70	1	13	\$7,109	\$241,748	\$248,857
Huron Valley	205	377	2	156	0	25	\$21,521	\$492,574	\$514,095
Lake Orion	68	221	0	96	0	10	\$18,625	\$354,580	\$373,205
Lamphere	47	145	0	109	0	31	\$3,213	\$173,736	\$176,949
Madison	23	94	15	64	0	11	\$1,689	\$50,813	\$52,502
Novi	84	54	16	35	0	10	\$15,298	\$230,036	\$245,334
Oak Park	41	235	0	153	0	50	\$4,832	\$163,428	\$168,260
Oakland Schools	6	348	0	0	3	0	\$13,862	\$-	\$13,862
Oxford	57	192	0	80	0	9	\$11,197	\$118,009	\$129,206
Pontiac Academy For Excellence	12	106	7	27	0	3	\$1,216	\$34,146	\$35,362
Pontiac	157	621	19	321	0	150	\$4,296	\$378,021	\$382,317
Rochester	309	347	0	213	1	23	\$35,302	\$1,049,097	\$1,084,399
Royal Oak	50	135	0	74	1	39	\$14,935	\$237,286	\$252,221
South Lyon	87	258	0	114	0	42	\$14,181	\$266,795	\$280,976
Southfield	146	385	10	237	0	80	\$23,588	\$496,524	\$520,112
Troy	108	281	6	123	0	22	\$12,055	\$444,780	\$456,835
Walled Lake	142	347	0	147	0	33	\$31,913	\$708,165	\$740,078
Waterford	161	669	0	325	0	91	\$26,577	\$493,667	\$520,244
West Bloomfield	73	270	0	96	0	10	\$16,762	\$354,324	\$371,086
Total	2,683	7,082	140	3,249	6	900	\$390,835	\$8,982,631	\$9,373,466



Local districts received **\$9,373,466** through Medicaid revenue in Oakland County in 2016-17.

Michigan Green Schools

Increasing numbers of Oakland County schools have achieved Michigan Green Schools status. To be designated a Michigan Green School, K-12 schools must successfully undertake a minimum of 10 out of 20 activities prescribed by state law and submit an application. Ninety-nine schools received the special designation of Evergreen Schools by successfully earning points for extra activities. Thirty schools received Emerald status, and 24 schools received the Green Schools designation. Twenty-four Oakland County districts, all four Oakland Schools Technical Campuses and 28 nonpublic schools across the county participated.

The Michigan Green Schools program began as a grassroots initiative in Livingston County in 2005. This effort resulted in Gov. Jennifer Granholm signing Public Act 146 into law in May 2006. Schools earning the Michigan Green Schools designation received an official Michigan Green Schools flag, a certificate signed by the Oakland County Executive and the Superintendent of Oakland Schools.



Number of Schools Participating in Michigan Green Schools			
	2014-2015	2015-2016	2016-2017
Avondale	1	2	1
Berkley	5	4	4
Birmingham	11	12	12
Bloomfield	9	8	7
Brandon	4	2	2
Clarenceville	2	1	2
Clarkston	7	5	6
Clawson	3	4	3
Farmington	16	15	14
Ferndale	5	5	3
Hazel Park	2	1	1
Holly	3	3	2
Huron Valley	12	9	7
Lake Orion	9	8	8
Lamphere	1	1	1
Madison	0	0	0
Novi	1	1	1
Oak Park	0	0	0
Oxford	2	1	1
Pontiac	1	0	0
Rochester	15	18	18
Royal Oak	8	7	6
South Lyon	2	1	2
Southfield	1	1	0
Troy	12	12	10
Walled Lake	9	9	10
Waterford	2	1	1
West Bloomfield	1	3	3
Total	144	134	125

Cost Recovery Field Services and Legal Affairs

Oakland Schools works with several districts in Oakland County providing non-instructional services on a cost recovery basis. Collaborative efforts include:

- Oakland Schools provides business office and human resource services to The School District of the City of Pontiac under an Alternate Service Provider Agreement to address the district's financial emergency and to successfully implement its Consent Agreement with the Michigan State Treasurer.
- Oakland Schools Technology Services provides a full range of onsite-and centrally-managed technology services to eight districts in Oakland County. Districts utilizing these services realize increases in operational efficiencies and customer satisfaction while directing savings back to the classroom. In fiscal year 2017, one new district entered into an agreement for Oakland Schools to provide technology services.
- Oakland Schools provides additional cost recovery services to districts on an as-needed basis. During the 2016-2017 school year, these services included interim superintendent, business office, communications, early childhood specialist and human resources services.

Services Provided by Legal Affairs 2016-2017

Service	Fiscal Year 2017 Subtotal
District & Community Services	\$35,747
Shared Services	\$96,028
Tuition Programs	\$5,198
Pass Through Grants	\$8,976
Contracts	\$20,083
Total	\$166,032



A variety of services provided by, and through, the **Legal Affairs department** saved Oakland County districts

\$166,032 in legal fees.

To remind us, and you, of what the intermediate school district is here to do, we use the acronym **ISD**:

Increase student achievement

Serve diverse needs of schools

Decrease costs/increase efficiencies



What Our Customers Say

“

Thank you, and today's class was very informative and full of “a ha” moments.

”

“

I am constantly amazed....and overwhelmed, by all this program can do. Thank you for these continual classes; they are a huge asset to me!

”

“

I take these classes over and over again and it is always worth my time. I'm reminded of some things I forgot and learn new things along the way. I'm never disappointed. Thanks for everything you do to help us be successful.

”



Regarding Production Printing and Graphics

“ Always pleased with my printing jobs and delivery. ”

“ Doing a great job. Extremely fast service on the orders I have submitted recently! Correct billing codes every time recently. ”

“ I am very pleased with the service provided! Whenever I need assistance or clarity on an item, I am always provided with a prompt and insightful answer. ”

“ I really appreciate how easy it is to communicate with your offices/staff via email and the quick turnaround times on urgent projects! ”

“ I am very satisfied every time I have placed an order. I always get everything in a timely manner and every time I've had to call requesting help I've always had a good experience. So thank you! ”

“ Excellent service in the past month. Everything ordered has been delivered faster than the estimated time, billed properly and jobs have been perfect. Keep up the excellent work! ”

“ The service is consistently friendly, knowledgeable and professional. The products created by the shop are of high quality and arrive on time. ”

DISTRICT SERVICE REPORT

2016-17

OaklandSchools

Communication Services

2111 Pontiac Lake Rd.
Waterford, MI 48328
www.oakland.k12.mi.us
248.209.2145