



Focused on Results

Superintendent's Message

COVID-19 provided a harsh end to the school year which will not soon be forgotten. We suddenly found ourselves in uncharted waters that will continue to challenge us for the foreseeable future. Still, even in this “new normal,” we are driven by excellence and equity for every student, every day. We continue to collaborate with the Oakland County educational community in preparing our students to be successful and meaningful contributors in a diverse world. And in these trying times, we are also helping students to understand and adapt to change.

At Oakland Schools, our mission is Learning Today, Transforming Tomorrow. We support the educational community by helping local school districts increase student achievement, serving the diverse needs of Oakland County students and driving down costs while improving efficiencies for the schools we serve.

This District Service Report provides an opportunity to conduct an annual review of the services offered to our districts. It is important we identify our most successful programs while also pinpointing opportunities for improvement. By continuing to provide efficient, effective and essential services, we are fulfilling our purpose.

As you view this report, please take note of how your district is utilizing our resources. Oakland Schools is always here first and foremost to provide support to you. We hope your district avails itself of these opportunities as often as possible.

As we continually focus to improve services, I welcome your feedback and comments. Feel free to give me a call at (248) 209-2123.

Sincerely,



Dr. Wanda Cook-Robinson
Superintendent, Oakland Schools



Table of Contents

Every Student. Every Day

What is an Intermediate School District?	4
Service Highlights	4
How This Data Was Collected	4
Our Four Continuous Improvement Plan Goals	5
Our Statement of Purpose, Beliefs and Credo	5
AdvancED	5

Who We Are

Board of Education	6
Administration	6
Leadership Team	6

What We Do for Districts

Oakland Schools Takes Accountability Seriously	7
Oakland Schools Finances	7
Direct Support to Local Districts	8
Oakland Schools Fiscal Year 2019-20 Total Expenditure Summary	8
Districts Save Money With Cooperative Purchasing	9

What We Do for Students

Improving Student Achievement	10
State Assessments	10
Cohort Graduation Rates	11

Student Services

Introduction	12
Career Readiness	13
Oakland Schools Technical Campuses (OSTC)	15
Accelerated College Experience (ACE)	16
Virtual Learning Academy Consortium (VLAC)	17

Special Populations

Community Programs: Homeless Student Services	18
Community Programs: Oakland County Wraparound Services	19
Community Programs: Immigrants and Refugee Services	20

Compliance Unit	21
Capacity Building Unit	22
Materials Center	23
Student Services for Low Incidence	24

Truancy	25
---------------	----

Professional Development	28
--------------------------------	----

Additional Resources

Regional Education Media Center (REMC)	27
--	----

District and School Services

Examples of Assistance	28
Districts Save Money with Instructional Services	29

Support Services

Districts save money with Support Services	32
--	----

Legal Affairs	33
---------------------	----

Technology and Shared Services	34
--------------------------------------	----

Shared Services	35
Technology Services	36
Online Application Glossary	37
Online Application Usage	38
Time Spent on Technical Assistance	39

Human Resources	40
-----------------------	----

Production Printing and Graphics	41
--	----

Fingerprinting	42
----------------------	----

Medicaid Services	43
-------------------------	----

Michigan Green Schools	45
------------------------------	----

Every Student. Every Day.

What is an Intermediate School District?

Created by the Legislature in 1962, Oakland Schools is one of Michigan's 56 educational service agencies that save money and resources for K-12 districts by:

- Providing consolidated support and services
- Training teachers in the latest research-based methods
- Piloting innovative programs
- Coordinating early childhood, special education and vocational services across the regions.

Oakland Schools is an autonomous, tax-supported public school district governed by Michigan General School Laws.

The mission of Michigan's educational service agencies (ISDs, RESAs and RESDs) is to provide visionary leadership and quality services to strengthen teaching and learning for all citizens.

Service Highlights

Oakland Schools is committed to improving student achievement through the research-based development and effective delivery and support of innovative, high-quality instructional products and services in partnership with the schools we serve.

We support teaching and learning in the areas of general, special and career-focused education, and provide assistance in business operations and technology. We also support mandated compliance with state and federal regulations with a variety of services.

Everything a district needs, from workshops on the latest teaching methods, on-site consulting and help with school improvement and curriculum, to management software, food service support and testing of students with special needs (and more), is provided by Oakland Schools.

Oakland Schools' commitment to regionalizing services and supporting collaboration across Oakland County enables local schools and districts to operate more efficiently and economically, saving administrative costs/dollars that can be used directly in the classroom.

How This Data Was Collected

In an effort to focus on results and accountability, Oakland Schools has taken steps to track the services provided to local districts through both quantitative and qualitative measures.

For 2018-19, Oakland Schools collected data in the areas of professional development, assistance and consultation, direct services to students and student achievement.

The data collection tools included online tracking, Excel spreadsheets and project management software. EBMS software is also used by our Event Management team to schedule professional development workshops, register participants and track State Continuing Education Clock Hours (SCECHs).

As we continue to report our services to district customers, we seek to continuously improve our service tracking methods and find meaningful ways to convey our value to our constituents.

Please share your feedback with the Department of Communication Services at communications@oakland.k12.mi.us.



Our Four Continuous Improvement Plan Goals

These broad, organizational goals guide the work of Oakland Schools and provide the framework for departmental planning and initiatives.

1. **Equity**: We will allocate and manage our resources to ensure all learners will have opportunity and access to high-quality education.
2. **Well-being**: We will promote, develop and implement practices to support positive social, emotional, mental and physical well-being of all learners.
3. **Excellence**: We will strengthen the professional practice of educators in order for children and students to achieve high levels of academic performance, acquire essential life skills and demonstrate active citizenship.
4. **Operations**: We will develop and maintain efficient business, financial, human resource, instructional and technology systems to support high-quality education.

Our Statement of Purpose

Every Student. Every Day.

Our Beliefs

- It's about service.
- Students form the lens through which our best educational decisions are made.
- All students can and will learn.
- Collaboration builds understanding.
- Education is a shared responsibility.
- Our success depends upon our employees.
- Change is opportunity.
- Lifelong learning is a key to lifelong success.
- Effective relationships are powerful.
- Differences expand our thinking.
- Visionary leadership creates a dynamic environment.
- We must develop leaders for tomorrow.
- Ethical behavior is everyone's responsibility.

Our Credo

Service, expertise and excellence form the foundation of Oakland Schools. We prepare students to be meaningful contributors in a diverse society. Continuous learning drives our efforts to support local districts and the community while fostering a global perspective. Organizational strength and effectiveness come from inclusion, advocacy, innovation

and leadership. We share responsibility for leading the Oakland County educational community.

We believe our first responsibility is to the educators of Oakland County, their students and families. We believe that all students can learn, and will, given the right resources and time. Our services, products, tools and knowledge are focused to support high levels of student achievement, maximize resources and meet compliance obligations. Through visionary leadership and inclusive relationships, we develop regional capacity for the continuous improvement of student learning.

We believe every employee can be highly productive. We support ongoing learning by providing necessary tools and resources. We hold one another to a high standard of professionalism, respect, integrity and fairness. Together, we embrace a culture that promotes ideas and innovation as it encourages creativity and fun. We deliver high-quality service as we advocate for every child.

We collaborate with the Oakland County community and develop strong partnerships with all levels of government, business, social agencies and education to enhance the quality of life in this region. These collaborations strengthen teaching and learning and increase opportunities for Oakland County students as they graduate to a global economy.

For all those with whom we work and whom we serve, we pledge to partner in practices that honor collaboration, responsible stewardship of public resources, transparent business practices and ethical behavior.

AdvancED

In June 2018, Oakland Schools was granted accreditation from the AdvancED Accreditation Commission, the national

commission that confers the North Central Association Commission on Accreditation and School Improvement (NCA CASI) accreditation seal. The AdvancED ESA Accreditation process provides a national protocol for education service agencies committed to systemic, systematic and sustainable continuous improvement. The process supports, enhances and stimulates growth and improvement throughout the agency. The accreditation process involves three ongoing components: 1) meeting high-quality standards; 2) implementing a continuous process of improvement; and 3) engaging in quality assurance through internal and external review. The agency's accreditation is for a five-year term with regular monitoring of progress and reporting occurring during the term.



Who We Are

Board of Education

Oakland Schools is overseen by the Oakland Schools Board of Education. Our board is elected to six-year staggered terms every other year by the boards of Oakland County's 28 school districts. Candidates are registered electors, and are often local board members.

The board meets twice each month at Oakland Schools unless otherwise noted on the board calendar. These public meetings are posted both on the Oakland Schools website and at the Oakland Schools Educational Service & Professional Development Center, as are property transfer hearings.

Access to meeting schedules, agendas, minutes and handouts is available on the Oakland Schools website at www.oakland.k12.mi.us under "About Us," "Board of Education."



Oakland Schools Board of Education: George Ehlert, Vice President; Barbara DeMarco, Treasurer; Connie Williams, President; Dr. Theresa Rich, Secretary; Marc Katz, Trustee

Administration

Dr. Wanda Cook-Robinson, *Superintendent*248.209.2424

Tammy Evans, *Assistant Superintendent of Shared Services and Chief Information Officer*248.209.2187

Dr. Michael Yocum,
Assistant Superintendent of Educational Services248.209.2037

Dandridge Floyd, *Assistant Superintendent for Human Resources, Personnel Management and Labor Relations*248.209.2429

Leadership Team

Mary Zaleski,
Director of Communication Services248.209.2181

Michelle Saunders, *Executive Director of Financial Services*....248.209.2122

Lisa Hansknecht,
Director of Government and Community Services.....248.209.2137

David Randels, *Director of Government Relations, Education Policy and Research*248.209.2077

Sherry McMillan, Esq., *Executive Director of Legal Affairs*248.209.2062

Karen Olex, *Executive Director of Special Populations*248.209.2533

Jarrad Grandy, *Executive Director of Student Services*248.209.2154

Paul Spoor, *Executive Director of Technology Services*248.209.2180

Jennifer Gottlieb,
Executive Director of District and School Services248.209.2493

What We Do for Districts

Oakland Schools Takes Accountability Seriously

Much of what we as an intermediate school district (ISD) is mandated by federal or state laws with built-in reporting requirements. In addition to these requirements, **Oakland Schools also communicates regularly with referent groups and associations to ensure stakeholders are made aware of the services, resources, and assistance provided for the funding we receive.**

These include:

- An annual budget meeting with school board designates and superintendents who review the Oakland Schools' budget and pass resolutions at the local district level regarding support for the General Fund budget as presented.
- Referent groups such as the Oakland County Superintendents Association, Oakland County School Boards Association, Oakland County School Business Officials, Oakland County Schools Public Relations Association and Oakland County Teaching & Learning Council, among others.
- A countywide Special Education Parent Advisory Council (PAC) that meets regularly to provide input on special education issues and review the ISD Special Education plan.
- A countywide Education Advisory Group made up of community and business leaders for Career Focused Education.
- A regular update to the Oakland Schools Continuous Improvement Plan (CIP) that includes organizational goals, activities to accomplish those goals and progress measures.
- Independent financial audits of Oakland Schools' revenues and expenditures are reported to the Oakland Schools Board of Education and shared with the local districts we serve.
- Ongoing reporting to the Michigan Department of Education to ensure compliance.
- Annual publication and website posting of our ISD Annual Report and the Budget and Salary/Compensation Transparency Reporting.



Oakland Schools is a recipient of the **Certificate of Excellence in Financial Reporting** award, given by the Association of School Business Officials for comprehensive financial reporting for fiscal years 1996-2001, 2003-2019.

Oakland Schools Finances

Oakland Schools is financed by Oakland County taxpayers through an annual authorized property tax millage. **The combined millage rate for 2019-2020 was 3.2539 mills** Oakland Schools operates using three major funds:

- General Education Fund provides instructional and administrative support for districts and obtains revenue largely from a property tax levy. **Oakland Schools was authorized to collect 0.1934 of a mill on the county tax base for 2019-2020.**
- **Special Education Fund was supported by a tax of 2.4589 mills levied on the county tax base for 2019-2020.** This fund supports Special Education administration, student services and educational consulting services at Oakland Schools and center programs in local districts.
- **Career Focused Education Fund was supported primarily by a levy of 0.6016 on the Oakland County tax base in 2019-2020.** This fund supports vocational technical education administration, the four Oakland Schools Technical Campuses that serve students from all 28 local school districts and the CFE Regional Plan.
- In addition to the three major funds, grants are actively sought to defray costs of regional projects. Oakland Schools serves as the fiscal agent for many such grants that fund ongoing and pilot projects for the benefit of Oakland County students.



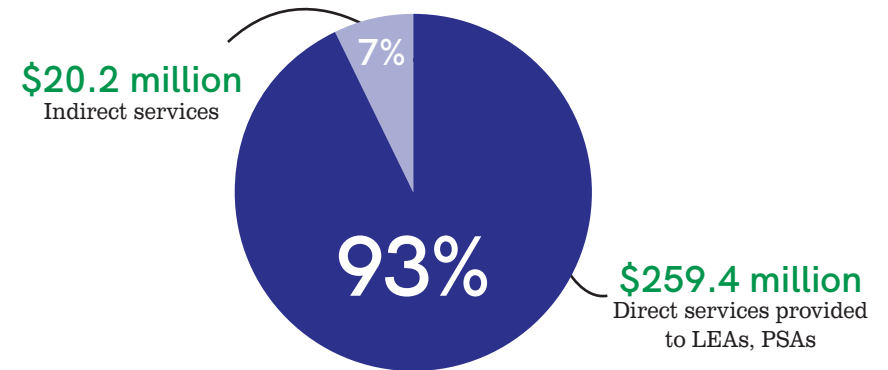
What We Do for Districts

Direct Support to Local Districts

Oakland Schools is committed to putting the majority of our dollars directly where the funds can most benefit students: in our schools and classrooms. The dollars that flow through the ISD are carefully monitored to ensure they are spent as mandated, audited regularly and go back to local districts to support the teaching and learning mission. **We are pleased that in 2019-20, 93% of our recurring funding went to support programs and services in our county's school districts.**

In the graphic to the right, Indirect Services are defined as the administrative-specific appropriation units in the General Education, Special Education and Career-Focused Education Funds, in addition to inter-fund transfers, debt service and capital outlay in specific Capital Projects funds.

Oakland Schools Fiscal Year 2019-20 Total Expenditure Summary



Oakland Schools returned **93 cents of every dollar** to local districts through direct services in 2019-20.

Districts Save Money With Cooperative Purchasing

The Oakland Schools Office of Procurement & Contracting:

- reviews and compiles an online cooperative bid listing for local, regional, state and national bids for districts. Visit www.cooperativecontracts.com. Provides an online bidder list for Oakland County districts.
- assists districts with conducting Invitations for Bids (IFBs) and Requests for Proposals (RFPs) as needed.
- coordinates and facilitates countywide bid efforts for the Oakland County School Purchasing Officials (OCSPO).
- conducts various countywide bids to support local districts such as drug and alcohol testing, student transportation and temporary staffing services.
- educates the vendor community on how to do business with school districts in Oakland County at vendor outreach events.

Please visit the Procurement and Contracting page on the Oakland Schools website at www.oakland.k12.mi.us for more information on how we can help you maximize your resources with these cost efficiencies.

In 2019-2020, districts participated in the following consortia and cooperative agreements:

- **\$2,862,628** was spent through the OCSPO cooperative bids for office supplies, paper, school bus parts, tires, pool chemicals and custodial supplies.
- rebates totaling **\$64,286,637** were allocated to Oakland County districts participating in the recommended Staples Business Advantage contract through OCSPO Sourcwell.
- **\$1,961,559** was spent statewide through the Association of Educational Purchasing Agencies (AEPA) bids and **\$3,652,137** was spent through Sourcwell cooperative bids. This generated revenues of **\$38,783** and **\$35,321.55** respectively, which helped cover administrative costs for the program.
- members of the MOR Purchasing Cooperative for food, supplies and USDA foods (in Oakland, Macomb and Wayne Counties) spent **\$28,250,000** in discounted products and services, saving them time and effort.



What We Do for Students

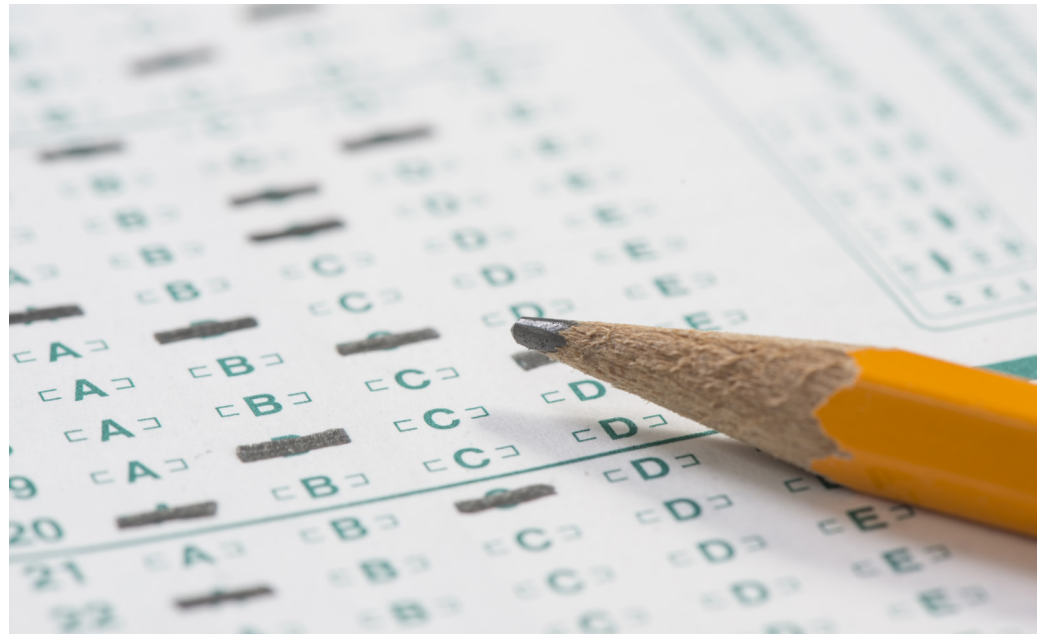
Improving Student Achievement

It is Oakland Schools' role to work behind the scenes, helping those who teach Oakland County's students. Although we do not have direct responsibility for guiding student achievement, we believe there is a correlation between the instructional support we provide and the gains made by students of the teachers we train, coach and support. We are proud to be one of the reasons behind the outstanding achievement of Oakland County students as we compare them to the state averages of standardized tests.

State Assessments

The Michigan Student Test of Educational Progress (M-STEP) is the general summative assessment and is administered each spring to students in grades 3 through 8 and 11. The assessment consists of multiple components: English language arts and mathematics assessed in grades 3-8; science in grades 5, 8 and 11; and social studies in grades 5, 8 and 11. Note: Beginning in the spring of 2019, the state replaced the M-STEP English Language Arts and Mathematics for grade 8 with the PSAT 8/9.

The Michigan Merit Examination (MME) is the general assessment for students in grade 11 and eligible students in grade 12 based on Michigan high school standards. It is administered each spring and consists of three components: College Board SAT; WorkKeys job skills assessment; and M-STEP Science and Social Studies. The state also gives every student in grade 9 the PSAT 8/9 and grade 10 the PSAT 10.



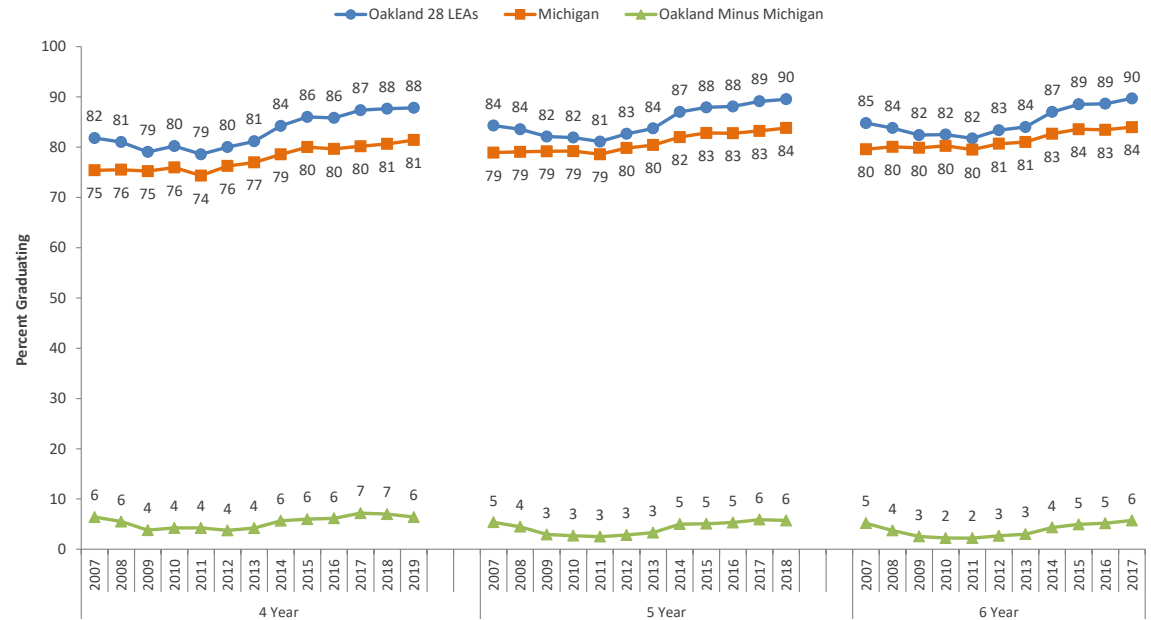
Cohort Graduation Rates

The four-year cohort graduation rate for the class of 2019 was similar to the four-year rate for the class of 2018. The five-year cohort graduation rate for the class of 2018 was slightly higher than the rate for the class of 2017. The six-year cohort graduation rate for the class of 2017 was slightly higher than the rate for the class of 2015.

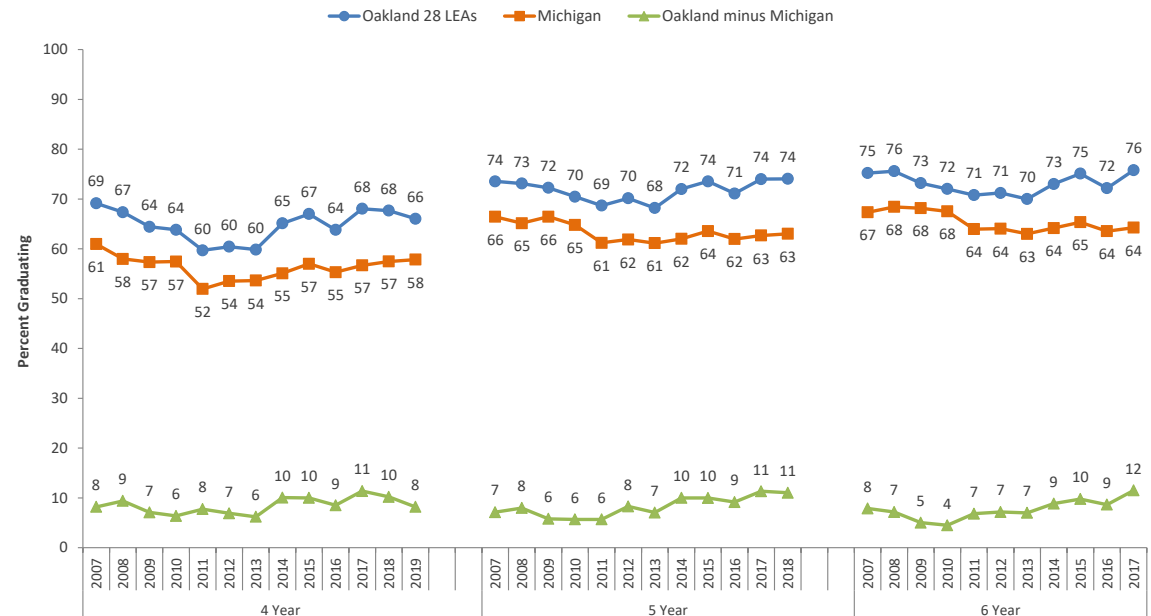
For students with Individualized Education Plans, the four-year cohort graduation rate for the class of 2019 showed a decrease compared to the rate for the class of 2018. The five-year cohort graduation rate for the class of 2018 was similar to the rate for the class of 2017. The six-year graduation rate for the class of 2017 showed an increase from the prior year.



4, 5 and 6 Year Graduation Rates, Classes of 2007-2019



4, 5 & 6 Year Graduation Rates for Students with Individualized Educational Plans, Classes of 2007-2019



Student Services

Career Focused Education (CFE)

CFE offers many other regional initiatives that provide direct support to Oakland County educators, students, families and industry professionals. Partnering with industry and our local districts, CFE helps all students become career ready, which makes their learning directly relevant to their future.

Career Readiness

In partnership with our local school districts and employers, the Oakland Schools K-12 Career Readiness unit helps deliver researched-based strategies for career awareness, career exploration and career planning through a gradual release professional development model, improved counseling processes, stronger connections to business and industry and value-added administrative practices.

Oakland Schools Technical Campuses (OSTC)

Oakland Schools operates four AdvancED (NCA)-accredited regional technical campuses where students spend half their school days preparing to meet the demands of post-secondary education and the expectations of employers in 18 programs of study.

Providing consulting, coordinating, and direct educational services and programs for K-12 students across Oakland County.

Accelerated College Experience (ACE)

Oakland ACE is an early college program for students enrolled at participating Oakland county high schools. The program is open to all students, emphasizing the needs of low income and first-generation college students. A three-year program (grades 11 and 12, plus an additional year through Oakland Community College), Oakland ACE offers students the opportunity, guidance and support to earn up to an associate degree while still in high school.

Virtual Learning Academy Consortium (VLAC)

VLAC is a high-quality, home-based virtual learning opportunity for students in kindergarten through 12th grade. Our program is a public school option for parents and other caregivers who prefer a flexible, home-based environment, and who are willing to guide their child's learning. Parents, students and staff in the VLAC program work together to keep our students engaged and excited about learning.

State-Approved CTE Programs Offered Locally by Districts Across Oakland County	State-Approved CTE Programs Offered Regionally by Oakland Schools	Early College Programs Offered Regionally by Oakland Schools	K-12 Programs Offered Regionally by Oakland Schools	Career Ready Services Offered Regionally by Oakland Schools
Agriscience Automotive Tech Biotechnology Business Administration Collision Computer Networking Computer Programming Construction Cosmetology Criminal Justice Culinary Arts Cybersecurity Energy Graphics Health Sciences Digital/Multimedia Drafting/Design Education Energy Engineering Tech Family & Consumer Sciences Finance Graphics Health Sciences JROTC Marketing Mechanical Drafting Mechatronics Medical Sciences Medium/Heavy Truck Public Safety Radio & TV Systems Administration Visual & Performing Arts Woodworking 241 District Programs	Agriscience Automotive Tech Collision Computer Programming Construction Cosmetology Criminal Justice Culinary Arts Cybersecurity Energy Graphics Health Sciences Machine Tool Marketing Mechatronics Medium/Heavy Truck Welding 81 OTSC Programs	ACE: Accelerated College Experience Support for development of college-readiness skills while earning transferable college credit (up to an associate degree) OTEC: Oakland Technical Early College Automotive Tech Collision Computer Networking Computer Programming Cybersecurity Graphics Health Sciences Machine Tool Mechatronics Welding	VLAC (Virtual Learning Academy): 100% online learning curriculum for Kindergarten-12th grade students established in 2013-2014.	Industry Tours Job Shadows OCCRA High School Robotics OCCRA FTC Middle School Robotics Middle School STEM Summer Camp Educator in Industry Events AUCH Construction Continental AG COMAU Robotics Cyb Liings, Inc Denso International America, Inc. FANUC America Corporation General Motors Google Ann Arbor Henry Ford Health Systems WB HNC Virtual Solutions J&B Medical Supply Mahindra Automotive North America MDOT TRAC Training Michigan Laborers Training and Apprenticeship Institute Oakland County One Stop Shop Oakland County Road Commission Oakland County Water Resource Commission United Shore Mortgage Xello
JROTC Marketing Mechanical Drafting Mechatronics Medical Sciences Medium/Heavy Truck Public Safety Radio & TV Systems Administration Visual & Performing Arts Woodworking 241 District Programs	Tuition: No cost per student District retains student FTE funding	Tuition (ACE): 11th Grade - \$4,900 per student 12th Grade - \$4,900 per student *13th Grade - \$4,900 per student Tuition (OTEC): 11th Grade - \$550 per student 12th Grade - \$550 per student *13th Grade - \$5,900 per student *Receives bonus FTE while student attends OCC full-time	Tuition: \$6,450 grades K-8 (in-county) \$6,700 grades 9-12 (in-county) \$6,650 grades K-8 (out-of-county) \$6,900 grades 9-12 (out-of-county)	Tuition: Cost varies by program.

Career Readiness



A variety of Student Services efforts saved districts **\$28,566,228**.

Benefit to Districts

- **87,555 students** in Oakland County used the Zello system provided by Oakland Schools to expand their career and college readiness.
- **350 students from 18 county high schools** competed in the 20th season of OCCRA (Oakland County Competitive Robotics Association). In addition, 335 students from 24 county middle schools competed in the second season of OCCRA FTC (FIRST Tech Challenge). More than 90% of students and coaches surveyed rated their overall OCCRA experience as good or excellent and would recommend it to other students.
- **912 students** participated in Manufacturing Day, a celebration of modern manufacturing meant to inspire the next generation of manufacturers.
- **41 students** were acknowledged for outstanding technical achievement at the CTE Student Recognition ceremony.
- **350 educators** from across Oakland County participated in 25 Educator in Industry events, spending a day visiting local employers, discussing industry trends and collaborating on classroom best practices to ensure students are college and career ready.

Saving Districts Money

Students attend a technical campus for a half day at no charge to their local districts. By sending their students to the Oakland Schools Technical Campuses, districts saved **\$23,225,665** during the 2019-2020 school year.

This was done when Oakland Schools:

- distributed **\$3.095 million** from the countywide vocational millage to the 28 local school districts to support personnel and other costs of delivering CTE programs and career development activities.
- reimbursed districts **\$1.66 million** in 2019-2020, covering 100% of the cost for transporting students to the Oakland Schools Technical Campuses.
- offered professional development and student enrichment opportunities for the 28 districts, providing a value of **\$364,511**.
- purchased Zello, an online career and college readiness management system, for regional use by all 28 districts and six public school academies, with a value of **\$253,902**.
- CDX Automotive software was distributed to six high schools in five districts, providing a value of **\$15,600**.

Oakland Schools STEM

Oakland Schools STEM (Science, Technology, Engineering and Math) is a leveraged resource which engages students and educators across Oakland County in all STEM content areas; developing technical literacy and learning agility while empowering a STEM ready workforce by accumulating STEM career awareness, exploration and preparedness.

Oakland Schools is developing programs to encourage STEM education in the county:

- **STEM Checkout** provides districts with access to equipment that supports K-12 STEM goals.
- **STEM Digital Resources** supports learners with videos and online materials.
- **STEM Summer Camps** promotes STEM education for middle school learners in the areas of Health Science, Emerging Technologies, Information Technology, Robotics, Culinary and Visual Imaging.
- **STEMi Mobile Lab (coming soon!)**

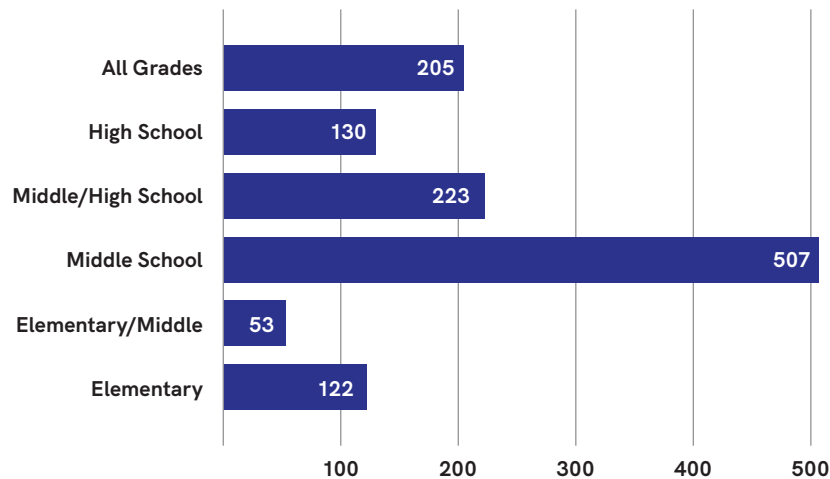
In 2019-2020 Oakland Schools STEM collaborated with Oakland County school districts to provide:

- Professional Learning Engagements to 658 educators.
- direct STEM experiences for 2,341 students.
- STEM Class Sets which were shared with districts 71 times through the STEM Checkout process.

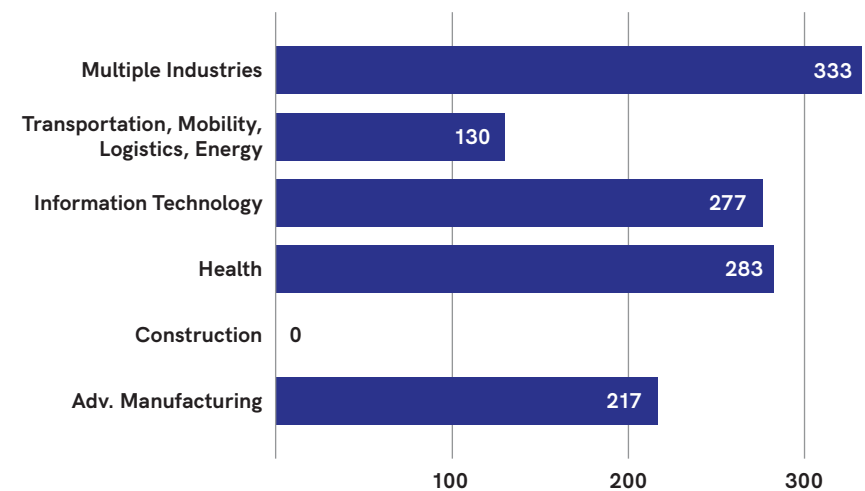
Career Readiness

The Oakland Schools Career Readiness team provides opportunities for students, parents and educators to engage with and learn from local business and industry leaders and post-secondary communities. Unfortunately, many experiences had to be canceled this spring because of COVID, including all Construction events for students.

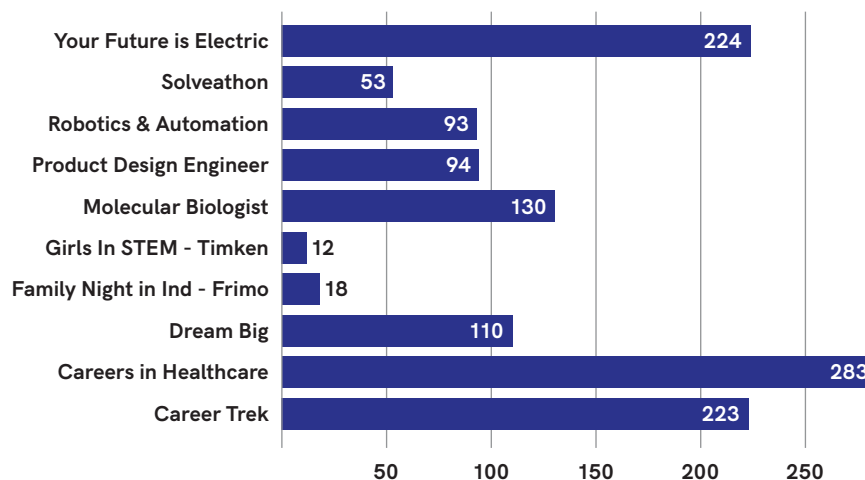
Student Experiences by Grade Band



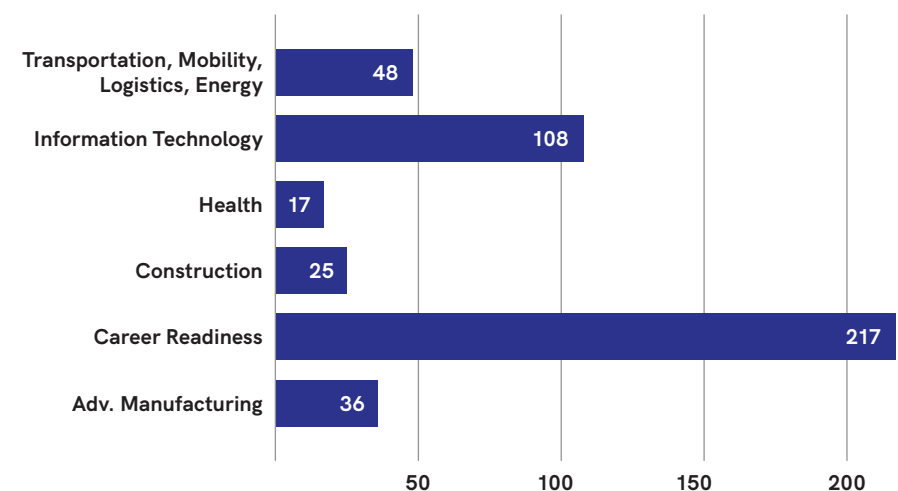
Student Experiences by Industry



Student Experiences by Event



Educator Experiences by Industry



* Transportation, Mobility, Logistics, Energy

Career and Technical Education

Oakland Schools Technical Campuses (OSTC)

Oakland Schools Technical Campus Enrollment		
District	Sem. 1	Sem. 2
Avondale	63	58
Berkley	110	103
Birmingham	58	49
Bloomfield Hills	35	30
Brandon	108	103
Clarenceville	40	40
Clarkston	196	185
Clawson	54	55
Farmington	60	57
Ferndale	101	90
Hazel Park	38	35
Holly	108	107
Huron Valley	160	153
Lake Orion	145	135
Lamphere	52	49
Madison	21	17
Novi	22	20
Oak Park	68	59
Oxford	66	57
Pontiac	123	115
Rochester	197	185
Royal Oak	62	61
South Lyon	86	81
Southfield	89	76
Troy	78	76
Walled Lake	219	210
Waterford	234	216
West Bloomfield	40	41
Private Schools	7	5
Public School Academies	32	27
Semester Totals	2672	2495

Providing funding for districts while increasing student achievement



2,199
industry-recognized
certifications/licenses earned.



234
paid field experiences and
unpaid on-the-job placements
coordinated for students.



130
students participated in the
fourth year of the Oakland
Technical Early College.



10
students participated in
state and international labor
union-sponsored summer
apprenticeship programs.

OSTC Students earned industry-recognized certifications in:

- ACT - Veterinary Foundations
- ACT - Veterinary Kennel Assistant
- Adobe Certified Associate - Illustrator
- Adobe Certified Associate - Photoshop
- CASE - Agriculture, Food, Natural Resources
- AHA - BLS Healthcare Provider CPR
- American Red Cross - Emergency Responder
- ASE - Brakes
- ASE - Maintenance and Light Repair
- ASE - Suspension and Steering
- AWS - S.E.N.S.E Certified Welder GMAW
- Career Safe - OSHA 10
- Certified SOLIDWORKS Associate
- CIW - Advanced HTML & CSS
- CompTIA - A+ Certification
- CompTIA - Network+ Certification
- CompTIA - Security+ Certification
- Energy Industry Fundamentals
- Entrepreneurship and Small Business
- ExCPT - Pharmacy Technician
- FANUC Robotics
- Google Online Marketing
- HAAS - CNC Programmer Lathe
- HAAS - CNC Programmer Mill
- ISCET - Digital Electronics Certification
- ISCET - Semi-Conductors Certification
- MTA Programming Block-Based
- MTA Programming Java Script
- National Restaurant Association - ProStart
- NRF - Customer Service and Sales
- NIMS - CNC Mill Operator
- NIMS - CNC Turning Operator
- NCPCT - Patient Care Technician
- Printed - Digital File Preparation and Output
- Red Cross CPR AED First Aid
- ServSafe - Food Handler
- ServSafe - Manager
- State of Michigan - Certified Nurse Aide
- State of Michigan - Cosmetology License

Accelerated College Experience (ACE)

Benefit to Districts

ACE is a Michigan Department of Education (MDE)-approved early college program that partners districts with Oakland Community College (OCC) under a single umbrella, saving districts the need to negotiate individual partnership agreements with post-secondary institutions.

Students enrolled in the three-year ACE program agree to an additional year of high school, but spend their final year entirely at OCC, where they complete their last graduation requirement. The additional funding received by the district in this fifth year of high school helps to defray costs charged to the district during the first two years.

ACE staff provides essential supports for student success at OCC, relieving districts from having to assign personnel to:

- monitor student progress in OCC courses.
- provide instruction in the required career and college readiness curricula.
- provide individual guidance and counseling related to college coursework, college search, college applications, credit transfers and financial aid.
- manage all communications and invoicing from OCC.
- facilitate OCC English and math placement testing.
- manage student OCC schedules.
- purchase and collect student textbooks.
- purchase, maintain and collect student Chromebooks.

ACE protects graduation rates by engaging all students in a minimum of 40 hours of career exploration, internship, job shadowing or clinical experience, ensuring their “on-time” graduation status as required by the MDE for students enrolled in early college programs.

ACE students take college classes, on a college campus, taught by college instructors alongside college students for transferable college credit. The motivating forces that result from the “power of place” produce levels of student achievement that are points of pride for participating districts.

Student Achievement

- **180** students from **15** districts
- **3.0** GPA in Oakland Community College courses
- **83%** of OCC classes passed (C or better)
- **51%** of program graduates earned associate degrees (62 college credits)
- **84%** earned 50 or more college credits
- **100%** earned the Michigan Early/Middle College Association (MEMCA) Certificate
- **100%** have college-enrollment plans for fall 2020, including transfers to Central Michigan University, Eastern Michigan University, Florida Gulf Coast University, Grand Valley State University, Howard University, Michigan State University, Northern Michigan University, Northwood University, Oakland University, University of Detroit Mercy, University of Michigan – Flint, Wayne State University and Western Michigan University.

Saving Families Money



Estimated cost for tuition, fees and textbooks for an **associate degree at Oakland Community College:**

\$9,156

Total cost to families with students enrolled at Oakland Community College through ACE:

\$0

Virtual Learning Academy Consortium (VLAC)

Virtual Learning Academy Consortium (VLAC) is a full-time virtual learning program allowing districts to have a 100% online opportunity for their students in grades kindergarten to 12th grade. In 2019-2020, VLAC extended its program to include high school students. Students work from home with a family-provided Learning Guide under the mentoring of a full-time local Michigan-certified teacher employed by Oakland Schools. The Oakland Schools mentor teacher monitors progress, conducts weekly check-ins with students and grades all summative assessments.

Benefit to Districts

- VLAC provides a plug and play 100 percent online virtual learning program
- Rigorous, aligned curriculum
- Local, full-time, Michigan -ertified mentor teachers
- A low student-to-teacher ratio (40:1)
- A complete technology package (ChromeBook, printers and internet hotspot)
- Technology support through the Oakland Schools Service Desk
- Drop-in academic support at the Oakland Schools Student Center
- Conducts state assessments and WIDA testing
- Provides in-person orientation
- Organizes field trips and student events
- Options for home-based learning with aligned curriculum and mentor teachers
- Options for travel or club student-athletes

Student Achievement

- **244** students enrolled in VLAC across eight counties.
- **91%** of students (K-5) who completed their reading class achieved mastery (above 70%)
- **92%** of students (K-5) who completed their math class achieved mastery
- **83%** of students (K-5) who completed their science class achieved mastery
- **81%** of students (K-5) who completed their social studies class achieved mastery

Oakland County District Enrollment	
District	2019-2020
Avondale	5
Berkley	1
Birmingham	2
Bloomfield Hills	2
Brandon	3
Clarenceville	1
Clarkston	2
Clawson	5
Farmington	27
Huron Valley	1
Lake Orion	4
Lamphere	2
Novi	3
Oak Park	8
Pontiac	11
Rochester	17
Royal Oak	2
South Lyon	1
Southfield	3
Troy	10
Walled Lake	13
Waterford	26
West Bloomfield	5

2019-2020 Enrollment	
Grade	Total
K	4
1	9
2	9
3	16
4	26
5	24
6	32
7	25
8	51
9	10
10	9
11	20
12	9
Total	244

2019-2020 Enrollment	
County	Total
Genesee	13
Ingham	7
Lapeer	10
Livingston	9
Oakland	161
Shiawassee	2
Washtenaw	12
Wayne	30
Total	244

VLAC is a cost recovery program funded exclusively through district tuition. No Oakland Schools funds, millages, or Act 18 funds contribute to the VLAC budget.



Special Populations

Community Programs: Homeless Student Services

Oakland Schools Homeless Student Services (OSHSS) has been providing services to homeless students in Oakland County for over 20 years.

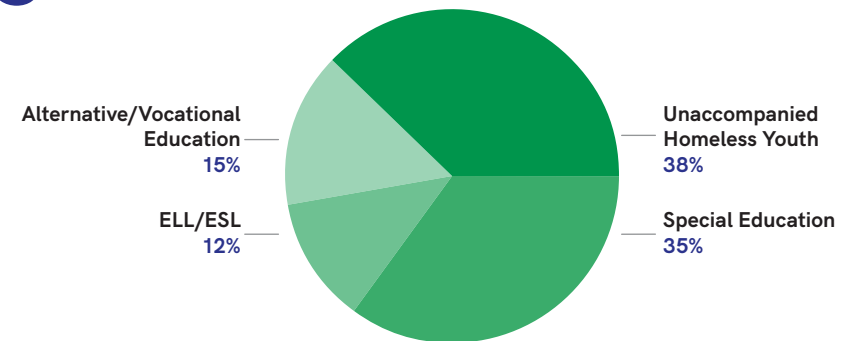
During The 2019-20 school year, despite needing more support than ever, many homeless students went unidentified by school staff due to the lack of “in-person” opportunities to connect and recognize physical signs of homelessness. Most homeless students are often “hidden in plain sight,” and we rely on school staff to notice and identify subtle changes in students that could be indicators of a difference at home. Unfortunately, many of our homeless students were “hidden out of sight” during the second half of the 2019-20 year. Although we know and expect that homelessness has increased over the past six months, likely, the number of identified homeless students that were identified by districts has decreased.

Oakland Schools Homeless Student Services leads Oakland County’s consortium, which includes all districts within the county. Oakland Schools provides students with supportive services and connections to community resources, professional development, technical assistance and guidance, and dispute resolution and mediation services to districts as well as a centralized data system to link all student data. The collaboration and partnership among the entire consortium are imperative to help close the achievement gap for this unique population of students that continue to lag behind peers.

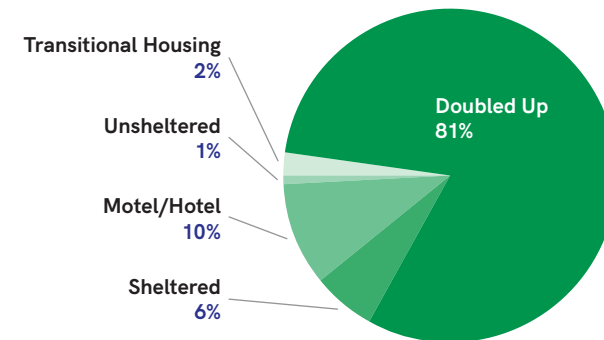
During the 2019-2020 school year, Oakland County School Districts identified approximately **1,900** homeless students.

Based on student information and service requests made to Oakland Schools Homeless Student Services, the needs of homeless students continue to include assistance with school supplies, transportation, appropriate school clothing and emergency assistance such as shelter and food. The following data highlights the living situations of homeless students and families that attend school in Oakland County as well as the needs and services requested.

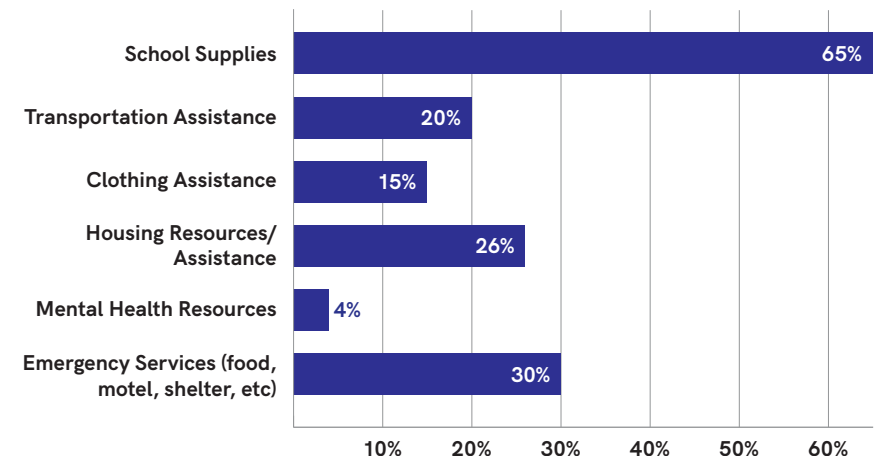
Special Populations



Living Situation



Needs/Requests



Special Populations

Community Programs: Immigrants and Refugee Services

Many school districts in Oakland County have welcomed an extraordinarily high number of immigrant families with school age children into their communities in the past several years. Children have witnessed firsthand and the crippling effects of this devastation on their ability to attend and succeed in school.

Oakland Schools offers assistance in helping transition this student population by providing systemic consultation and coordination to the Immigrant community of students new to Oakland County. The goal is to increase school attendance and achievement while implementing an information and trauma-based service model to maximize student attendance, engagement and achievement.

Community partners such as Wayne State University, Samaritas, Catholic Charities of Southeast MI, Centro Multicultural La Familia, United Community Family Services, Oakland Community Health Network, the Oakland County Health Department, Trauma Recovery Center, ACCESS and many more help coordinate services and work collaboratively with Oakland Schools, putting commitments on the table of dollars and presence.

Oakland Schools Community Program addresses the impact of all immigrant children by providing support to identify and address gaps in services to all students who are immigrants.

Some of the services being provided are:

- partnerships between immigrant providers and local public school districts to collaboratively design, implement and evaluate programs and services which effectively address the needs of all immigrant children and their families.
- support for local public school districts to develop programs targeted specifically to immigrant students.
- professional development for school staff on the immigration process, trauma, cultural norms and support to schools to promote full integration through English Language Learning (ELL.)
- cultural enrichment and integration of refugee students and their parents by providing referrals and resources to community partners best poised to coordinate these services.
- enhancement of parent involvement in the education of their children through parent liaison, outreach and education.



3,625 immigrants and refugees were assisted by school districts in Oakland County.



Special Populations

Community Programs: Oakland County Wraparound Services & Educational Transition Service

Wraparound is a strengths-based planning process to support high-risk students and allow districts to avoid costly, disruptive out-of school placements. Wraparound is a team-based, shared decision model where highly individualized plans are developed to assure each student can experience academic and social success in their school, home and their community. Wraparound combines students, community and family members with school staff who work together improving outcomes, keeping students with extreme behavioral problems in school and class.

This plan is created using intensive community supports coordination in a well-established, nationally-recognized model.

Due to the highly complex needs presented by these students, interventions that are the most successful extend beyond the boundaries of the school building, utilizing natural and community supports whenever possible to assure stability and academic success.



One in 10 students has serious mental health problems severe enough to impair how they function in school, home or the community.

3x

The rates of suspension and expulsion for elementary students with severe mental health problems are **three times higher** than their peers.

44%

High school students with mental health problems have a **dropout rate of 44% nationally**. Those who stay in school without assistance are **twice as likely** as their peers to receive all D's and E's.



Facts:

149 students were served in the Wraparound program during the 2019-2020 school year.

Wraparound was successful in keeping **92% of referred students in school** during the 2019-2020 academic year.

This represents a potential of **\$1,208,539** in retained revenue for local districts.

Educational Transition Service

Oakland Schools provides coordination of educational re-entry for students exiting Children's Village and returning to public education throughout Oakland County to maximize successful transition back into their schools. There are more than 230 Oakland County students in some sort of educational transition between children's village and local districts at any given time.

What we do:

- Coordinate educational placement
- Collaborate with Oakland County staff
- Remove barriers
- Secure services and supports
- Document progress to Circuit Court

Some of the services being provided are:

- **141 students** received educational planning support to transition from Children's Village back to school
- Service was provided to **all 28 districts**
- **141 individualized plans** developed to maximize student success
- **26 planning meetings per week** on average to provide districts with information and support

Special Populations Compliance

The Special Populations Compliance Unit purpose statement is, **“to provide services and support that empower districts in ensuring compliant practices for the delivery of free and appropriate public education.”**

The Compliance Unit creates a cost benefit for districts through support of programming and service provision for students with IEPs. Compliance assistance is provided through web-based materials, in-person training, just-in-time consultation and technical assistance with district staff.

Countywide IDEA and MARSE compliance support is achieved through phone calls from parents, often assisting local districts and public school academies (PSA) with time savings and the dispute resolution process.

Facts:

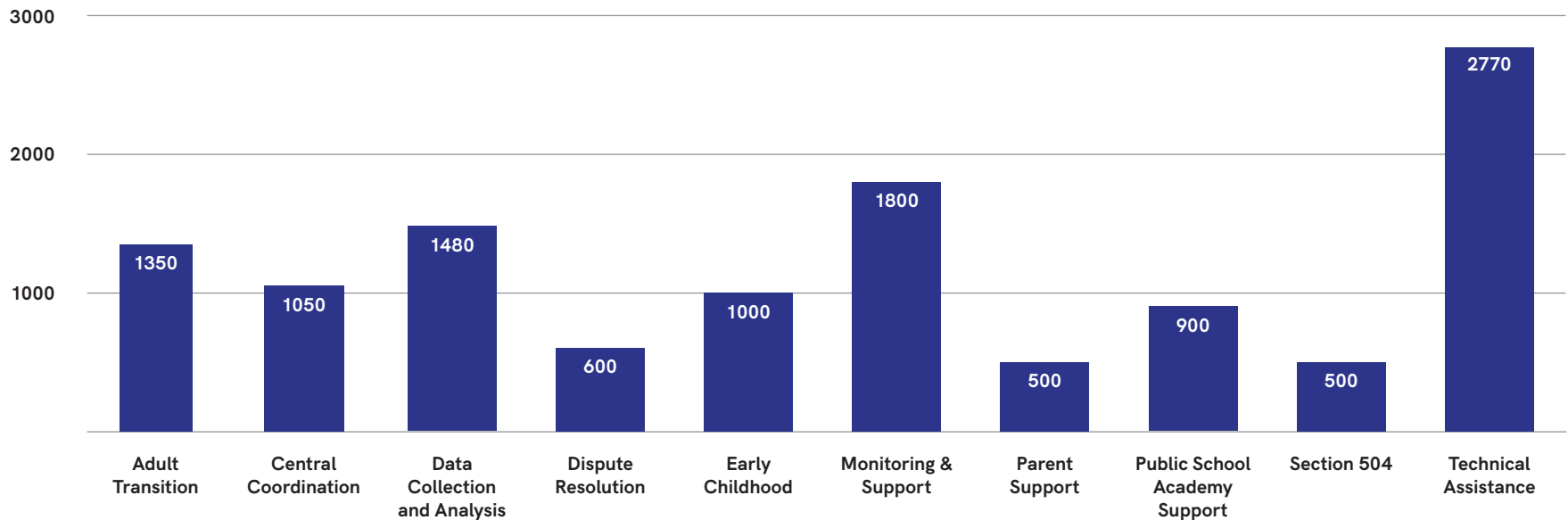
More than seven monthly Parent Advisory Committee meetings and training opportunities

300+ special education staff fully trained as IEP Coaches in 28 local districts and 13 PSAs

185 individual phone calls averaging approximately 30 minutes in length with parents and advocates

On-demand access to professional learning materials via miPLACE

Compliance Hours of Support



Special Populations Capacity Building

The Special Populations (SP) Capacity Building Unit provides a robust continuum of high-quality centralized and customized professional learning opportunities to special educators and administrators. Our events are designed to guide each local district and public school academy in developing the capacity needed to deliver effective, evidence-based instruction and support services to students with IEPs, and increase student achievement, through a combination of professional learning and support of critical implementation strategies in the field.

Customized professional learning events are delivered by Oakland Schools consultants onsite at the local district/public school academies,

topics, audience and schedule are selected by the district administrator. Offerings are further grounded in data and practices specific to the district/PSA and this option eliminates substitute and mileage costs to districts.

In addition to offering professional learning opportunities, SP Capacity Building consultants add further cost benefit to local districts by facilitating mental health consultations, augmentative alternative communication and assistive technology, and student problem-solving supports for our most complex students in the county at no cost to our districts or families.

Centralized and Customized Professional Learning Events

Equity of opportunity

- Approximately **5,400** educators served across all disciplines
- Over **115** centralized professional learning events held at Oakland Schools provided over **229** days (**13%** of events in a hybrid format **9%** in a fully virtual format)

Cost efficiency

- Access to national speakers at subsidized rates (only **\$15** to cover catering costs) for Oakland County special education staff
- **\$35,000** in substitute reimbursement to offset cost to districts
- Unlimited access to OS consultants with a wide variety of expertise at **no cost**

Reducing isolation and promoting retention in the field

- Networking with other educators to problem solve, collaborate and build relationships

Intentional Design

- Over **19** different categories of professional learning supported
- Embedded PL is designed with scope and sequence to build skills over time
- Maximizing and prioritizing time spent with educators to produce greatest impact on student achievement and outcomes

Customization

- 95 requests in 2019-2020 to 33 districts and public school academies at **no cost**

Services for Students with Complex Needs

Aspire Program

- **16** students supported from **13** resident/operating districts; **326** days of partial hospitalization/outpatient services; **109** collaborative meetings, **6** agencies represented, **ZERO** cost to districts and families

Psychiatric Consultation

- **Nine** consultations from **eight** local districts/PSAs; Average cost of psychiatric consultation in the private sector- **\$700-\$1,000**, **ZERO** cost to our districts/families

Student Problem Solving

- **10** referrals from **seven** local districts/PSAs, **two** cases supported through the SPS process

Augmentative Alternative Communication and Assistive Technology

- **1,306** students with AAC devices for communication and **69** students with Orthopedic Impairments for AT to access the curriculum

Center Program Liaisons

- **Seven** Oakland Schools consultants act as liaisons to our center programs across the county, building capacity with staff, problem solving and sharing resources

Special Populations Materials Center

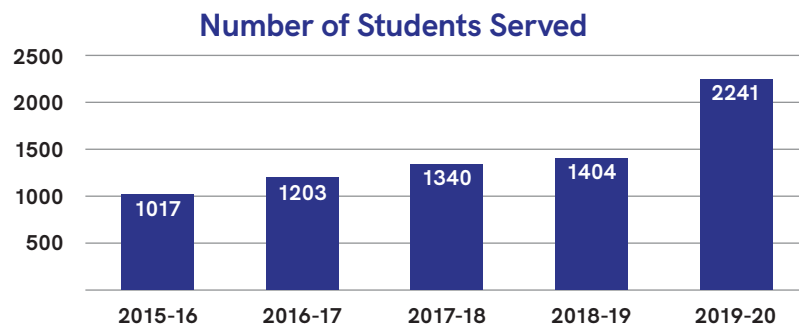
The Materials Center (MC), part of Oakland Schools Department of Special Populations, provides materials and services to the districts and public school academies of Oakland County on behalf of students with low incidence disabilities. The Materials Center researches, locates, evaluates and procures appropriate assistive technology, instructional materials and alternate-format textbooks to meet the needs of students who have an Individualized Educational Program (IEP).

The Materials Center creates cost benefit by utilizing volume purchasing power through the use of existing cooperative bids and by initiating Invitations for Bids (IFBs) and Requests for Proposals (RFPs). Inventory is managed, tracked and reused, allowing for the responsible use of resources across all districts.

In addition to providing materials, the Materials Center offers a comprehensive customer service system to support internal and district staff in the use of the materials provided. Support is offered in the form of setup, staff training and after-delivery troubleshooting, maintenance, repair and technical assistance.

During the 2019-2020 school year, the Materials Center:

- provided materials to each of Oakland County's 28 public school districts at a value of **\$3,860,953**.
- processed over **1,500** new requests for student materials constituting over **3,600** individual items.
- provided **218** items to **16** students in **nine** public school academies at a value of **\$51,654**.
- provided hearing assistive technology to **16** students on **504** plans at a value of **\$19,653** on a cost-recovery basis.
- processed over **100** requests for the loan of **179** assessment and professional resource items to district staff at a value of **\$47,000**.
- responded to over **2,000** requests for support.



Number of Students Served and Value of Materials by District						
District	2017-2018		2018-2019		2019-2020	
	Students Served	Value of Materials	Students Served	Value of Materials	Students Served	Value of Materials
Avondale	15	\$25,809	23	\$44,835	39	\$56,852
Berkley	30	55,919	28	53,740	48	115,131
Birmingham	66	102,717	59	118,259	106	142,634
Bloomfield	106	332,457	106	311,417	166	478,194
Brandon	8	38,833	4	9,413	12	25,652
Clarenceville	12	8,376	8	7,728	19	21,177
Clarkston	55	89,634	48	79,472	80	63,112
Clawson	30	34,141	26	37,991	42	50,965
Farmington	68	193,618	71	204,917	110	205,822
Ferndale	14	14,336	19	29,905	31	51,222
Hazel Park	22	38,160	17	55,524	42	70,130
Holly	19	66,747	26	52,805	42	51,601
Huron Valley	61	110,191	80	158,850	112	185,171
Lake Orion	43	116,348	56	118,492	85	158,591
Lamphere	48	86,560	47	67,676	79	114,804
Madison	3	3,223	6	4,171	16	23,925
Novi	21	47,962	19	110,456	41	129,009
Oak Park	16	27,484	16	25,887	36	56,791
Oxford	37	54,730	39	87,133	49	74,072
Pontiac	50	57,464	47	75,885	81	112,219
Rochester	136	202,347	149	189,815	217	229,015
Royal Oak	37	162,308	43	168,731	66	189,687
South Lyon	33	154,290	45	178,877	60	232,795
Southfield	60	63,810	70	75,394	132	148,254
Troy	81	151,661	91	161,935	136	226,626
Walled Lake	101	223,171	106	270,180	160	275,818
Waterford	118	241,492	119	239,870	158	279,439
West Bloomfield	34	54,949	26	38,308	60	92,245
PSAs Combined	16	49,074	10	47,169	16	51,654
Total	1,340	\$2,807,811	1,404	\$3,024,835	*2,241	\$3,912,607
Cost/Student		\$2,095		\$2,154		\$1,746
Headcount	23,123		23,271		23,994	
MC Provided	5.79%		6.03%		9.3%	

*Increase due to correction of system reporting issue. Students serviced were not impacted.

Special Populations

Student Services for Low Incidence

Oakland Schools Student Services for Low Incidence unit creates a cost benefit for districts which includes support of programming and services provisions for students with low-incidence disabilities birth-26 years of age. This is inclusive of teacher consultant service working in the local districts and PSAs to provide direct support to students, procurement and training in the use of assistive technology devices, evaluations and assessments, the provision of alternate text materials/technology and consultative services to parents, staff and students.

The Student Services for Low Incidence purpose statement is: “**to provide collaborative consultations and specialized instruction for students with low-incidence disabilities to support equitable access.**”

What we do:

- Teacher consultant services to students with IEPs realized a savings to districts of **\$4,376,153**
- As a result of COVID-19, virtual lessons were offered from **April through June 2020** as part of good faith efforts.
- **Extended school year provided** when required for students to make educational progress.
- **Early On services provided throughout the calendar year** to support growth toward measurable outcomes.
- **2,195 District Service Request (DSRs) were processed.** See table for hours of request per discipline
- **28 public school districts and 7** public school academies were served.
- **88% of tax-levied Special Education funds** are directly distributed to Local Education Agencies (LEAs) providing districts with over **\$115,000,000** to offset Special Education costs.

Student Services for Low Incidence Service Requests for 2019-20	
District	Hours
Evaluations (DHH, TBI, VI, O&M, Audiologicals, Psychiatric)	305
ASPIRE (New Oakland)	17
Student Problem Solving	10
Center Program Placement Considerations	179
Program Problem Solving	7
Assistive Technology (AT) Consideration	55
Alternative Augmentative Communication (AAC) Consultations	22
Assistive Technology Services	1292
Deaf/Hard Hearing (DHH) Teacher Consultant Services	255
Oriention and Mobility (O&M) Specialist Services	73
Physical Otherwise Health Impaired (POHI) / Traumatic Brain Injured (TBI) Teacher Consultant Services	28
Visually Impaired Teacher Consultant (VITC) Services	310
Total	2553



Truancy

If they don't go to school, children can't receive a comprehensive education with a multitude of specialized services to support their growth and learning.

That's why the Oakland Schools Truancy team promotes the three As (Attendance, Attachment and Achievement), plus emphasizes early intervention.

There is also a special Back-to-School* program for middle school students, the Oakland County Truancy Task Force and court intervention when needed. The Back-to-School program identifies and addresses the issues that may stand in the way of good school attendance for middle school students.

** The Back-to-School Program is a middle school truancy prevention program. Middle schools refer students who had poor attendance the previous year, but not necessarily truant, and we provide five liaison contractors who each work with five to seven school districts and meet with the students at school to find out what the attendance barriers are and try to help the students with strategies to overcome them. We focus on the 3As: attendance + attachment = achievement, and encourage districts to provide these students a caring adult.*



Number of Truancy Cases by District						
	Truancy Cases			Back-to-School Students		
District	2017-18	2018-19	2019-20	2017-182	2018-192	2019-2020
Avondale	64	84	85	69	180	156
Berkley	5	9	7	51	60	43
Birmingham	1	2	2	0	0	0
Bloomfield	8	12	7	0	33	0
Brandon	44	41	43	55	0	11
Clarenceville	0	10	4	60	46	50
Clarkston	43	70	64	143	127	100
Clawson	55	43	26	73	112	95
Farmington	26	23	19	43	36	90
Ferndale	97	75	94	128	86	65
Hazel Park	115	147	201	58	137	132
Holly	64	51	59	67	61	61
Huron Valley	65	86	64	39	48	85
Lake Orion	69	75	62	60	91	139
Lamphere	13	35	28	73	110	34
Madison	36	24	31	24	31	16
Novi	20	23	12	0	0	0
Oak Park	18	22	23	0	0	83
Oxford	28	52	61	162	307	227
Pontiac	256	395	481	197	146	288
Rochester	30	44	49	34	23	37
Royal Oak	11	15	9	1	7	0
South Lyon	30	26	25	56	50	48
Southfield	104	65	115	115	95	100
Troy	20	28	35	109	122	168
Walled Lake	46	62	54	52	65	73
Waterford	209	213	139	269	182	196
West Bloomfield	20	21	11	92	147	73
Total	1,497	1,753	1,810	2,030	2,302	2,370



1,810 truancy cases
identified in 2019-2020

2,370 Back-to-School cases
identified in 2019-2020

Professional Development

If Oakland Schools does not provide direct instruction to Oakland County students, how can we have a positive and continuing impact on improving student achievement? One of the most important ways we do this is by providing professional development in the form of classes, workshops and training to school staff. By providing teachers and other school employees with the tools and resources to help them sharpen their skills and deliver quality classroom instruction, we ultimately – and positively – impact student achievement.

- **Number of Customized Participants** for a district indicates the number of district staff who attended customized professional development offered at district request. Please note individuals from a district may have attended more than one workshop and therefore, may be counted more than once.
- **Number of Customized Events** indicates number of workshops customized for each district. These events are totaled since participants from different districts did not attend the same event.
- **State Continuing Education Clock Hours (SCECHs) Credits Awarded** indicates number of State Continuing Education Clock Hours that participants received as a result of their full attendance at workshops.



In 2019-2020, **11,407 participants** attended customized professional development workshops offered by Oakland Schools.



Customized Professional Development 2019-2020				
District	Events	Participants	Participants w/SCECHs	SCECH Hours
Avondale	79	259	66	780.5
Berkley	114	373	76	558.75
Birmingham	111	359	72	572.25
Bloomfield Hills	116	354	90	522.5
Brandon	63	139	29	270
Clarenceville	85	192	35	306.5
Clarkston	95	454	136	865
Clawson	56	122	20	146.25
Farmington	128	441	99	1010.5
Ferndale	107	264	44	366
Hazel Park	108	273	59	674.5
Holly	83	289	50	498.5
Huron Valley	124	438	98	604
Lake Orion	127	365	70	623
Lamphere	82	197	23	263.25
Madison Heights	56	90	39	231
Novi	94	227	71	295
Oak Park	94	225	50	551
Oakland County Charter, Private or Parochial School	175	373	106	1469.25
Other	179	880	638	8543.5
Out of County School District	96	418	483	7709.75
Oxford	104	280	51	350
Pontiac	122	393	90	964.25
Rochester	156	852	190	1250.25
Royal Oak	114	315	106	956.75
South Lyon	109	387	71	434.75
Southfield	122	322	79	633.25
Troy	134	530	111	748.25
Walled Lake	135	557	166	1081.5
Waterford	121	556	132	1246.75
West Bloomfield	127	483	74	671.25
TOTAL	3,416	11,407	3,424	35,198.00

Regional Education Media Center (REMC)

The REMC Statewide \$AVE (Schools Aggregated Volume in Education) Bid Project

is a service of the 28 REMCs in Michigan, including Oakland Schools/REMC 17. The project aggregates the purchasing power of schools statewide and provides large volume bid prices on a variety of educational resources. Products include supplies, equipment, software, computer and networking equipment, paper and catalog discounts, and Personal Protective Equipment (PPE).

The chart to the right shows specific information for each of the Oakland County public school districts.



Regional Educational Media Center Association (REMC) Statewide SAVE Project - Oakland County 2019-20 Savings					
District	Quantity	Education List Price	REMC Save Sales	Savings	Percent Savings
Avondale	17,278	\$413,448	\$287,555	\$125,893	30%
Berkley	19,702	\$553,724	\$338,307	\$215,417	39%
Birmingham	15,764	\$435,441	\$299,552	\$135,889	31%
Bloomfield Hills	10,939	\$870,395	\$695,831	\$174,560	20%
Brandon	11,904	\$104,976	\$56,644	\$48,332	46%
Clarenceville	5,847	\$408,437	\$197,339	\$211,098	52%
Clarkston	19,966	\$1,036,458	\$516,670	\$519,793	50%
Clawson	7,916	\$213,138	\$148,207	\$64,932	30%
Farmington	20,503	\$506,911	\$320,357	\$186,553	37%
Ferndale	17,256	\$584,072	\$315,227	\$268,845	46%
Hazel Park	6,982	\$168,223	\$144,143	\$24,080	14%
Holly	9,458	\$626,363	\$437,835	\$188,528	30%
Huron Valley	34,623	\$371,872	\$201,113	\$170,753	46%
Lake Orion	27,841	\$450,962	\$281,054	\$169,908	38%
Lamphere	22,015	\$672,798	\$421,710	\$251,089	37%
Madison	12,420	\$141,548	\$90,932	\$50,617	36%
Novi	15,868	\$311,687	\$195,117	\$116,570	37%
Oak Park	14,580	\$196,875	\$135,451	\$61,424	31%
Oxford	10,099	\$630,064	\$388,089	\$241,975	38%
Pontiac	16,426	\$1,012,176	\$685,562	\$326,611	32%
Rochester	48,114	\$1,393,702	\$797,292	\$596,408	43%
Royal Oak	21,482	\$325,074	\$199,231	\$125,845	39%
South Lyon	36,955	\$885,433	\$495,062	\$390,370	44%
Southfield	13,045	\$363,250	\$215,373	\$147,878	41%
Troy	42,046	\$1,341,633	\$977,575	\$364,053	27%
Walled Lake	41,213	\$412,788	\$265,666	\$147,120	36%
Waterford	15,983	\$851,029	\$723,955	\$127,076	15%
West Bloomfield	46,131	\$875,881	\$462,309	\$413,571	47%
Oakland Schools	34,526	\$1,600,796	\$1,083,106	\$517,690	32%
REMC 17 Totals	616,882	\$17,759,154	\$11,376,264	\$6,382,878	36%

District and School Services

The District and School Services (DSS) Department is committed to serving all learners in Oakland County through a variety of means including, but not limited to: providing professional learning for educators, facilitating networking groups for educators, consulting with educational leaders, developing resources, advocating for Oakland County students at the state level, and establishing consortium pricing and other

cost savings for tools that districts need to support student learning. DSS is also focused on several large projects, such as the Literacy Essentials Oakland (LEO) project, the support of districts with Comprehensive Support and Improvement (CSI) Schools, and responding to COVID-19 by providing guidance, technical assistance, resources and tools.

Professional learning for educators

The DSS team develops and facilitates regional professional learning and customizes professional learning for individual districts. From July through mid-March, DSS hosted 186 regional professional learning events with 6,158 participants. A few examples of these professional learning events include:

- Add+Vantage Math Recovery Course 1 (AVMR 1) (four-day Event)
- Math Recovery Intervention Specialist (MRIS) (10-day event plus district-based coaching)
- Data Based Decision Making for K-5 Educators 2019-20 (3-day event)
- Principals' Learning Community (3-day event)
- Trauma and Resilience 101
- Social Emotional Learning: Infusing It Everywhere In Your School (3-day event)
- Supporting ELs in Science
- Smells Like Teen Spirit: What's New in Young Adult Texts?
- Culturally Responsive Teaching (4-day event)
- Anti-Racist Leadership Institute (4-day event)
- Early Childhood Leader Professional Learning

The DSS team worked closely with districts to develop professional learning opportunities that were tied to their strategic goals. A few examples of these learning experiences include:

- Lake Orion administrators participated in the four-part professional learning series "What do Michigan school leaders need to know about English Learners?" The series was related to their strategic goals of increasing parent communication with multilingual families and improving academic outcomes for English Learners.
- DSS consultants partnered with the Michigan Assessment Consortium and the The Center for Assessment to support the launch of a District Assessment System Design toolkit with Bloomfield Hills Schools and Novi Community School District. This toolkit helped school leaders



reflect critically on their existing assessment systems. These districts continue to use the experiences from the DASD launch to engage their school community in conversation to improve assessment to support teaching and learning.

- In the 2019-20 school year, three Oakland Schools Consultants, along with local community partners, trained and provided support to 11 high schools for the Oakland County Here4U project. This project trains teams of diverse peer educators to develop a year-long campaign for their peers that aims to:
 - Increase awareness of the signs and symptoms of depression and anxiety.
 - Diminish stigma around depression, anxiety and help-seeking behaviors.
 - Connect peers with trusted adults and mental health supports in their community.
- Our Diversity and Equity Consultant Dr. Jay Marks worked with the Hazel Park secondary staff to build capacity toward their goal of a culture that celebrates diversity and promotes equity. Dr. Marks was able to engage with students in order to gain their perspectives and share with staff some student thoughts regarding inclusiveness.

Networking groups for educators

District and School Services supports groups of educators in networking with peers across the county through regularly scheduled facilitated meetings. Networking groups have been designed to meet the needs of central office leaders, principals, district assessment leaders, district ESL leaders, new teachers and content area specialists (mathematics, literacy, social studies, science, fine arts, world language) to name a few. A few examples of the impact of networking groups include:

ESL/Title III Networking Group: Educators from all 28 Oakland County school districts and three Public School Academies met for two, full day, in-person meetings and four, 90 minute virtual meetings, in which they engaged in shared learning and collaborative problem solving in order to do the following:

- Discuss changes to the rules and regulations regarding ESL/Title III Programming, Instruction, and Assessment
- Develop strategic plans for implementing these changes
- Foster alliances between districts to share resources, thinking, and professional learning
- and engage in shared professional learning to ensure high quality educational opportunities for all English Learners.

This powerful collaboration led to programmatic changes, improved practices and positive academic outcomes for the 13,550 English Learners across the LEAs and PSAs in Oakland County.

Oakland County Mathematics Leadership Team (MLT): Educators from 23 Oakland County districts participated in three, full day, in-person sessions and multiple interest-focused virtual sessions after transitioning to remote platforms. Prior to March, sessions focused on:

- increasing leadership capacity of members
- and learning about the formative assessment process: setting learning goals & success criteria, questioning strategies, and activating students as a resource for themselves and their peers

In March, Oakland County MLT members and additional district representatives distributed themselves into four special interest groups (SIGs) informed by district interest and requests for support: Priority Content, Increasing Engagement, Advancing Equity in Mathematics, and Feedback and Assessment. These district representatives worked collaboratively with Oakland Schools' mathematics consultants to:

- identify, organize, and communicate priority mathematics content by grade band.
- explore and communicate online tools and other means to support student engagement in an online learning environment.

- identify and explore resources to support work of advancing equity within the mathematics classroom.
- explore and communicate online tools and other means to provide feedback to students in an online learning environment.

Oakland County Research, Evaluation and Assessment Consortium (OCREAC): Educational Leaders from across the county met monthly to network on best practices on data and assessment, as well as learn updates to state assessment, assessment-related state legislation and Illuminate DnA. Since the Stay-At-Home Order, the priority of this group shifted toward examining the implications for data and assessment in the Governor's various Executive Orders and the MI Safe Schools plan. The focus of the group will now continue to lift up best and emerging practices in data reporting and assessment in a remote learning and working environment. These priorities include

- continuing to support the assessment necessary for supporting Read-by-Grade-3 Legislation.
- data & Assessment related to educator evaluation in a remote working environment.
- remote learning environment specific data collection and reporting.
- research & examination of Learning Management Systems.

Consultation

The District and School Services consultant team works closely with educational leaders across the county as they plan appropriate supports for their district or school. Some outcomes of this consulting work include

- leadership and Team Development.
- continuous Improvement Planning.
- federal and State Programming/Funding Alignment.
- analysis and selection of instructional resources/texts to support curriculum implementation.

Resource development

The District and School Services team is committed to developing resources that support student learning across the state. Some of these resources include:

- Three members of DSS contributed to the development of the MAISA GELN Early Mathematics Essential Instructional Practices: Prekindergarten through Grade 3. This document was released during the school year and has been used within Oakland County and beyond to inform professional learning for pre-kindergarten and early elementary teachers of mathematics.

- mi PLACE (Michigan Professional Learning and Collaboration Environment) is a virtual learning community supported by a team of DSS consultants and project assistants. It functions on a Moodle-based platform integrated with Google apps for education to allow inter and cross district and school collaboration. There are **93** on-demand professional learning courses and **159** collaborative groups.

Advocacy for Oakland County students at the state level

Consultants from the DSS team advocate for children in Oakland County by providing leadership on many statewide groups. Forty percent of DSS consultants serve on state or national teams. A few examples include:

- **Michigan Continuous Improvement Facilitators Network.** Carol Anthony serves as the Chair of this statewide group that provides a venue for continuous improvement facilitators to engage in professional development related to continuous improvement and networking to improve the quality of services that are provided to local districts.
- **National Association of English Language Program Administrators (NAELPA).** Suzanne Toohey serves as an LEA Member-at-Large. NAELPA is organized for the mutual communications, professional development of its members, and support for English Learner students (ELs) regarding the education and services for ELs.
- **Michigan Association of Intermediate School Administrators (MAISA) General Education Leadership Network (GELN) Early Mathematics Task Force (EMTF).** Dana Gosen serves as co-chair of this collaborative statewide group that provides input and develops materials, resources and support for early mathematics teaching and learning.

Consortium pricing and other cost savings

The District and School Services team works closely with districts to provide cost savings whenever possible. DSS staff routinely collect perspectives from school stakeholders and leaders to determine needs, as well as seek input on resources, tools and providers districts recommend. Our staff of experts then assemble product information across the marketplace, and, when feasible, vets solutions for quality. We then negotiate with providers to seek discounted consortium pricing, saving districts thousands of dollars in product pricing and implementation support. A few examples include:

- 24 districts implemented the Atlas Curriculum Mapping System. Oakland Schools negotiated a price of **\$1.50** per student for Atlas Rubicon, a savings of **\$2.50** off the regular pricing. With the Oakland Schools subsidy of **\$.75** per student, we saved districts **\$3.25** per student for a total savings of **\$682,500** across the county.
- 30 districts have signed on to the Oakland Illuminate DnA Consortium pricing and subsidy program. Since the Stay-At-Home order, Oakland Schools has increased support to pay for the full base cost of Illuminate DnA, saving districts over **\$720,000**.
- In addition to the direct cost savings for Illuminate DnA, Oakland Schools served as the first line of technical support, consultation and professional learning which saved districts an undetermined amount of time and money.
- Oakland Schools subsidized the cost of the STAMP proficiency assessment for world language test-out as well as for the newly implemented Seal of Biliteracy at a savings of **\$1,225.00** to districts. This subsidy saved districts **\$5.00** for each assessment administered. Assessments in Arabic, French, German, Hindi, Japanese, Korean, Polish, Portuguese, Russian, and Spanish were given in 11 of the Oakland County school districts. We tested **245 students**.
- Early Childhood purchased the online Child Observation Record (COR) Advantage comprehensive assessment system for preschools and infant/toddler childcare programs across the county at a reduced price of **\$8.95** per child. This is a **\$12** discount or **57% savings** off the **\$20.95** per child individual district or program price. Approximately **6,643** online licenses were purchased at a savings of **\$79,716** overall to districts and programs.

Literacy Essentials Oakland (LEO)

The Literacy Essentials Oakland (LEO) Project is centered on ensuring early literacy success for children in Oakland County. This five-year project was launched during the 2019-20 school year, and was developed with the following criteria in mind:

- Deeply rooted in research
- Builds capacity in districts
- Tailored to needs of districts
- Focus on job-embedded professional learning

This year, the Oakland Schools LEO team worked with district stakeholders in all 28 Oakland County districts to develop personalized in-district road maps that meet the needs of administrators, literacy coaches, teachers, students and families in each district. An in-residence coaching program planned for the 2020-21 school year will support districts in developing and/or refining their own coaching structure.

A variety of Instructional Services efforts saved Oakland County districts

\$1,483,441

Supporting districts with CSI schools

Districts with Comprehensive Support and Improvement (CSI) Schools receive support services from the MDE through its partner Intermediate School Districts and Education Service Agencies to build capacity in order to increase student achievement and/or graduation rates. The Regional Assistance Grants (RAG) are awarded to Intermediate School Districts with CSI Schools under their jurisdiction in order to provide services that support the building of districtwide systems. In 2019-20, the grant supported 13 districts with one traditional high school, eight alternative education high schools, three public school academies and one virtual public school academy. A primary focus of the grant in 2019-2020 was establishing systems that support literacy which included pop-up literacy programs, summer camps and classroom libraries.

Between 16,000 and 17,000 high-interest, diverse books were delivered this past year; approximately 10 books for each student. This enabled districts to provide fully functioning classroom libraries, supported by professional learning for educators, to improve instruction and increase students' reading proficiency.

School Nurse Consultant

District and School Services facilitated the creation of an Intergovernmental Agreement with the Oakland County Health Department to co-fund a county school nurse consultant position. This partnership has proven to be invaluable as the districts were confronted with the global pandemic of COVID-19.

COVID-19 Response

The 2019-20 school year was a unique experience in that school buildings in Michigan were forced to close in mid-March due to the COVID-19 global pandemic. The District and School Services Team at Oakland Schools instantly pivoted work to support districts during this challenging time. A few specific outcomes of Educational Services work during the spring of 2020 include:

- **District Leadership COVID-19 Reopening Planning Calendar.** This document was created to guide the district planning process for safely reopening schools following the COVID19 closures.
- **Supporting Well-Being.** Learning opportunities and resources were developed and curated to help meet the variety of well-being needs that students, staff and families may have at this time and in the future.
- **COVID-19 and Well-Being: Evaluating, Measuring, and Assessing Needs.** Provided guidance for districts to consider how to evaluate, measure, and assess well-being within their school communities.

- **Best Practices for Remote Learning.** Professional learning and guidance documents were developed to support educators across the county with our swift move to remote teaching and learning.
- **Student Intervention Toolkit.** This toolkit was developed to support districts, schools and teachers in planning for a spectrum of student intervention and support for those students most at risk of falling behind, in order to reduce the achievement gaps caused and exacerbated by COVID-19.
- **Prioritizing Learning for K-12 English Language Arts and Mathematics.** Several resources were developed to support conversations around prioritization of new learning for K-12 English Language Arts and Mathematics.
- **Curriculum, Instruction, and Assessment Toolkits.** These toolkits have been developed to guide teachers to implement instructional approaches to meet the range of student needs as they return to school next fall, identify assessment ideas that allow students to demonstrate understanding in a variety of ways, assess and provide instruction in the content areas in face-to-face, virtual, and blended classroom environments, and incorporate well-being and SEL/trauma-informed practices into instruction. CIA Toolkits have been created for all grade levels in ELA, fine arts, health, mathematics, science, social studies and world language.
- **Online Modules for Students.** Modules for secondary mathematics have been curated for use by students who were not able to fully participate in remote learning in Spring 2020.
- **Community Engagement.** Tools were developed for engaging with the wider school community during school closures.
- **Collaborative Inquiry Toolkit.** This toolkit was developed to support districts and schools through growing the understanding and implementation of group problem-solving or solution-seeking.
- **Child Care for Essential Workers.** Great Start Collaborative-Oakland, as the state lead for the Michigan Help Me Grow initiative, adapted this system for Essential Workers across the state to request child care and be matched through their resident ISDs to local child care providers.
- **Child Care for Workers as the Economy Re-Opens.** The Care Coordination Team connects parents to child care options throughout the county. The Early Childhood Team provides 890 child care providers in the county with information about new resources, customized assistance and timely forums about how to re-open to meet parent needs for child care.

Support Services

At Oakland Schools, we serve student learning in many ways, some more direct than others. By focusing on cost savings, efficiencies of scale and supporting the technological framework for delivery of instruction and its assessment, Oakland Schools' employees play an important role in maximizing the dollars that go into every Oakland County classroom. Auxiliary Services, Maintenance and Facility Operations (including the Office of Procurement and Contracting), Communication Services, Financial Services, Government Relations and Pupil Services, Human Resources, JobLink Service Center, Legal Affairs and Technology Services support and strengthen the ancillary services essential for the smooth operation of every school.

Oakland Schools Support Services documented **4,926 hours of assistance** to Oakland County school districts.

Districts save money with Support Services

- **The transportation team provided state-mandated safety education to 1,028 bus drivers, mechanics and supervisors, as well as specialized professional development opportunities for 182 mechanics, special education drivers and aides, school bus driver trainers and business office managers.** Support for four different transportation applications including efficiency reviews tailored for and provided to districts in Oakland and 17 other Michigan counties. Transportation provided 1,080 hours of free, new and advanced user training to 133 users both remotely and in the classroom.
- Pupil Accounting audits are conducted twice a year, which includes ongoing reporting to the Michigan Department of Education to ensure compliance. **Together with Truancy services, this department saved local districts \$6,987,627.19**
- **Oakland Schools Shipping and Receiving drove more than 30,919 miles last year,** providing timely pick up and delivery services to all districts in Oakland County.



Support Services Assistance		
	2019-2020	
District	Points of Assistance	Hours of Assistance
Avondale	638	205.50
Berkley	111	73.25
Birmingham	102	77.75
Bloomfield Hills	91	68.00
Brandon	295	126.00
Clarenceville	106	73.25
Clarkston	510	167.00
Clawson	194	101.50
Farmington	283	105.50
Ferndale	601	190.75
Hazel Park	1111	309.00
Holly	536	216.75
Huron Valley	630	198.25
Lake Orion	528	178.25
Lamphere	313	132.25
Madison	282	117.25
Novi	191	88.00
Oak Park	326	109.50
Oxford	711	211.25
Pontiac	2819	790.50
Rochester	476	145.25
Royal Oak	213	85.00
South Lyon	561	136.25
Southfield	566	171.50
Troy	405	130.50
Walled Lake	719	261.75
Waterford	1623	362.00
West Bloomfield	207	94.25
TOTAL	15148	4926.00

Legal Affairs



Services Provided by Legal Affairs 2019-2020

Matter Name	Fiscal Year 2020 Year to Date
District & Community Services	\$16,189.10
Contracts	\$10,796.50
Total	\$26,985.60



A variety of services provided by and through the **Legal Affairs department** saved Oakland County districts legal fees in the amount of

\$26,985

To remind us, and you, of what the intermediate school district is here to do, we use the acronym ISD:

Increase student achievement

Serve diverse needs of schools

Decrease costs/increase efficiencies

Technology and Shared Services

Mission Statement: Technology and Shared Services will be the premier support provider of secured technology and business services for K-12 education in the state of Michigan focusing on innovative opportunities, collaborative solutions, administrative systems, interactive learning solutions and internet initiatives.

Technology and Shared Services works with several districts in Oakland County to provide non-instructional services on a cost recovery basis. Collaborative efforts include:

- Oakland Schools Shared Services currently provides business, human resources, and truancy district services to five districts on a cost recovery basis.
- Oakland Schools Technology Services provides a full range of onsite and centrally-managed technology services to 11 districts in Oakland County. Districts utilizing these services realize increases in operational efficiencies and customer satisfaction while directing savings back to the classroom. In Fiscal Year 2018, two new districts entered into an agreement for Oakland Schools to provide technology services.
- Oakland Schools provides additional cost recovery services to districts on an as needed basis.



District	Business Office District Services	Human Resources District Services	Technology District Services	Truancy District Services
Avondale	X			
Berkley				
Birmingham				
Bloomfield				
Brandon				
Clarenceville	X		X	
Clarkston				
Clawson	X		X	
Farmington			X	
Ferndale			X	
Hazel Park	X			
Holly			X	
Huron Valley				
Lake Orion			X	
Lamphere				
Madison				
Novi			X	
Oak Park				
Oxford				
Pontiac	X	X	X	X
Rochester				
Royal Oak			X	
South Lyon				
Southfield			X	
Troy				
Walled Lake				
Waterford				
West Bloomfield			X	

Shared Services

Districts utilize Oakland Schools Shared Services because of:

- **Oakland Schools' strong reputation and expertise in business/technology**
- **LEA may be unable to attract and employ high-caliber candidates**
- **LEA may only require a part-time employee**
- **LEA may have a high or sudden turnover of personnel**
- **LEA may want (or be forced) to reorganize their department(s)**

Shared Services employees are strong and dynamic, they are experts in their fields and OS encourages their continued professional development in order for our employees to maintain their certification(s) and expand upon their skillset. It is their expertise that LEA's covet and rely upon when they request our services. It is also the LEA's expectation that our employees will easily assimilate into the culture of their district, and build strong relationships with their personnel and vendors.

Districts Save Money With Shared Services

Shared Services will save Districts money by providing stability to their business office with the establishment of processes and procedures that meet best practices. Shared Service employees also have experience in various financings such as: State Aid Notes, Tax Anticipation Notes, Capital Projects and Sinking Funds.



Technology Services

Technology Services provides high-quality systems, solutions and support to Oakland County schools. Highlights from 2019-2020 include:

- **All 28 districts** participated in Illuminate DnA (data analysis).
- Oakland Schools student information system (MISTAR) **supported 28 districts and seven PSAs**.
- ONE - Barracuda SPAM Filtering **blocked over 3 million SPAM emails** each month.
- District staff accessed approximately **1,888 distance learning programs, 5,190 educational programs and down-linked 2,387 videos** using the ONE Network.
- Hosted Moodle for 29 districts, one international academy consortium, one site for CFE campuses and four public school academies (PSAs).
- Moodle services were visited over **710,654 times** and performed over **6,224,647 actions**.

Districts Save Money With Technology Services

- Technical assistance for ONE Network for all districts at no cost provided benefit valued at \$2,200 per district, totaling **\$61,600**.
- Hosted ONE Moodle Learning Management System at no charge for 28 districts, saving **\$79,750**.
- Hosted ONE Follett Library Management System at no charge for 24 districts, saving **\$66,000**.
- Server hosting services provided for 14 districts at a cost savings of **\$3,000** per district, totaling **\$42,000**.
- Long-term on-site technical support for districts at no cost provided benefit valued at **\$339,663**.
- Student Information System (MISTAR) saved **\$56,795** each for 28 districts, totaling **\$1,590,260**.
- Technical assistance for business applications for five districts at no cost provided benefit valued at **\$15,000** per district, totaling **\$45,000**.
- PowerSchool BusinessPLUS Finance and HR applications saved districts. **\$94,376** each for 19 districts, totaling **\$1,793,144**.
- AMS Business, Finance and HR applications saved **\$94,376** each for four districts, totaling **\$377,504**.
- Internet Service Provider (valued in market at **\$45,000** for a 10GB connection) provided for all districts, saving **\$1.26 million**.
- Barracuda SPAM filtering provided for 12 districts at **\$8,000** each, totaling **\$96,000**.
- Illuminate DnA Data Analysis licensing subsidy provided for all districts totaling **\$340,000**.
- Field Services savings 14 districts, saved **\$4.0 million** in resources, contracts and countywide solutions.



Technology Services saved
Oakland County districts

\$10,090,921

Online Application Glossary

AMS – Finance, HR, Procurement and Budgeting application.

Barracuda SPAM Filtering is done for all districts that elect to participate. District email is routed through the Barracuda devices, located at both the primary and secondary head ends, in order to filter all “blacklisted” SPAM, reducing the amount of inappropriate email sent to each district.

Discovery Streaming – Provides engaging, standard-aligned, rich media and interactive digital textbooks to support a digital learning environment.

Follet Library Management – Library management application.

General ASP – Technology-based resume database system used to match applicant qualifications to teaching positions in member districts.

Illuminate DnA – A comprehensive web-based tool that provides the analysis tools to aggregate and disaggregate different types of testing, proficiency and demographic information.

MIPEER (Michigan Partnership for Essential Education Resources) – A nonprofit voluntary organization to provide a framework for the operation, maintenance and utilization and/or the licensing, administration and support of a finance and HR software system to multiple sites in the Oakland County area for educational and related purposes.

MISTAR – Student information system including: scheduling, attendance, food service, grade reporting, parent portal, student portal, etc.

Moodle – Open source software, with no cost for licensing and no contracts. Oakland Schools Moodle hosting is offered to the districts at no cost. Districts do not need to ration Moodle courses, accounts and training, and educators feel empowered to experiment allowing online learning to be inclusive.

MSDS – State of Michigan student data collection system.

Non-Pub – Application is used by non-public schools that educate students living in Oakland County. Oakland LEAs receive reports annually from this system about those students residing within their district boundaries.

ONE – Oakland Network for Education.

Polyplot – Transportation management application.

Qualtrics – Online survey and data management service.

Atlas Rubicon – Curriculum management application.



Online Application Usage

2019-2020 Online Application Usage by District															
District	Business Apps	Student (MISTAR)	ONE	Applicant Tracking	Non-Pub	MSDS	Illuminate DnA	Tech Consulting (long term)	SPAM filtering	Discovery Streaming	Atlas Rubicon	Moodle	Follet Library Mgt	District Hosting	PolyPlot
Avondale School District	X	X	X	X	X	X	X		X	X	X	X	X		X
Berkley School District		X	X	X	X	X	X	X	X	X	X	X	X	X	
School District of the City of Birmingham	X	X	X	X	X	X	X		X	X	X	X	X		
Bloomfield Hills School District	X	X	X	X	X	X	X			X	X	X	X		X
Brandon School District	X	X	X	X	X	X	X			X	X	X	X		X
Clarenceville School District	X	X	X	X	X	X	X	X	X	X	X	X	X	X	X
Clarkston Community Schools		X	X	X	X	X	X			X		X	X		X
School District of the City of Clawson	X	X	X	X	X	X	X	X		X	X	X	X	X	X
Farmington Public School District		X	X	X	X	X	X	X		X	X	X	X	X	X
Ferndale Public Schools	X	X	X	X	X	X	X	X			X	X	X	X	X
School District of the City of Hazel Park	X	X	X	X	X	X	X			X		X			X
Holly Area School District		X	X	X	X	X	X	X	X	X	X	X	X	X	
Huron Valley School District	X	X	X	X	X	X	X			X	X	X	X		X
Lake Orion Community School District	X	X	X		X	X	X	X		X		X	X	X	
The Lamphere Schools	X	X	X	X	X	X	X		X	X	X	X	X		X
Madison District Public Schools	X	X	X	X	X	X	X			X	X	X			X
Novi Community School District	X	X	X	X	X	X	X	X	X	X	X	X	X	X	X
Oak Park School District		X	X	X	X	X	X				X	X	X		X
Oakland Schools	X	X	X	X	X	X	X	X	X	X	X	X	X	X	X
Oakland Schools CFE	X	X	X	X		X	X	X	X	X	X	X	X	X	
Oxford Area Community School District		X	X	X	X	X	X		X	X	X	X	X		X
School District of the City of Pontiac	X	X	X	X	X	X	X	X		X	X	X	X	X	X
Rochester Community Schools	X	X	X		X	X	X		X	X	X	X	X		
School District of the City of Royal Oak	X	X	X	X	X	X	X	X		X	X	X	X	X	X
South Lyon Community Schools		X	X	X	X	X	X			X	X	X	X		
Southfield Public Schools	X	X	X	X	X	X	X	X		X	X	X	X	X	X
Troy School District		X	X		X	X	X			X	X	X	X		
Walled Lake Consolidated School District		X	X	X	X	X	X			X	X	X	X		
Waterford School District	X	X	X	X	X	X	X			X		X	X		X
West Bloomfield School District	X	X	X		X	X	X	X		X	X	X	X	X	

Time Spent on Technical Assistance

Technology Services Hours 7/1/2019 - 6/30/2020												
District	Business Applications	Career Focused Education	District Hosting	Field Services	Illuminate DnA	Medicaid Services	Mi-CH State Initiatives	MISTAR	Moodle	ONE Network	PolyPlot	District Totals
All Districts	8664	163	3	13621	17	96	234	2671	1	18	3	25489
Avondale	258		1				6	331	7	889		1492
Berkley			12	7246	5		18	1903	6			9190
Birmingham	842		1			7			7	9		865
Bloomfield	697						7	783	7	38	2	1533
Brandon	1420						2	325	7		5	1759
Clarenceville	1651			3325			8	229	6			5219
Clarkston						8	1		6	28	2	44
Clawson	1686			4251			42	325	7			6311
Farmington	5		9	1237			43	362	7		4	1666
Ferndale	694		2	7759			26	324	6		3	8813
Hazel Park	2137						8	226	7	58		2436
Holly				4324		11	2		6	7196		11538
Huron Valley	1152					5			7	853	8	2025
Lake Orion	344			15649		8	1		27	7		16036
Lamphere	296		1				25	430	9	6		767
Madison	860			50	1		10	102	6	25		1054
Novi	475		5	15647			7	881	7		3	17024
Oak Park				50			4	126	6	94		280
Oxford						9			7	7	6	30
Pontiac	2536		2	11810			5	781	7		9	15149
Rochester	761		12			5			32	17		826
Royal Oak	528		2	9581			29	509	6		2	10657
South Lyon			4			5			7	35		51
Southfield	793			12403			11	558	6		4	13775
Troy			2			29	1		7	2		41
Walled Lake						13			7	871		891
Waterford	792						8	254	7	3	4	1068
West Bloomfield	522			11153		10	1		6			11692
Project Totals	27110	163	54	118108	23	205	497	11120	234	10155	53	167720

Human Resources

In addition to building and maintaining positive employee relations by supporting the goals, mission and vision of Oakland Schools, **Human Resources supports the work of our local districts through processing certifications and job postings for local districts participating in the Oakland Human Resources Consortium (OHRC).**

Certification Approvals

During the 2019-2020 school year, Oakland Schools processed certification approvals for Oakland County school districts as indicated in the table at right. Temporary approvals are for persons who are attempting school and working toward a certain special education endorsement or approval. Approvals are for school social workers, special education directors or supervisors. They are not an endorsement on a teaching certificate, but rather an approval letter from the Michigan Department of Education.

Oakland Human Resources Consortium

The Oakland Human Resources Consortium (OHRC) is a consortium of Oakland County school districts dedicated to the recruitment, selection, employment and professional growth of quality educators and other school district employees. When candidates submit their applications through the online process, they are entered into the OHRC database and made available to all districts in the Consortium.



Number of Oakland Human Resources Consortium Postings	
District	2019-20
Avondale	103
Berkley	39
Birmingham	132
Bloomfield Hills	136
Brandon	69
Clarenceville	44
Clarkston	127
Clawson	35
Ferndale	99
Hazel Park	158
Holly	42
Huron Valley	204
Lamphere	108
Madison	58
Novi	106
Oakland Schools	67
Oxford	92
Pontiac	178
Royal Oak	105
South Lyon	144
Walled Lake	340
Waterford	271
Total	2657

Production Printing and Graphics

Production Printing and Graphics (PP&G) offers high-quality printing and design at a low price, while remaining dedicated to personalized service and the use of new technology. Services include printing, scanning, design, VHS tape, CD/DVD duplication and free pickup and delivery.

Go to www.OSPrintShop.com for a full list of services as well as online ordering.

This table illustrates the total cost of district usage of low-cost, high-quality print resources provided by PP&G.



Production Printing and Graphics saved districts **\$319,538***

**Oakland Schools pricing is approximately 50% of commercial printing.*

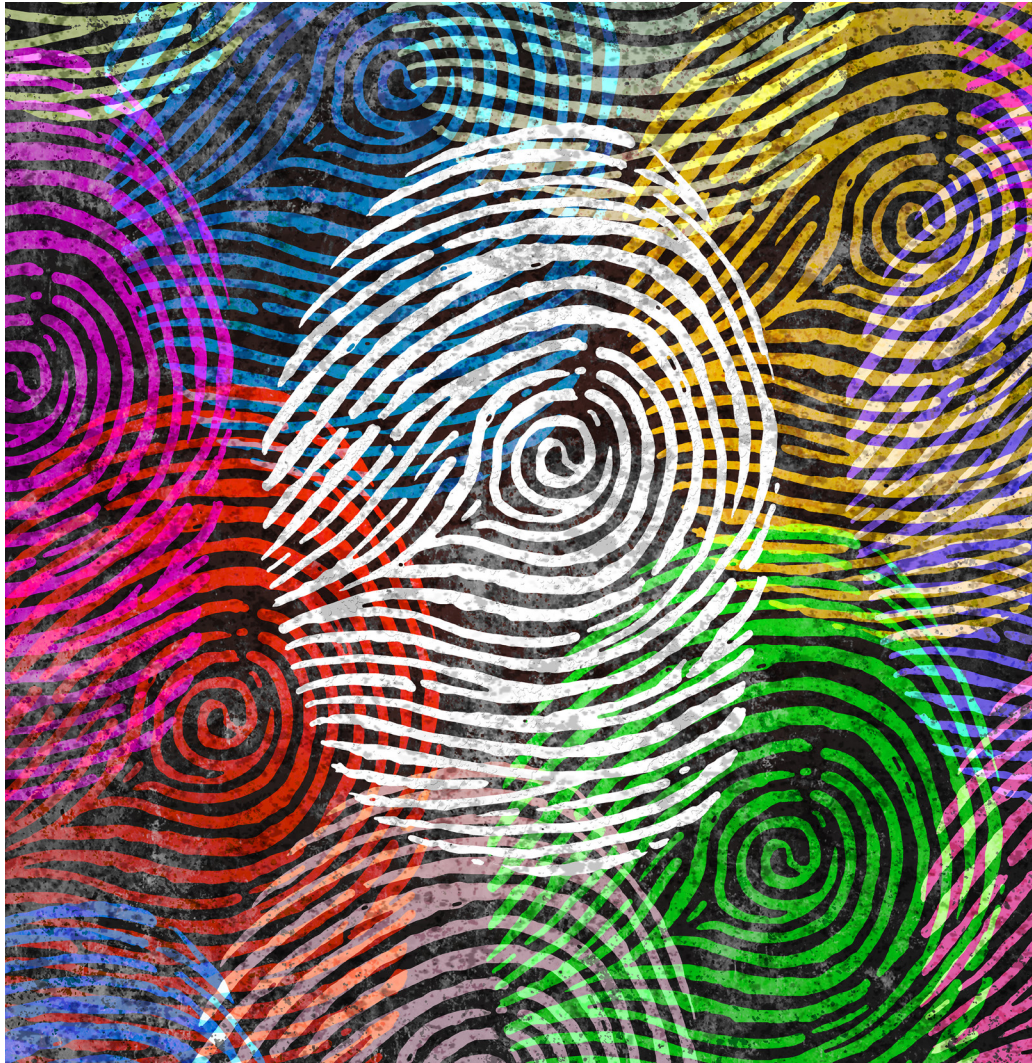


Production Printing and Graphic Services Purchased by Oakland County School Districts				
District	2016-2017	2017-2018	2018-2019	2019-2020
Avondale	\$1,350	\$1,726	\$4,292	\$2,134
Berkley	\$4,795	\$3,348	\$7,718	\$4,027
Birmingham		\$3,982	\$55	\$862
Bloomfield Hills	\$42,880	\$47,338	\$37,081	\$16,387
Brandon	\$1,549	\$1,039	\$3,185	\$679
Clarenceville	\$1,155	\$1,894	\$1,971	
Clarkston	\$768	\$357	\$318	\$681
Clawson	\$13,681	\$21,989	\$21,199	\$19,940
Farmington	\$3,588	\$2,834	\$12,248	\$13,283
Ferndale		\$2,063	\$1,936	\$15,553
Hazel Park		\$534	\$-	\$272
Holly	\$59,622	\$10,635	\$19,833	\$21,035
Huron Valley	\$9,349	\$12,888	\$9,379	\$7,211
Lake Orion	\$2,301	\$567	\$114	\$3,069
Madison	\$6,292	\$10,147	\$7,345	\$5,894
Novi	\$933	\$387	\$540	\$525
Oak Park	\$351	\$1,989	\$5,825	\$6,746
Oxford	\$7,998	\$5,811	\$4,668	\$1,202
Pontiac	\$3,502	\$4,806	\$6,078	\$2,491
Rochester	\$66,728	\$73,006	\$48,943	\$64,176
Royal Oak	\$15,390	\$7,392	\$10,860	\$10,273
South Lyon	\$6,344	\$3,931	\$6,267	\$3,164
Southfield	\$42,178	\$11,428	\$13,237	\$2,651
Lamphere	\$8,037	\$6,723	\$7,037	\$5,786
Troy	\$16,311	\$20,156	\$14,963	\$7,739
Walled Lake	\$4,621	\$5,410	\$12,070	\$1,818
Waterford	\$69,235	\$63,587	\$50,433	\$89,914
West Bloomfield	\$16,624	\$15,725	\$13,370	\$12,026
Total Cost	\$405,579	\$341,691	\$320,965	\$319,538

Fingerprinting

To assist Oakland County school districts in maintaining compliance with the state-mandated School Safety Legislation (2005 PA 129-131 and 138), Oakland Schools and the Oakland Association of School Personnel Administrators (OASPA), established a digital fingerprinting program.

This table shows the number of district staff who have come to Oakland Schools for fingerprinting services.



Number of Staff Fingerprinted at Oakland Schools				
District	FY17	FY18	FY19	FY20
Avondale	12	17	20	9
Berkley	5	10	0	2
Birmingham	30	17	16	3
Bloomfield Hills	84	78	60	40
Brandon School	20	19	10	4
Clarenceville	0	-	0	0
Clarkston	14	32	16	10
Clawson	8	2	2	1
Farmington	4	4	2	1
Ferndale	5	2	0	3
Hazel Park	11	6	3	0
Holly	24	21	6	11
Huron Valley	48	24	16	14
Lake Orion	19	8	6	3
Lamphere	7	4	3	1
Madison	0	3	38	0
Novi	4	3	5	0
Oak Park	0	-	0	0
Oxford	21	35	24	29
Pontiac	69	144	73	80
Rochester	28	19	60	27
Royal Oak	5	7	5	13
South Lyon	2	-	1	0
Southfield	0	-	12	0
Troy	0	3	4	1
Walled Lake	79	86	84	39
Waterford	61	50	25	36
West Bloomfield	9	12	4	4
Total	569	606	495	331

Does not count prints done for teachers through agencies.

Medicaid Services

Oakland Schools processes billings on behalf of Oakland County's 28 local school districts and two public school academies for health services provided in the schools for Medicaid-eligible special education students.

This is a voluntary program provided at no cost to the districts and helps to offset some of the health care costs these students incur. Important components of the program are monitoring and compliance services, which are provided to ensure the qualifications of personnel, medical necessity and outcomes of services provided and accuracy of billing.

The accompanying table illustrates resources provided to all Oakland County school districts as related to the Medicaid School Based Services Program.

The number of participating clinicians may change from month to month, therefore an average number was used under the column "Average Number of Clinicians."

The column "Total Amount Reimbursed to LEAs in FY 2020" indicates the payments issued to the local school districts during fiscal year 2019-20 for the Direct Service Program, which includes direct health services and special education transportation, and for the Administrative Outreach Program totaling **\$13,270,717.80**.

The Medicaid School Based Services reimbursement methodology, which has been in effect since July 2008, is cost-based and reconciles annually. The payments made to the local districts and public school academies were distributed in June 2020 for the 2018-19 school fiscal year in accordance with the reconciliation time frame established by the Michigan Department of Health and Human Services.



Annual District Service Report for the Medicaid Department 2019-2020 School Year								
LEA	Average Number of Clinicians	Medicaid Eligible Students	Direct Service Workshop Participants	Speech Referrals Obtained	OT Prescriptions	"(A) Administrative Outreach Program Approved Amount Per LEA"	"(B) Direct Service and Transportation Approved Amount Per LEA"	Total Amount Reimbursed to LEAs in FY 2020 (A + B)
Avondale School District	50	177	0	34	1	\$ 8,633.95	\$ 181,423.57	\$ 190,057.52
Berkely School District	43	118	0	38	9	\$ 13,733.56	\$ 197,830.60	\$ 211,564.16
Birmingham City School District	93	102	0	3	1	\$ 19,064.94	\$ 427,011.54	\$ 446,076.48
Bloomfield Hills School District	86	111	31	52	8	\$ 35,194.61	\$ 772,676.38	\$ 807,870.99
Bradford Academy	22	137	14	17	3	\$ 1,771.05	\$ 37,418.54	\$ 39,189.59
Brandon School District	26	103	0	40	12	\$ 7,956.67	\$ 81,982.03	\$ 89,938.70
Clarenceville School District	12	100	5	39	16	\$ 4,501.12	\$ 57,676.12	\$ 62,177.24
Clarkston Community School District	196	294	86	115	44	\$ 28,332.34	\$ 609,293.44	\$ 637,625.78
Clawson City School District	50	102	29	31	7	\$ 4,195.76	\$ 147,239.62	\$ 151,435.38
Farmington Public School District	223	265	19	152	49	\$ 35,456.82	\$ 1,000,002.17	\$ 1,035,458.99
Ferndale Public Schools	45	143	0	101	21	\$ 4,616.94	\$ 169,456.73	\$ 174,073.67
Hazel Park City School District	74	282	7	210	91	\$ 16,056.19	\$ 330,348.76	\$ 346,404.95
Holly Area School District	96	165	0	109	18	\$ 11,106.45	\$ 294,501.66	\$ 305,608.11
Huron Valley Schools	216	470	14	195	28	\$ 31,230.01	\$ 548,032.52	\$ 579,262.53
Lake Orion Community Schools	74	248	0	96	10	\$ 28,434.89	\$ 474,959.82	\$ 503,394.71
Lamphere Public Schools	54	150	7	128	36	\$ 5,548.64	\$ 247,197.73	\$ 252,746.37
Madison Public Schools	26	114	0	76	27	\$ 3,610.67	\$ 136,360.69	\$ 139,971.36
Novi Community School District	98	58	4	49	12	\$ 25,215.76	\$ 436,854.20	\$ 462,069.96
Oak Park City School District	40	243	5	210	64	\$ 8,326.08	\$ 228,103.99	\$ 236,430.07
Oakland Schools	N/A	N/A	N/A	N/A	N/A	\$ 16,128.39	\$ -	\$ 16,128.39
Oxford Area Community Schools	58	187	0	40	4	\$ 20,703.83	\$ 162,466.22	\$ 183,170.05
Pontiac Academy For Excellence	13	92	3	18	5	\$ 2,039.87	\$ 26,580.25	\$ 28,620.12
Pontiac City School District	143	639	26	403	162	\$ 13,241.65	\$ 349,076.65	\$ 362,318.30
Rochester Community School District	327	349	13	204	8	\$ 67,445.53	\$ 1,337,703.54	\$ 1,405,149.07
School District of the City of Royal Oak	54	159	35	94	41	\$ 24,430.31	\$ 370,652.98	\$ 395,083.29
South Lyon Community Schools	87	291	12	165	47	\$ 25,513.36	\$ 499,778.50	\$ 525,291.86
Southfield Public School District	158	411	15	147	69	\$ 38,806.60	\$ 849,734.50	\$ 888,541.10
Troy School District	120	264	19	85	10	\$ 29,867.93	\$ 581,509.89	\$ 611,377.82
Walled Lake Consolidated Schools	156	345	11	20	0	\$ 50,120.69	\$ 759,219.22	\$ 809,339.91
Waterford School District	163	636	20	291	85	\$ 37,847.56	\$ 766,506.07	\$ 804,353.63
West Bloomfield School District	88	210	14	42	0	\$ 26,794.01	\$ 543,193.69	\$ 569,987.70
Totals	2,891	6,965	389	3,204	888	\$ 645,926.18	\$12,624,791.62	\$ 13,270,717.80

**Note: The number of participating clinicians may change from month to month, therefore an average number was used.
Totals are from 2018-19 paid out in 2019-20 SY*

Michigan Green Schools

Increasing numbers of Oakland County schools have achieved Michigan Green Schools status. To be designated a Michigan Green School, K-12 schools must successfully undertake a minimum of 10 out of 20 activities prescribed by state law and submit an application. Ninety-nine schools received the special designation of Evergreen Schools by successfully earning points for extra activities. Thirty schools received Emerald status and 24 schools received the Green Schools designation. Twenty-four Oakland County districts, all four Oakland Schools Technical Campuses and 28 nonpublic schools across the county participated.

The Michigan Green Schools program began as a grassroots initiative in Livingston County in 2005. This effort resulted in Gov. Jennifer Granholm signing Public Act 146 into law in May 2006. Schools earning the Michigan Green Schools designation received an official Michigan Green Schools flag, a certificate signed by the Oakland County Executive and the Superintendent of Oakland Schools.



District	School Name	Designation
Avondale	Auburn Elementary	Emerald
Avondale	Deerfield Elementary	Green
Avondale	Woodland Elementary	Green
Berkley	Angell Elementary	Evergreen
Berkley	Pattengill Elementary	Evergreen
Berkley	Rogers Elementary	Evergreen
Birmingham	Berkshire Middle School	Evergreen
Birmingham	Beverly Elementary	Evergreen
Birmingham	Birmingham Covington School	Evergreen
Birmingham	Greenfield Elementary	Evergreen
Birmingham	Harlan Elementary	Evergreen
Birmingham	Pembroke Elementary	Evergreen
Birmingham	Pierce Elementary	Evergreen
Birmingham	Seaholm High School	Evergreen
Birmingham	West Maple Elementary	Evergreen
Birmingham	Wylie E. Groves High School	Evergreen
Birmingham	Lincoln Street Alternative High School	Green
Bloomfield Hills	Eastover Elementary	Evergreen
Bloomfield Hills	Lone Pine Elementary	Evergreen
Clarenceville	Botsford Elementary	Evergreen
Clarenceville	Grandview Elementary	Evergreen
Bloomfield Hills	Lone Pine Elementary	Evergreen
Bloomfield Hills	Bloomfield Hills High School	Emerald
Bloomfield Hills	Way Elementary	Evergreen
Bloomfield Hills	East Hills Middle School	Green
Clarenceville	Botsford Elementary	Evergreen
Clarenceville	Grandview Elementary	Evergreen

District	School Name	Designation
Clawson	Paul A. Schalm Elementary	Evergreen
Clawson	Kenwood Elementary	Emerald
Clawson	Clawson High School	Green
Farmington	Farmington STEAM Academy	Evergreen
Farmington	Forest Elementary	Evergreen
Farmington	Gill Elementary	Evergreen
Farmington	Hillside Elementary	Evergreen
Farmington	North Farmington High School	Evergreen
Farmington	Warner Middle School	Evergreen
Farmington	Beechview Elementary	Emerald
Farmington	Wood Creek Elementary	Emerald
Farmington	East Middle School	Green
Ferndale	Ferndale Upper Elementary	Evergreen
Ferndale	Ferndale High School	Emerald
Ferndale	Ferndale Middle School	Green
Hazel Park	Webb Elementary	Evergreen
Holly	Holly Middle School	Evergreen
Huron Valley	Oxbow Elementary	Evergreen
Huron Valley	White Lake Middle School	Evergreen
Huron Valley	Lakeland High School	Emerald
Huron Valley	Milford High School	Emerald
Huron Valley	Muir Middle School	Green
Huron Valley	White Lake Middle School	Evergreen
Huron Valley	Oak Valley Middle School	Evergreen
Huron Valley	Lakeland High School	Emerald
Huron Valley	Lakewood Elementary	Evergreen
Huron Valley	Kurtz Elementary	Green

Michigan Green Schools

District	School Name	Designation
Lake Orion	Paint Creek Elementary	Evergreen
Lake Orion	Orion Oaks Elementary	Emerald
Lake Orion	Scripps Middle School	Emerald
Novi	Village Oaks Elementary	Emerald
Oakland Schools	Oakland Schools Technical Campus Northeast	Emerald
Oakland Schools	Oakland Schools Technical Campus Southeast	Green
Oxford	Clear Lake Elementary	Evergreen
Oxford	Daniel Axford Elementary	Evergreen
Oxford	Lakeville Elementary	Evergreen
Oxford	Oxford Elementary	Green
Private	Building Blocks Preschool	Evergreen
Private	Discover Preschool	Evergreen
Private	Four Corners Montessori Academy	Evergreen
Private	Guardian Angels Catholic School	Evergreen
Private	Holly Academy	Evergreen
Private	Japhet School	Evergreen
Private	Milford Cooperative Preschool	Evergreen
Private	Notre Dame Preparatory School and Marist Academy Lower School	Evergreen
Private	Our Lady of Sorrows	Evergreen
Private	Our Shepherd Lutheran	Evergreen
Private	Shrine Catholic Grade School	Evergreen
Private	St. Hugo of the Hills	Evergreen
Private	St. Mary Catholic School	Evergreen
Private/Other	Notre Dame Preparatory School and Marist Academy Lower Division	Evergreen
Private/Other	Kingsbury Country Day School	Green
Private/Other	Four Corners Montessori Academy	Evergreen
Private/Other	Japhet School	Evergreen
Private/Other	Holy Family Regional School- North Campus (Y5-Grade 3)	Green
Private/Other	Shrine Catholic Grade School	Evergreen

District	School Name	Designation
Private	The Roeper Lower School	Evergreen
Private	Brookfield Academy - Troy	Emerald
Private	Cranbrook Brookside	Emerald
Private	Marian High School	Emerald
Private	Detroit Country Day School	Green
Private	Holy Family Regional School	Green
Private	Holy Family Regional School North Campus	Green
Private	Kingsbury Country Day School	Green
Private	Notre Dame Preparatory School and Marist Academy	Green
Rochester	Baldwin Elementary	Evergreen
Rochester	Brewster Elementary	Evergreen
Rochester	Brooklands Elementary	Evergreen
Rochester	Delta Kelly Elementary	Evergreen
Rochester	Hampton Elementary	Evergreen
Rochester	Hart Middle School	Evergreen
Rochester	Hugger Elementary	Evergreen
Rochester	Long Meadow Elementary	Evergreen
Rochester	McGregor Elementary	Evergreen
Rochester	Meadow Brook Elementary	Evergreen
Rochester	Musson Elementary	Evergreen
Rochester	Rochester Adams High School	Evergreen
Rochester	Rochester High School	Evergreen
Rochester	Stoney Creek High School	Evergreen
Rochester	University Hills Elementary	Evergreen
Rochester	Van Hoosen Middle School	Evergreen
Rochester	West Middle School	Evergreen
Rochester	ACE High School	Emerald
Rochester	North Hill Elementary	Emerald
Royal Oak	Addams Elementary	Evergreen
Royal Oak	Keller Elementary	Evergreen

District	School Name	Designation
Royal Oak	Oak Ridge Elementary	Evergreen
Royal Oak	Oakland Elementary	Evergreen
Royal Oak	Upton Elementary	Evergreen
Royal Oak	Royal Oak High School	Emerald
Royal Oak	Royal Oak Middle School	Green
South Lyon	Salem Elementary	Evergreen
Southfield	Thompson International Academy	Emerald
Troy	Barnard Elementary	Evergreen
Troy	Costello Elementary	Evergreen
Troy	Hill Elementary	Evergreen
Troy	Larson Middle School	Evergreen
Troy	Troy Athens High School	Evergreen
Troy	Troy High School	Evergreen
Troy	Wass Elementary	Evergreen
Troy	Baker Middle School	Emerald
Troy	Leonard Elementary	Emerald
Walled Lake	Hickory Woods Elementary	Evergreen
Walled Lake	Keith Elementary	Evergreen
Walled Lake	Walled Lake Western High School	Evergreen
Walled Lake	Sarah Banks Middle School	Emerald
Walled Lake	Walled Lake Northern High School	Emerald
Walled Lake	Oakley Park Elementary	Green
Walled Lake	Pleasant Lake Elementary	Green
West Bloomfield	Gretchko Elementary	Evergreen
West Bloomfield	Scotch Elementary	Evergreen
Private/Other	Four Corners Montessori Academy	Evergreen
Private/Other	Japhet School	Evergreen
Private/Other	Holy Family Regional School- North Campus (Y5-Grade 3)	Green
Private/Other	Shrine Catholic Grade School	Evergreen

100

[illegible]

Digital Access

Want to access the most up-to-date
copy of the District Service Report?

Scan the QR code below or visit
bit.ly/os-dsr, then select "publications" to
download a digital version.



OaklandSchools

Communication Services
2111 Pontiac Lake Rd.
Waterford, MI 48328
www.oakland.k12.mi.us
248.209.2145